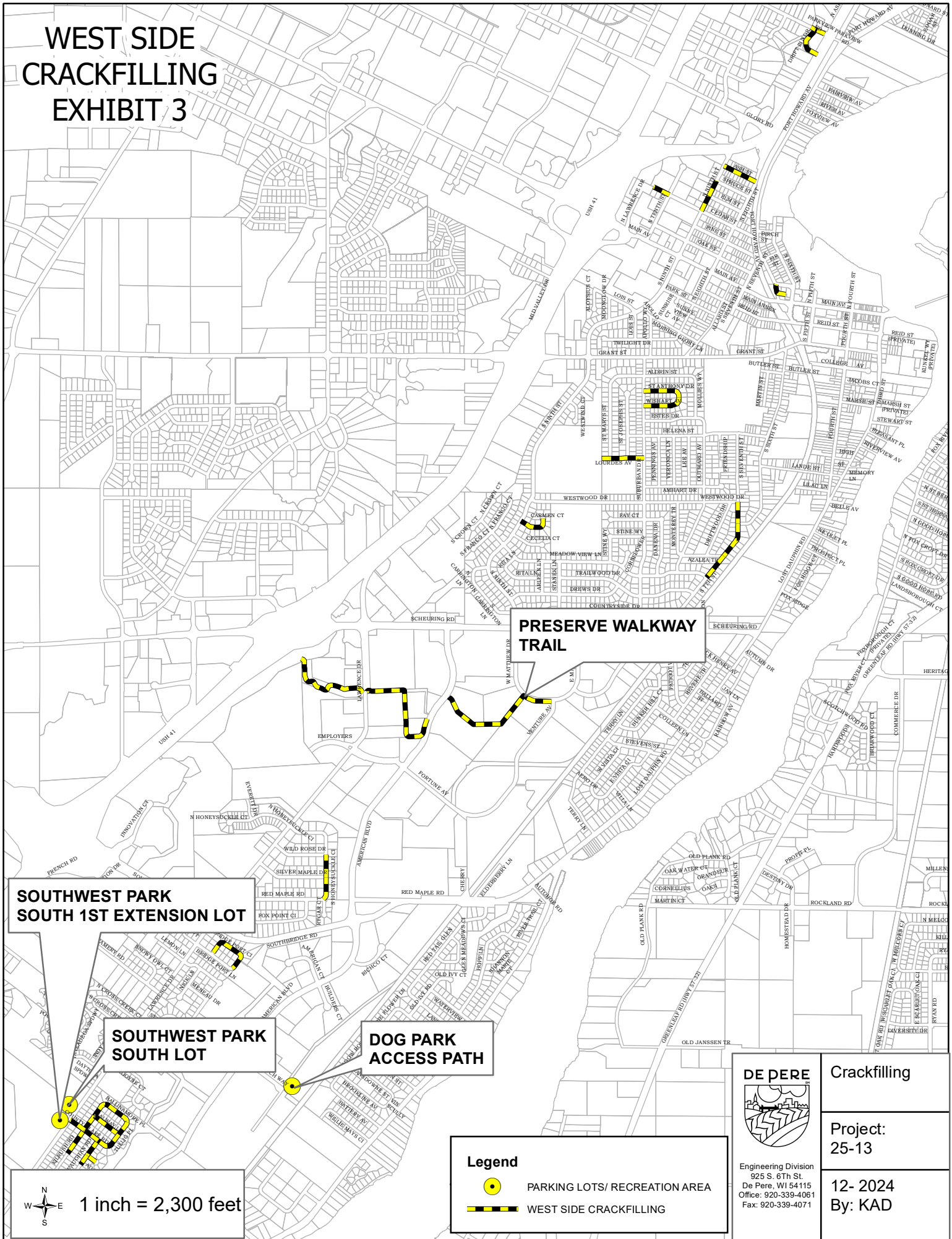


WEST SIDE CRACKFILLING EXHIBIT 3





PRESERVE WALKWAY TRAIL

**SOUTHWEST PARK
SOUTH 1ST EXTENSION LOT**

**SOUTHWEST PARK
SOUTH LOT**

**DOG PARK
ACCESS PATH**

Legend

-  PARKING LOTS/ RECREATION AREA
-  WEST SIDE CRACKFILLING

DE PERE



Crackfilling

**Project:
25-13**

Engineering Division
925 S. 6th St.
De Pere, WI 54115
Office: 920-339-4061
Fax: 920-339-4071

**12- 2024
By: KAD**