

Legend



Firearm Discharge Prohibited

8-2. - Loading and discharge of weapons. (2)

(b) Bow and arrow or crossbow hunting

(1) It shall be unlawful for purposes of hunting to discharge a bow and arrow or crossbow within a distance of 100 yards from a building located on another person's land. This restriction shall not apply if the person who owns the land on which the building is located allows and gives written permission to the person to use or discharge an arrow or bolt with a bow and arrow or crossbow within the specified distance of the building.

Any person who discharges a bow and arrow or crossbow shall discharge the arrow or bolt toward the ground. The term "building" shall be as defined in Wis. Stats. § 29.038.

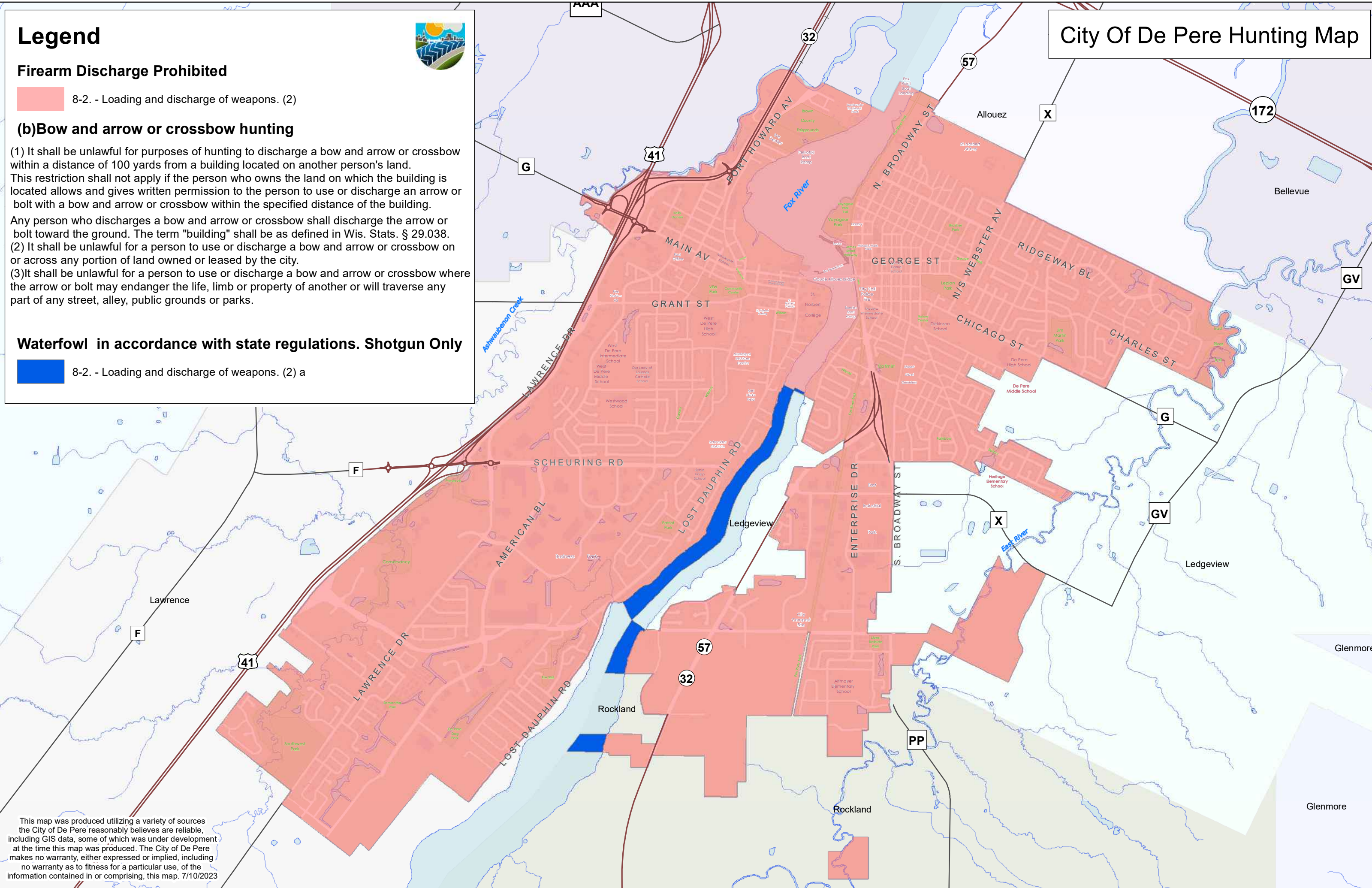
(2) It shall be unlawful for a person to use or discharge a bow and arrow or crossbow on or across any portion of land owned or leased by the city.

(3) It shall be unlawful for a person to use or discharge a bow and arrow or crossbow where the arrow or bolt may endanger the life, limb or property of another or will traverse any part of any street, alley, public grounds or parks.

Waterfowl in accordance with state regulations. Shotgun Only

8-2. - Loading and discharge of weapons. (2) a

City Of De Pere Hunting Map



This map was produced utilizing a variety of sources the City of De Pere reasonably believes are reliable, including GIS data, some of which was under development at the time this map was produced. The City of De Pere makes no warranty, either expressed or implied, including no warranty as to fitness for a particular use, of the information contained in or comprising, this map. 7/10/2023