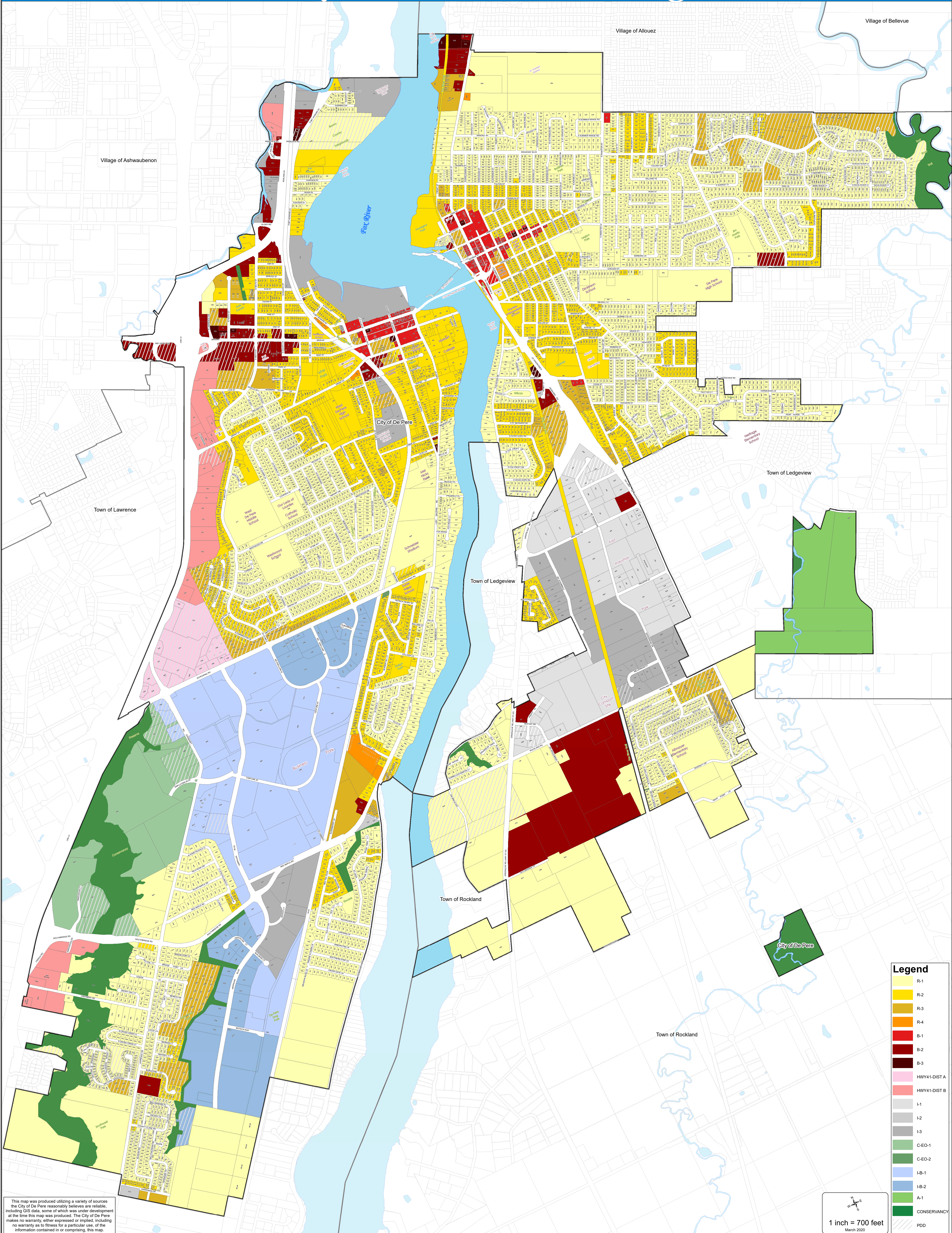




# City of De Pere - Zoning

DE PERE



**Legend**

[Yellow]	R-1
[Light Yellow]	R-2
[Orange]	R-3
[Dark Orange]	R-4
[Red]	B-1
[Dark Red]	B-2
[Dark Red]	B-3
[Pink]	HWY41-DIST A
[Light Pink]	HWY41-DIST B
[Light Grey]	I-1
[Medium Grey]	I-2
[Dark Grey]	I-3
[Light Green]	C-E0-1
[Medium Green]	C-E0-2
[Light Blue]	I-B-1
[Medium Blue]	I-B-2
[Green]	A-1
[Dark Green]	CONSERVANCY
[White]	PDD

This map was produced utilizing a variety of sources the City of De Pere reasonably believes are reliable, including GIS data, some of which was under development at the time this map was produced. The City of De Pere makes no warranty, either expressed or implied, including no warranty as to fitness for a particular use, of the information contained in or comprising, this map.

1 inch = 700 feet  
March 2020