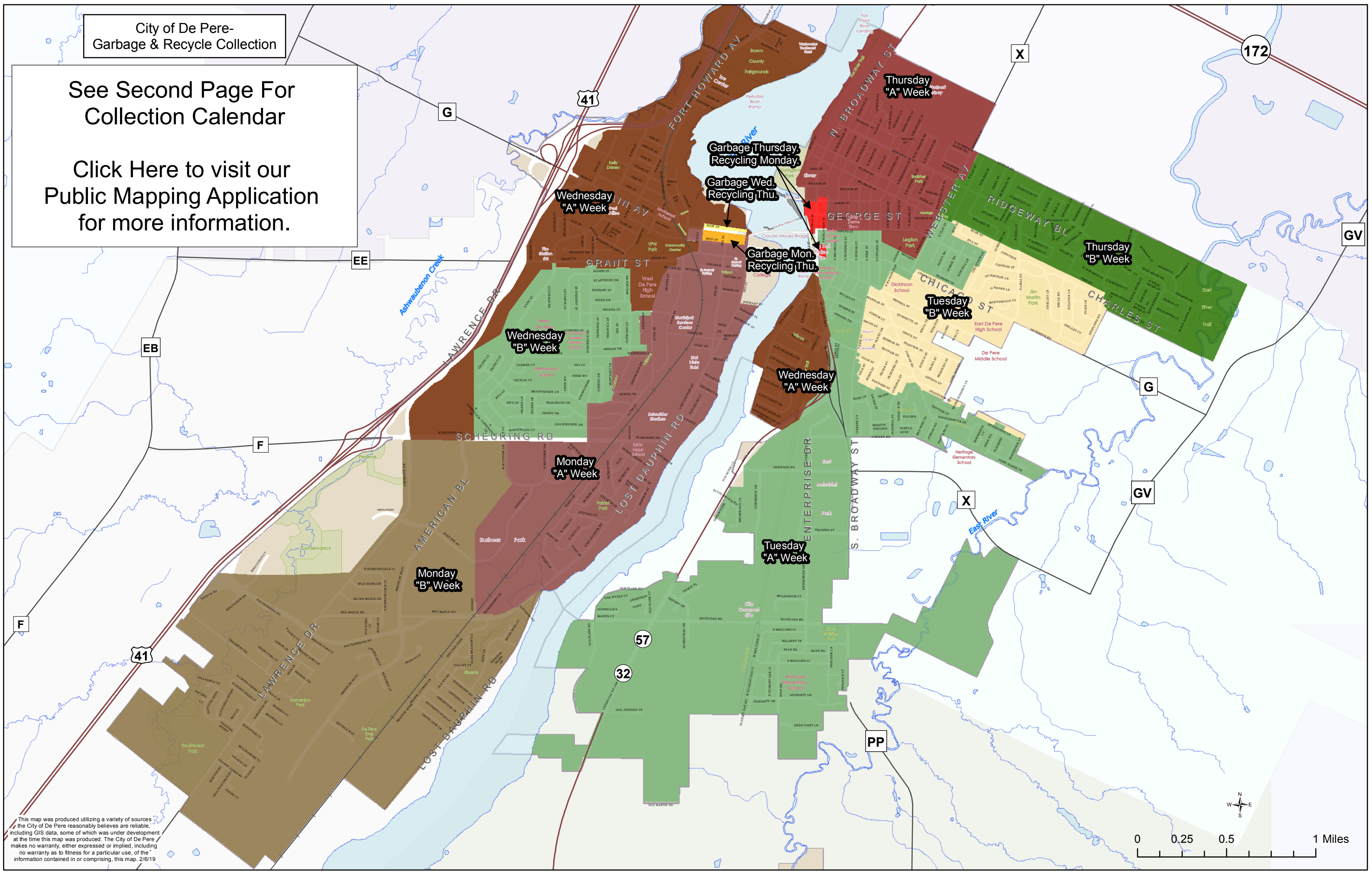


City of De Pere-
Garbage & Recycle Collection

See Second Page For
Collection Calendar

Click Here to visit our
Public Mapping Application
for more information.



This map was produced utilizing a variety of sources including GIS data, some of which was under development at the time this map was produced. The City of De Pere makes no warranty, either expressed or implied, including no warranty as to fitness for a particular use, of the information contained in or comprising, this map. 2/6/19

2019 CITY OF DE PERE - "BAGGED" GARBAGE & "BOXED" RECYCLING OVERFLOW CALENDAR

OVERFLOW IS DEFINED AS - "BAGGED" HOUSEHOLD GARBAGE OR "BOXED" RECYCLING THAT WOULD NORMALLY BE DISPOSED OF IN YOUR GREEN GARBAGE OR BLUE RECYCLING CONTAINER

JANUARY							FEBRUARY							MARCH									
S	M	T	W	TH	F	S	S	M	T	W	TH	F	S	S	M	T	W	TH	F	S			
Week A		1 Holiday	X	X	X	5	Week A					1	2	Week A						1	2		
Week B	X	8	9	10	11	12	Week B	4	5	6	7	8	9	Week B	4	5	6	7	8	9			
Week A	13	14	15	16	17	18	19	Week A	10	11	12	13	14	15	16	Week A	10	11	12	13	14	15	16
Week B	20	21	22	23	24	25	26	Week B	17	18	19	20	21	22	23	Week B	17	18	19	20	21	22	23
Week A	27	28	29	30	31			Week A	24	25	26	27	28			Week A	24	25	26	27	28	29	30
																Week B	31						
APRIL							MAY							JUNE									
S	M	T	W	TH	F	S	S	M	T	W	TH	F	S	S	M	T	W	TH	F	S			
Week B	1	2	3	4	5	6	Week B			1	2	3	4	Week B						1			
Week A	7	8	9	10	11	12	13	Week A	5	6	7	8	9	10	11	Week A	2	3	4	5	6	7	8
Week B	14	15	16	17	18	19	20	Week B	12	13	14	15	16	17	18	Week B	9	10	11	12	13	14	15
Week A	21	22	23	24	25	26	27	Week A	19	20	21	22	23	24	25	Week A	16	17	18	19	20	21	22
Week B	28	29	30					Week B	26	27 Holiday	X	X	X	X		Week B	23	24	25	26	27	28	29
Spring Leaf Collection - April 8 - April 19														Week A	30								
JULY							AUGUST							SEPTEMBER									
S	M	T	W	TH	F	S	Week	M	T	W	TH	F	S	S	M	T	W	TH	F	S			
Week A	1	2	3	4 Holiday	X	6	Week A				1	2	3	Week A									
Week B	X	X	X	X	11	12	13	Week B	4	5	6	7	8	9	10	Week B	1 Holiday	X	X	X	X	7	
Week A	14	15	16	17	18	19	20	Week A	11	12	13	14	15	16	17	Week A	8	9	10	11	12	13	14
Week B	21	22	23	24	25	26	27	Week B	18	19	20	21	22	23	24	Week B	15	16	17	18	19	20	21
Week A	28	29	30	31				Week A	25	26	27	28	29	30	31	Week A	22	23	24	25	26	27	28
Week B															Week B	29	30						
OCTOBER							NOVEMBER							DECEMBER									
S	M	T	W	TH	F	S	S	M	T	W	TH	F	S	S	M	T	W	TH	F	S			
Week B		1	2	3	4	5	Week B					1	2	Week B									
Week A	6	7	8	9	10	11	12	Week A	3	4	5	6	7	8	9	Week A	1	X	X	X	5	6	7
Week B	13	14	15	16	17	18	19	Week B	10	11	12	13	14	15	16	Week B	8	9	10	11	12	13	14
Week A	20	21	22	23	24	25	26	Week A	17	18	19	20	21	22	23	Week A	15	16	17	18	19	20	21
Week B	27	28	29	30	31			Week B	24	25	26	27	Holiday 28	X	30	Week B	22	23	24	25 Holiday	X	X	28
Fall Leaf Collection - October 14 - November 15							Fall Leaf Collection - October 14 - November 15							Week A	29	X	X						

KEY:

- = Recycling Week A
- = Recycling Week B
- = Free Overflow Collection Days

Holiday = When Holiday appears on the calendar, garbage & recycling is delayed one (1) day for the remainder of the week.

Spring/Fall Leaf Collection = Grass clippings, lawn rakings, small garden waste & leaves. No bagged leaves, brush or tree trimmings will be picked up during leaf collection.