

# CITY OF DE PERE

## Public Works - Engineering Department

925 S. Sixth Street, De Pere, WI 54115 | 920-339-4061 | [www.de-pere.org](http://www.de-pere.org)

May 30, 2023



ADDENDUM NO. 1  
PROJECT 23-16  
BRIDGE REHABILITATION

TO: Prospective Bidders

FROM: City of De Pere

Notice is hereby given that the contract documents for Project 23-16 are amended as hereinafter set forth. If you will be submitting a bid for Project 23-16, you must sign this addendum and include it with your submittal.

This addendum consists of 2 pages.

CHANGES TO SUPPLEMENTAL SPECIAL PROVISIONS:

1. Appendix A, Page 4 of the plan details, delete the "Wingwall Banding Detail" and insert the attached "Wing Strapping" detail from the Wisconsin Department of Transportation as the fifth page in Appendix A.

Sincerely,

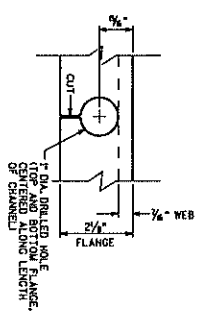
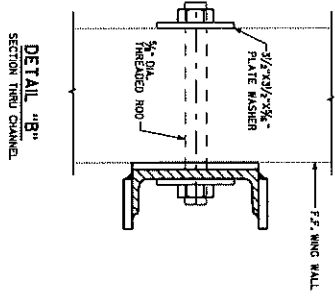
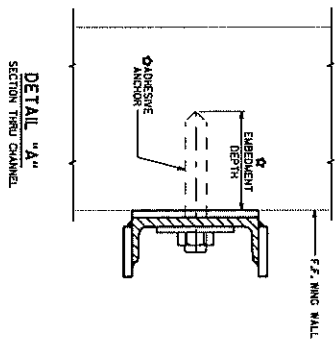
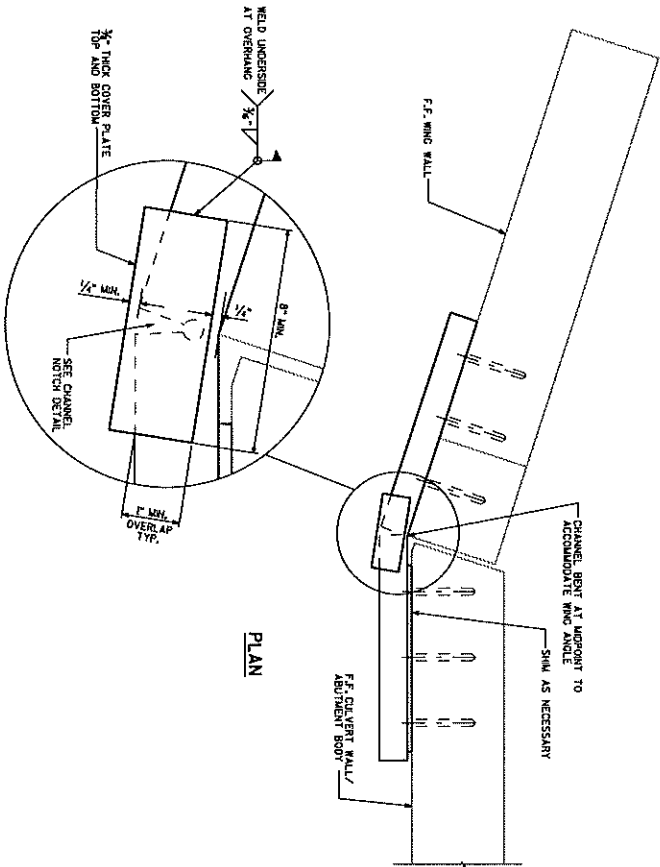
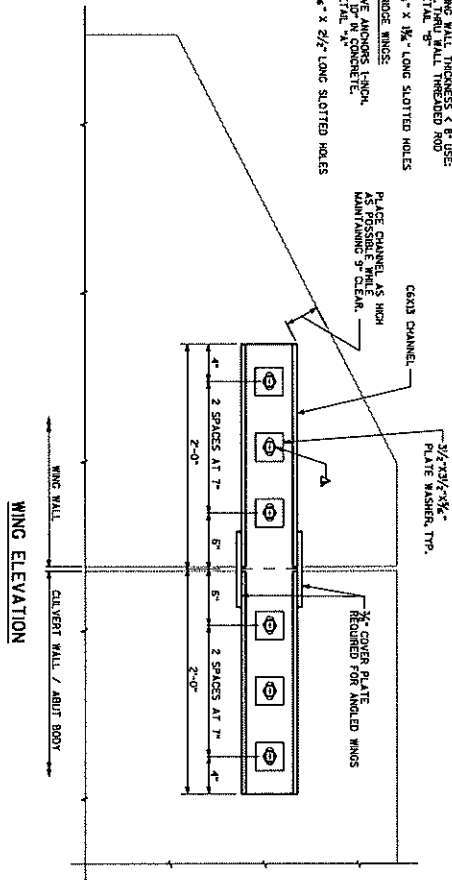
DEPARTMENT OF PUBLIC WORKS

Eric P. Rakers, P.E.  
City Engineer



Acknowledged by: \_\_\_\_\_ Date: \_\_\_\_\_

FOR CLVERT WINGS:  
WITH WING WALL THICKNESS 2' USE:  
ADHESIVE AMONGS 3/4" INCH  
SEE DETAIL "A"  
WITH WING WALL THICKNESS 4' USE:  
ADHESIVE AMONGS 1" INCH  
SEE DETAIL "B"  
USE 1/2" x 3/4" LONG SLOTTED HOLES  
FOR BRIDGE WINGS:  
ADHESIVE AMONGS 1" INCH  
SEE DETAIL "A"  
USE 1/2" x 2 1/2" LONG SLOTTED HOLES



**NOTES**  
WING STRAPPING DETAIL FOR THE PURPOSE OF LATERAL INWARD OR WING REINFORCEMENT AT TERMINAL TO THE PROVIDED METHOD OF WING REINFORCEMENT.  
NO JUDY SHALL BE "STRAPPING 8-XX-XX" WHICH INCLUDES ALL ITEMS SHOWN.  
ALL PROVIDED STEEL MATERIAL SHALL CONFORM TO ASTM A36.  
ALL STRUCTURAL STEEL SHOWN SHALL BE GALVANIZED, THERMOPLASTIC COATED OR GALVANNEAL.  
CUTTING AND DRILLING OF CHANNEL SHALL BE DONE IN FABRICATION SHOP PRIOR TO GALVANIZING.  
IF WELDING COVER PLATE IN FIELD PRIOR TO WELDING BRIDGE GALVANIZING FROM AREA TO BE WELDED, TOUCH UP WITH PAINT ALL AREAS LACKING GALVANIZING WHEN COMPLETE.  
CALCULATE AROUND PERIMETER OF CHANNEL AND FILL PORTION OF HOLE AROUND ANCHOR BOLT AND SHIM WITH NON-STAINING GRAY NON-BRANDED SPACKLING.  
ADHESIVE AMONGS SHALL CONFORM TO SECTION 502.212 OF THE STANDARD SPECIFICATIONS.

CHANNEL NOTCH DETAIL  
FOR USE WITH ANGLED WINGS ONLY

WING STRAPPING



APPROVED: *Bill Oliva* DATE: 7-18