



City of De Pere West Business Park: Available Lots

Legend

Lot Price*

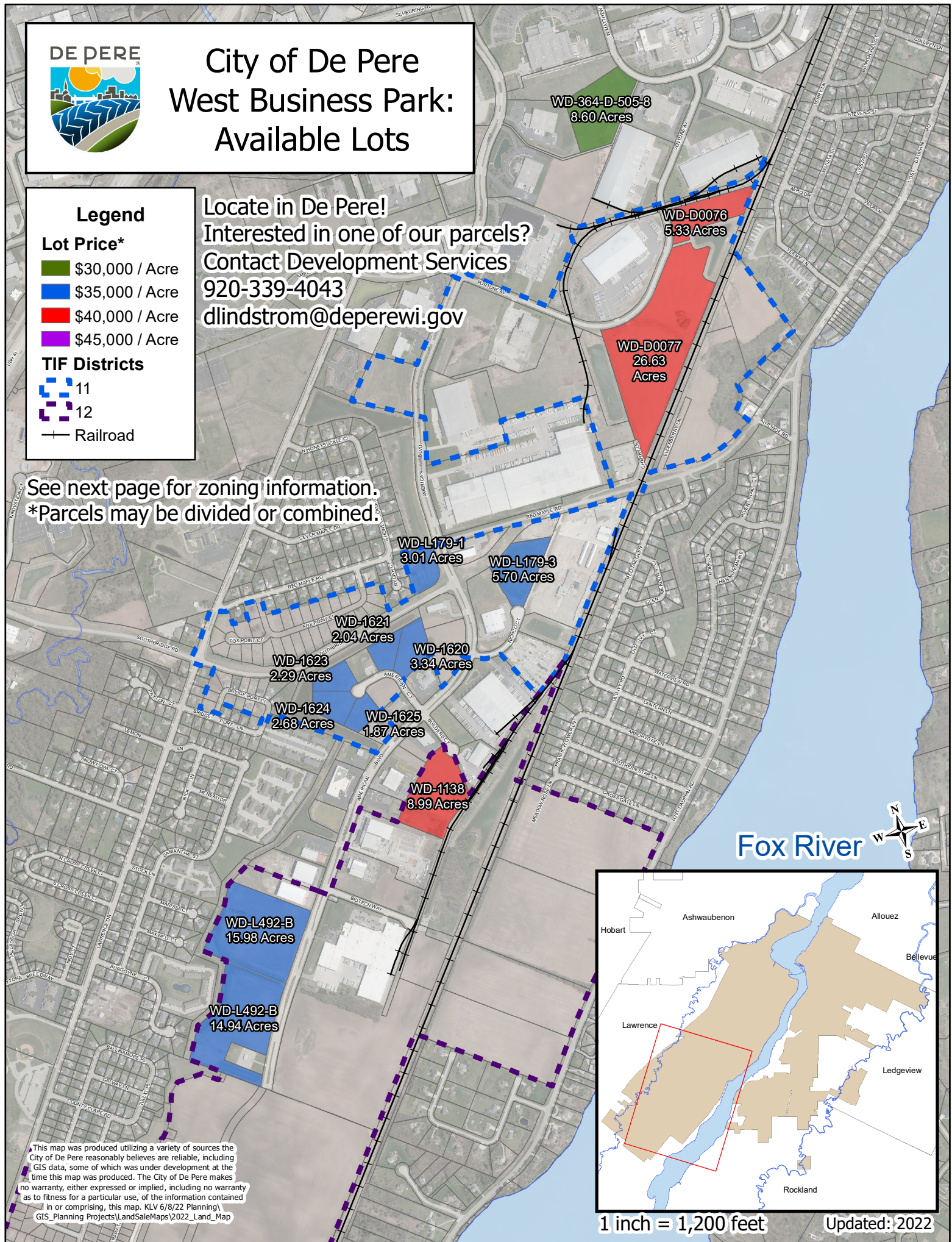
- \$30,000 / Acre
- \$35,000 / Acre
- \$40,000 / Acre
- \$45,000 / Acre

TIF Districts

- 11
- 12
- Railroad

Locate in De Pere!
Interested in one of our parcels?
Contact Development Services
920-339-4043
dlindstrom@deperewi.gov

See next page for zoning information.
*Parcels may be divided or combined.





City of De Pere West Business Park: Available Lot Zoning

Legend

— Railroad

Zoning Districts

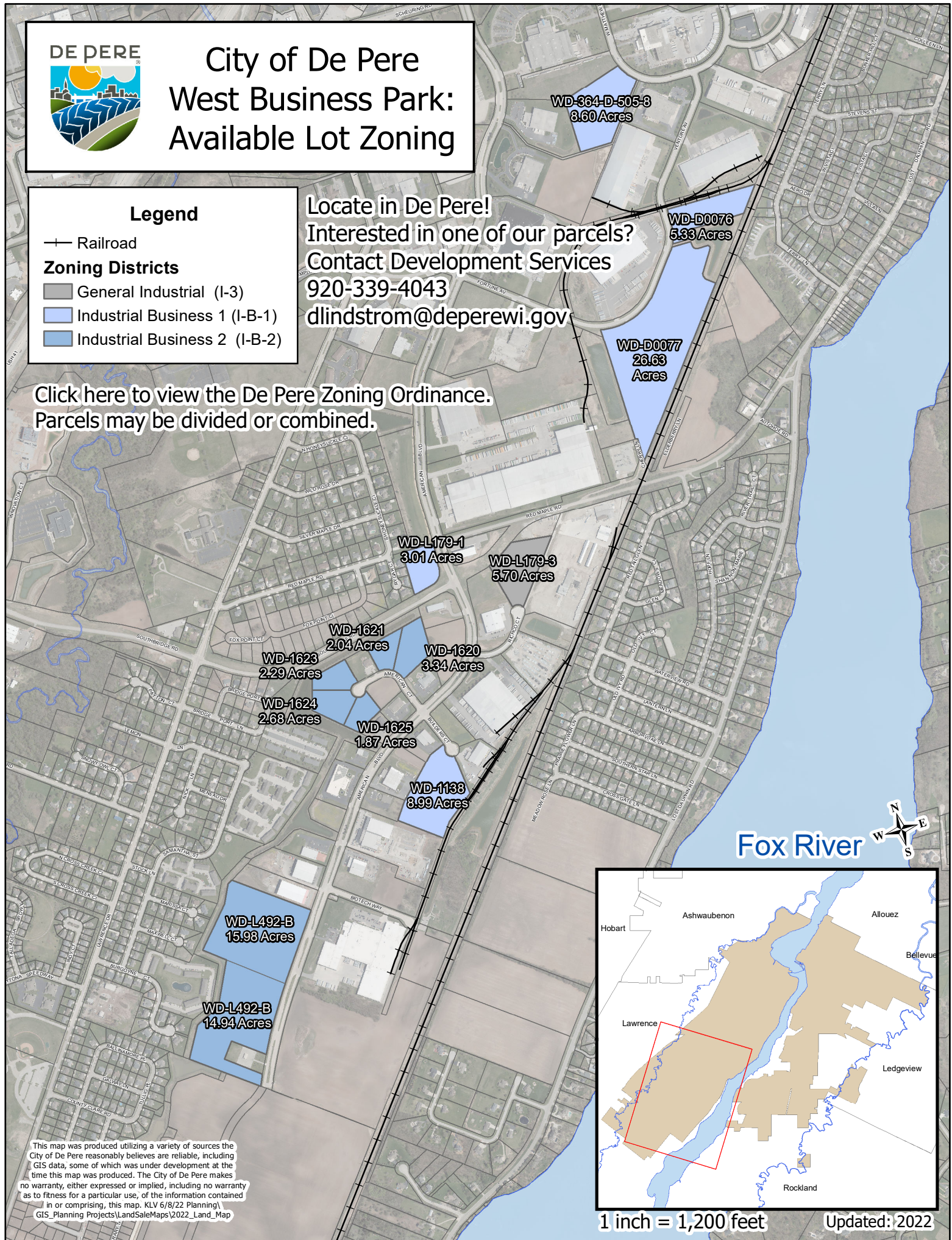
General Industrial (I-3)

Industrial Business 1 (I-B-1)

Industrial Business 2 (I-B-2)

Locate in De Pere!
Interested in one of our parcels?
Contact Development Services
920-339-4043
dlinstrom@deperewi.gov

Click here to view the De Pere Zoning Ordinance.
Parcels may be divided or combined.



This map was produced utilizing a variety of sources the City of De Pere reasonably believes are reliable, including GIS data, some of which was under development at the time this map was produced. The City of De Pere makes no warranty, either expressed or implied, including no warranty as to fitness for a particular use, of the information contained in or comprising, this map. KLV 6/8/22 Planning/GIS_Planning Projects/LandSaleMaps/2022_Land_Map