



City of De Pere East Industrial Park: Available Lots

Legend

TID

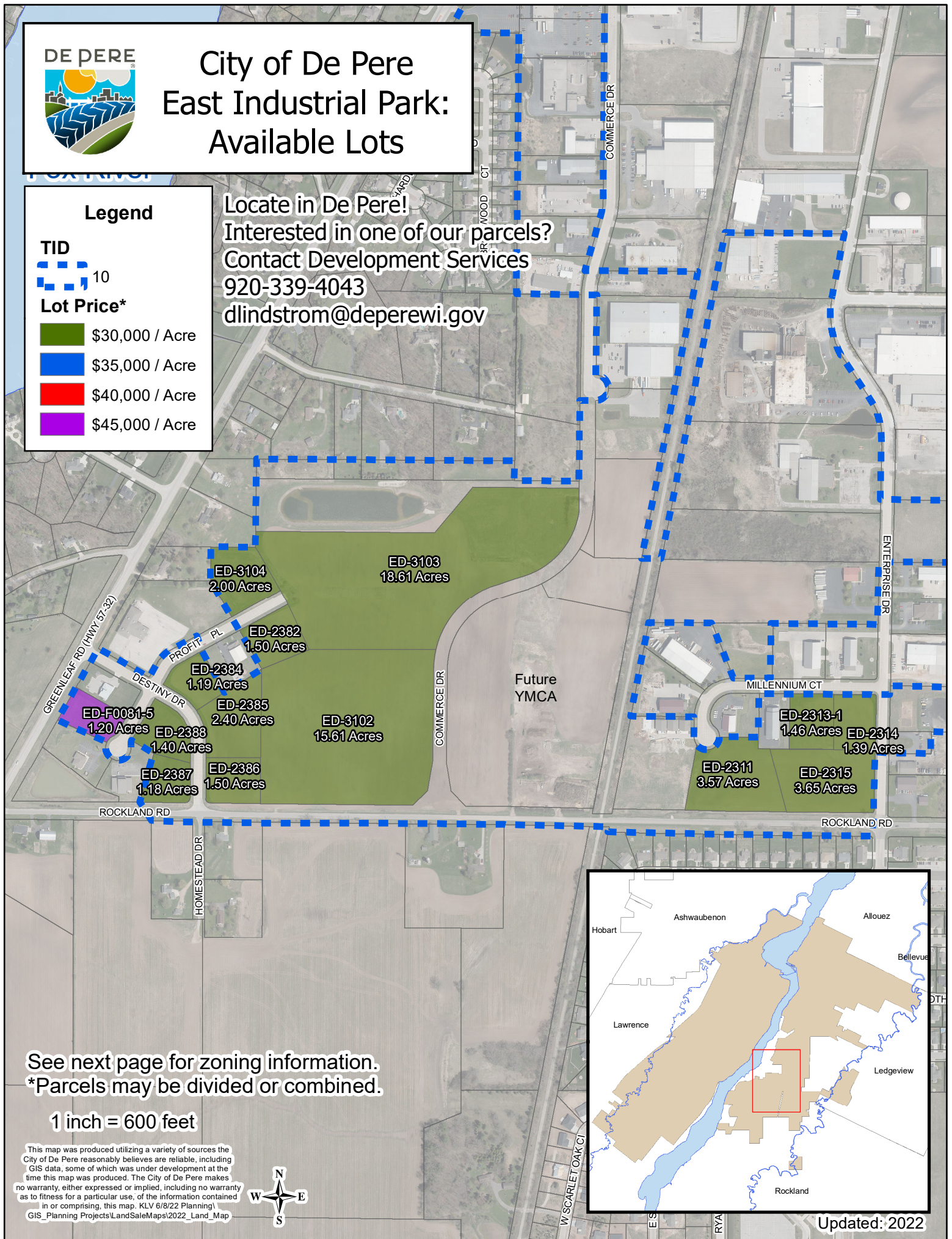


10

Lot Price*

	\$30,000 / Acre
	\$35,000 / Acre
	\$40,000 / Acre
	\$45,000 / Acre

Locate in De Pere!
Interested in one of our parcels?
Contact Development Services
920-339-4043
dlindstrom@deperewi.gov



See next page for zoning information.
*Parcels may be divided or combined.

1 inch = 600 feet

This map was produced utilizing a variety of sources the City of De Pere reasonably believes are reliable, including GIS data, some of which was under development at the time this map was produced. The City of De Pere makes no warranty, either expressed or implied, including no warranty as to fitness for a particular use, of the information contained in or comprising, this map. KLV 6/8/22 Planning\GIS_Planning Projects\LandSaleMaps\2022_Land_Map


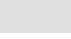



Updated: 2022

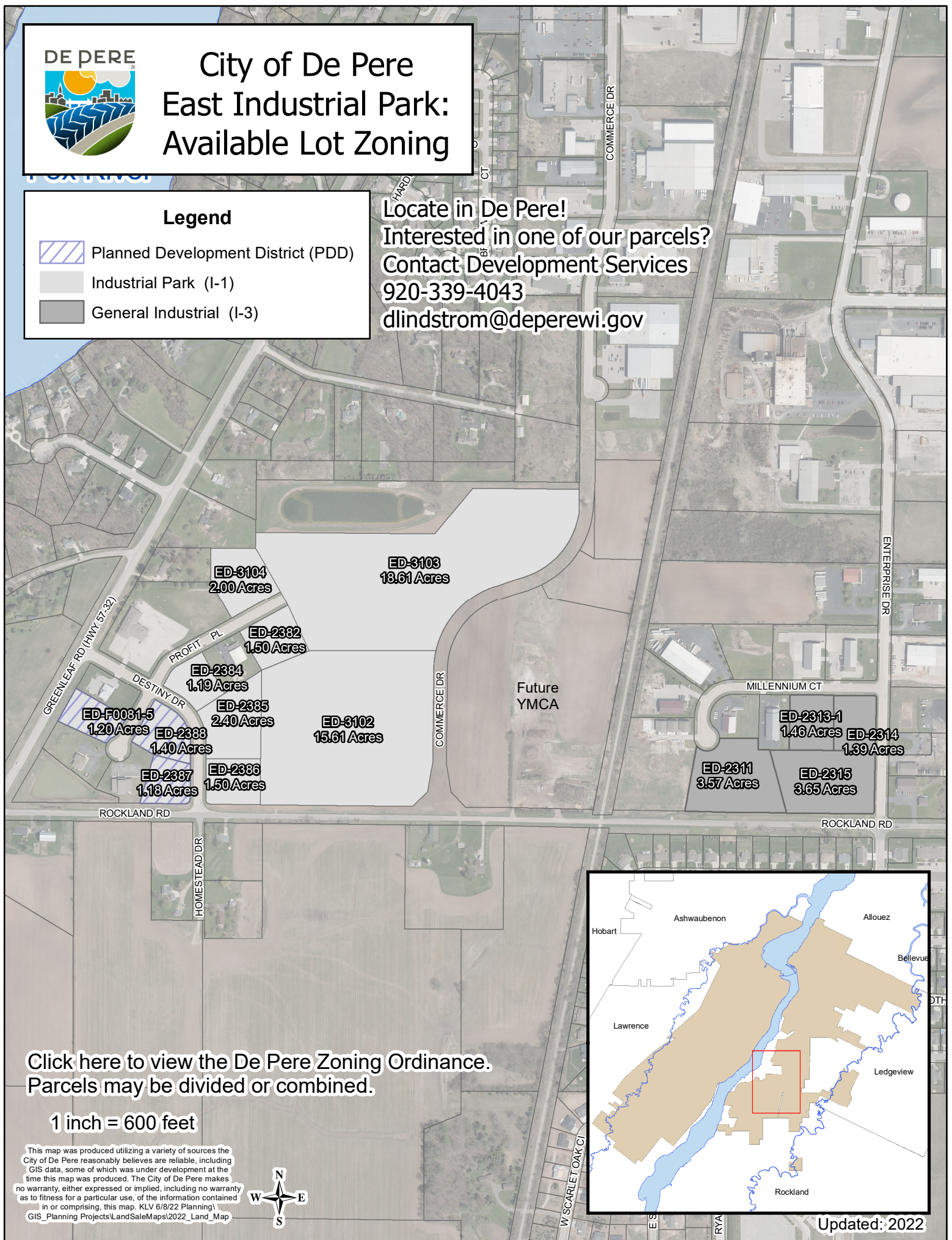


City of De Pere East Industrial Park: Available Lot Zoning

Legend

-  Planned Development District (PDD)
-  Industrial Park (I-1)
-  General Industrial (I-3)

Locate in De Pere!
Interested in one of our parcels?
Contact Development Services
920-339-4043
dclindstrom@deperewi.gov



Click here to view the De Pere Zoning Ordinance.
Parcels may be divided or combined.

1 inch = 600 feet

This map was produced utilizing a variety of sources the City of De Pere reasonably believes are reliable, including GIS data, some of which was under development at the time this map was produced. The City of De Pere makes no warranty, either expressed or implied, including no warranty as to fitness for a particular use, of the information contained in or comprising, this map. KLV 6/8/22 Planning\GIS_Planning Projects\LandSaleMaps\2022_Land_Map



Updated: 2022