



# Planning/Zoning Application

Planning & Zoning Department

**Submitted On:**

Sep 5, 2024, 10:29AM EDT

<b>Parcel Number: (Include ALL parcels)</b>	WD-709-1
<b>Nearest property address to the project site:</b>	<b>Street Address:</b> 950 Main Ave. A <b>City:</b> De Pere <b>State:</b> W <b>Zip:</b> 54115
<b>Check each project type that is being applied for:</b>	Site Plan
<b>Current De Pere Zoning Districts:</b>	MX3
<b>Existing Site Land Uses:</b>	Commercial
<b>Proposed Site Land Uses:</b>	Commercial
<b>Does the project comply with the Comprehensive Plan?</b>	Yes
<b>Has City Staff been contacted for a preapplication meeting?</b>	Yes
<b>Property Owner:</b>	<b>First Name:</b> Jeremy <b>Last Name:</b> Alsaker
<b>Is the property owner's address the same as the nearest property address?</b>	No
<b>Property Owner's Address:</b>	<b>Street Address:</b> P.O. Box 120 <b>City:</b> Wisconsin Dells <b>State:</b> W <b>Zip:</b> 53965
<b>Property Owner's Phone Number:</b>	2243182140
<b>Property Owner's Email Address:</b>	mariov@mrvarch.com
<b>Is someone processing the project for the property owner as their authorized representative?</b>	Yes
<b>Authorized Representative's Name:</b>	<b>First Name:</b> Erik <b>Last Name:</b> Valiulis
<b>Authorized Representative's Business Name:</b>	MRV Architects, Inc.

<b>Authorized Representative's Phone Number:</b>		2243182140
<b>Authorized Representative's Email Address:</b>		erikv@mrvarch.com
<b>Please attach a PDF copy of the site plan.</b>		24042_De Pere, W_Bridge Remodel_ CD Set.pdf
<b>Would you like a basic checklist of information to include in the site plan?</b>		Yes
<b>How do you plan on paying for your application?</b>		Online with a credit card
<b>Total Due:</b>		\$350.00
<b>Signature Data</b>	First Name: Erik Last Name: Valiulis Email Address: Erikv@mrvarch.com	
		
		Signed at: September 5, 2024 10:28am America/New_York
<b>User's Session Information</b>		IP Address: 73.73.42.111 Referrer URL:

# CITY OF DE PERE

335 South Broadway, De Pere, WI 54115 | [www.de-pere.org](http://www.de-pere.org)



October 17, 2024

Erik Valerius  
MRV Architects INC  
5105 Tollview DR, Suite 201  
Rolling Meadows, IL 60008

RE: Site Plan Review for the Dunkin' Façade Replacement at 950 Main AV, Unit A  
(Parcel WD-709-1)

Dear Erik:

Thank you for the revised site plan for the Dunkin' Façade Replacement at 950 Main AV, Unit A. The City of De Pere staff reviewed the site plan on October 17, 2024, and recommended approval with no conditions.

You may now proceed to the Inspection Division to begin the process of obtaining permits. Should you have any questions regarding the decision or require further information, feel free to contact me at 339-4043 or [pschleinz@deperewi.gov](mailto:pschleinz@deperewi.gov).

Sincerely,

A handwritten signature in black ink that reads "Peter Schleinz". The signature is fluid and cursive, with a long horizontal stroke extending to the right.

Peter Schleinz  
Senior Planner | Zoning Administrator

cc: Daniel J. Lindstrom, AICP, Development Services Director  
Dennis Jensen, Senior Building Inspector







CONSTRUCTION SPECIFICATIONS:

<div>SECTION 02 4116 STRUCTURE DEMOLITION</div> <div><div><div><div>PART 1GENERAL</div><div>1.1 SUMMARY</div><div>A. SECTION INCLUDES:</div><div>1. DEMOLITION OF DESIGNATED STRUCTURES.</div><div>2. DEMOLITION OF FOUNDATIONS AND SLABS ON GRADE AS REQUIRED.</div><div>3. DISCONNECTION AND CAPPING OR REMOVAL OF UTILITIES.</div><div>4. DEMOLITION OF WALKS, PAVING, CURBS, GUTTERS, AND SITE IMPROVEMENTS.</div><div>5. REMOVAL OF MATERIALS FROM SITE.</div></div></div><div><div><div>PART 2PRODUCTS</div><div>NOT APPLICABLE</div></div></div><div><div><div>PART 3EXECUTION</div><div>3.1 PREPARATION</div><div>A. PRIOR TO BEGINNING DEMOLITION, VERIFY THAT:</div><div>1. STRUCTURES ARE UNOCCUPIED AND REMOVED FROM SERVICE.</div><div>2. TEMPORARY CURBS AND DEVICES ARE IN PLACE AND OPERATIONAL.</div><div>3. UTILITIES ARE TEMPORARILY OR PERMANENTLY DISCONNECTED OR RELOCATED AS REQUIRED.</div><div>4. ITEMS SALVAGED FOR OWNER ARE REMOVED AND STORED IN DESIGNATED AREA.</div></div><div>3.2 DEMOLITION</div><div>A. DEMOLISH STRUCTURES IN ACCORDANCE WITH DEMOLITION PROCEDURES APPROVED BY ARCHITECT.</div><div>B. SPRINKLE DEBRIS, AND USE TEMPORARY CLOSURES AS NECESSARY TO LIMIT DUST TO LOWEST PRACTICAL LEVEL.</div><div>C. DO NOT USE WATER TO EXTENT CAUSING FLOODING, CONTAMINATED RUNOFF, OR ICING.</div><div>D. BEGIN DEMOLITION AT TOP OF BUILDING AND PROCEED TO LOWEST LEVEL, NOT USING EXPLOSIVES.</div><div>E. DEMOLISH STRUCTURE ABOVE EACH FLOOR LEVEL BEFORE DAMAGING SUPPORTING MEMBERS ON LOWER LEVELS.</div><div>F. REMOVE SLABS AND FOUNDATIONS TO DEPTH INDICATED.</div></div><div>3.3 MATERIAL DISPOSAL</div><div>A. SALVAGE: REMOVE, PROTECT, AND RELOCATE MATERIALS DESIGNATED TO REMAIN PROPERTY OF OWNER.</div><div>B. DISPOSAL:</div><div>1. MATERIALS, EQUIPMENT, AND DEBRIS RESULTING FROM DEMOLITION OPERATIONS BECOMES PROPERTY OF CONTRACTOR. REMOVE DEBRIS AS SOON AS PRACTICAL.</div><div>2. COVER DEBRIS IN TRUCKS TO PREVENT SPILLAGE DURING TRANSPORTATION.</div><div>3. DO NOT STORE OR BURN MATERIALS ON SITE.</div><div>4. TRANSPORT DEBRIS TO OFF-SITE DISPOSAL AREA AND LEGALLY DISPOSE OF.</div></div>
---

SECTION 03 3000  
CAST-IN-PLACE CONCRETE

PART 1GENERAL

1.1 SUMMARY

A. SECTION INCLUDES:

1. CAST-IN-PLACE CONCRETE FOR FOUNDATIONS AND SLABS ON GRADE.

2. EQUIPMENT PADS.

3. BASES FOR LIGHTING FIXTURES.

PART 2PRODUCTS

2.2 MATERIALS

A. PORTLAND CEMENT: ASTM C150, TYPE I OR III, GRAY COLOR.

B. AGGREGATES:

1. FINE: ASTM C33, CLEAN, HARD, DURABLE, UNCOATED NATURAL SAND, FREE FROM SILT, LOAM, AND CLAY.

2. COARSE: ASTM C33, CLEAN, HARD, DURABLE, UNCOATED CRUSHED STONE, MAXIMUM SIZE 3/4 INCH.

C. FLY ASH: ASTM C618, MAXIMUM 2 PERCENT LOSS ON IGNITION.

2.3 ACCESSORIES

A. WATER, CLEAN AND POTABLE.

B. ADMIXTURES:

1. WATER REDUCING OR WATER REDUCING/SET RETARDING: ASTM C494, TYPE A OR D.

2. AIR ENTRAINING: ASTM C260.

3. EXPANSION JOINT FILLER: ASTM D1752, NON-ASPHALTIC TYPE.

4. BONDING AGENT: TWO COMPONENT MODIFIED EPOXY RESIN.

2.4 MIXES

A. PROPORTIONS: IN ACCORDANCE WITH ACI 301.

B. DESIGN CONCRETE TO YIELD CHARACTERISTICS INDICATED ON DRAWINGS.

C. AIR ENTRAINED CONCRETE, PROVIDE AIR ENTRAINING ADMIXTURE TO PRODUCE 4 TO 6 PERCENT AIR BY VOLUME OF CONCRETE.

D. USE ACCELERATING ADMIXTURE IN COLD WEATHER ONLY WHEN APPROVED BY ARCHITECT. USE OF ADMIXTURES WILL NOT REDUCE COLD WEATHER PLACEMENT REQUIREMENTS.

E. FLY ASH CONTENT: MINIMUM PERCENT BY WEIGHT OF CEMENTITIOUS MATERIAL IN MIX AS SHOWN ON DRAWINGS.

F. THE MATERIAL(S) IN THE PRODUCT(S) SUPPLIED SHOULD HAVE A RECYCLED CONTENT SUCH THAT THE SUM OF THE POST-CONSUMER RECYCLED CONTENT PLUS ONE-HALF OF THE PRE-CONSUMER CONTENT CONSTITUTES AT LEAST 20 % OF THE TOTAL VALUE OF THE MATERIAL IN THE PROJECT.

PART 3EXECUTION

3.1 PREPARATION

A. NOTIFY TESTING LABORATORY MINIMUM 24 HOURS PRIOR TO PLACING CONCRETE.

B. ACCURATELY POSITION ANCHOR BOLTS, SLEEVES, CONDUIT, INSERTS, AND ACCESSORIES. DO NOT CUT REINFORCING STEEL TO FACILITATE INSTALLATION OF INSERTS OR ACCESSORIES.

C. REMOVE WATER AND DEBRIS FROM FORMS AND EXCAVATIONS.

D. CLOSE OPENINGS LEFT IN FORMS FOR CLEANING AND INSPECTION.

3.2 PLACEMENT OF CONCRETE

A. PLACE CONCRETE IN ACCORDANCE WITH ACI 301 AND ACI 318.

B. ENSURE REINFORCEMENT, INSERTS, AND EMBEDDED PARTS ARE NOT DISTURBED DURING CONCRETE PLACEMENT.

C. DEPOSIT CONCRETE AS NEARLY AS POSSIBLE IN ITS FINAL POSITION TO MINIMIZE HANDLING AND FLOWING.

D. PLACE CONCRETE CONTINUOUSLY BETWEEN PREDETERMINED EXPANSION, CONTROL, AND CONSTRUCTION JOINTS.

E. DO NOT PLACE PARTIALLY HARDENED, CONTAMINATED, OR RE-TEMPERED CONCRETE.

F. DO NOT ALLOW CONCRETE TO FREE FALL OVER 8 FEET, PROVIDE TREMIES, CHUTES, OR OTHER MEANS OF CONVEYANCE.

G. CONSOLIDATE CONCRETE WITH MECHANICAL VIBRATING EQUIPMENT. HAND COMPACT IN CORNERS AND ANGLES OF FORMS.

H. SCREED SLABS LEVEL, TO FLATNESS TOLERANCE OF 1/8 INCH IN 10 FEET.

3.3 PLACEMENT OF GROUT

A. REMOVE LOOSE AND FOREIGN MATTER FROM CONCRETE; LIGHTLY ROUGHEN BONDING SURFACE.

B. JUST PRIOR TO GROUTING, THOROUGHLY WET CONCRETE SURFACES; REMOVE EXCESS WATER.

C. MIX GROUT IN ACCORDANCE WITH MANUFACTURER'S INSTRUCTIONS. DO NOT RE-TEMPER.

D. PLACE GROUT CONTINUOUSLY, BY MOST PRACTICAL MEANS; AVOID ENTRAPPED AIR. DO NOT VIBRATE GROUT.

3.4 PROTECTION

A. IMMEDIATELY AFTER PLACEMENT, PROTECT CONCRETE FROM PREMATURE DRYING, EXCESSIVELY HOT OR COLD TEMPERATURES, AND MECHANICAL INJURY.

B. MAINTAIN CONCRETE WITH MINIMAL MOISTURE LOSS AT RELATIVELY CONSTANT TEMPERATURE FOR PERIOD NECESSARY FOR HYDRATION OF CEMENT AND HARDENING OF CONCRETE.

C. PROVIDE ARTIFICIAL HEAT TO MAINTAIN TEMPERATURE OF CONCRETE ABOVE MINIMUM SPECIFIED TEMPERATURE FOR DURATION OF CURING PERIOD.

D. KEEP FORMS SUFFICIENTLY WET TO PREVENT CRACKING OF CONCRETE OR LOOSENING OF FORM JOINTS.

3.5 CURING

A. CURE CONCRETE IN ACCORDANCE WITH ACI 308:

1. HORIZONTAL SURFACES:

a. SURFACES TO RECEIVE ADDITIONAL TOPPING OR SETTING BEDS: USE CURING PAPER METHOD.

b. OTHER SURFACES: USE EITHER CURING PAPER OR CURING COMPOUND METHOD.

2. VERTICAL SURFACES: USE EITHER WET CURING OR CURING COMPOUND METHOD.

B. CURING COMPOUND METHOD:

1. SPRAY COMPOUND ON SURFACES IN TWO COATS, APPLYING SECOND AT RIGHT ANGLE TO FIRST, AT MINIMUM RATE RECOMMENDED BY MANUFACTURER.

2. RESTRICT TRAFFIC ON SURFACES DURING CURING.

C. CURING PAPER METHOD:

1. SPREAD CURING PAPER OVER SURFACES, LAPPING ENDS AND SIDES MINIMUM 4 INCHES; MAINTAIN IN PLACE BY USE OF WEIGHTS.

2. REMOVE PAPER AFTER CURING.

D. WET CURING METHOD: SPRAY WATER OVER SURFACES AND MAINTAIN WET FOR 7 DAYS.

3.6 CLEANING

A. REMOVE EFFLORESCENCE, STAINS, OIL, GREASE, AND FOREIGN MATERIALS FROM EXPOSED SURFACES.

3.7 FIELD QUALITY CONTROL

A. TESTING AND INSPECTION SERVICES:

1. CERTIFY EACH DELIVERY TICKET.

2. RECORD TIME AT WHICH CONCRETE WAS DISCHARGED FROM TRUCK.

3. MONITOR AND RECORD AMOUNT OF WATER AND WATER REDUCING ADMIXTURE ADDED TO CONCRETE AT PROJECT SITE.

4. DETERMINE AMBIENT TEMPERATURE AND TEMPERATURE OF CONCRETE SAMPLE FOR EACH SET OF TEST CYLINDERS.

5. TEST CYLINDERS:

a. MAKE TEST CYLINDERS IN ACCORDANCE WITH ASTM C172; ONE SET OF 3 CYLINDERS



CONSTRUCTION SPECIFICATIONS:

SECTION 09 9100 PAINTING	
<b>PART 1      GENERAL</b>	
1.1 SUMMARY	
A. SECTION INCLUDES:	1. TEXTURING OF GYPSUM BOARD.
	2. SURFACE PREPARATION AND FIELD APPLICATION OF PAINTS.
1.2 SUBMITTALS	
A. SUSTAINABLE DESIGN SUBMITTALS:	1. REGIONAL MATERIALS.
	2. LOW-EMITTING MATERIALS.
1.3 DELIVERY, STORAGE AND HANDLING	
A. PAINT MATERIALS: STORE AT AMBIENT TEMPERATURE FROM 45 TO 90 DEGREES F IN VENTILATED AREA, OR AS REQUIRED BY MANUFACTURER'S INSTRUCTIONS.	
1.4 PROJECT CONDITIONS	
A. DO NOT APPLY MATERIALS WHEN SURFACE AND AMBIENT TEMPERATURES OR RELATIVE HUMIDITY ARE OUTSIDE RANGES REQUIRED BY PAINT MANUFACTURER.	
B. MAINTAIN AMBIENT AND SUBSTRATE TEMPERATURES ABOVE MANUFACTURER'S MINIMUM REQUIREMENTS FOR 24 HOURS BEFORE, DURING AND AFTER PAINT APPLICATION.	
C. DO NOT APPLY MATERIALS WHEN RELATIVE HUMIDITY IS ABOVE 85 PERCENT OR WHEN DEW POINT IS LESS THAN 5 DEGREES F DIFFERENT THAN AMBIENT OR SURFACE TEMPERATURE.	
D. PROVIDE LIGHTING LEVEL OF 30 FOOTCANDLES AT SUBSTRATE SURFACE.	
1.5 MAINTENANCE	
A. EXTRA MATERIALS: 1 GALLON OF EACH COLOR AND SHEEN.	
<b>PART 2      PRODUCTS</b>	
2.1 MANUFACTURERS	
A. ACCEPTABLE MANUFACTURERS:	1. SHERWIN WILLIAMS (WWW.SHERWIN-WILLIAMS.COM)
B. SUBSTITUTIONS: NOT PERMITTED.	
2.2 MATERIALS	
A. PAINTS:	1. AS SCHEDULED AT END OF SECTION, OR APPROVED SUBSTITUTE.
	2. FREE FROM ALL FORMS OF LEAD AND MERCURY.
	3. ALL PAINTS USED IN EITHER FOOD PREPARATION, SALES OR STORAGE AREAS MUST BE NON-TOXIC TO FOODS.
2.3 ACCESSORIES	
A. ACCESSORY MATERIALS: PAINT THINNERS AND OTHER MATERIALS REQUIRED TO ACHIEVE SPECIFIED FINISHES: COMMERCIAL QUALITY.	
B. PATCHING MATERIALS: LATEX FILLER.	
C. FASTENER HEAD COVER MATERIALS: LATEX FILLER.	
2.3 MIXES	
A. DELIVER PAINTS PRE-MIXED AND PRE-TINTED.	
B. UNIFORMLY MIX TO THOROUGHLY DISPERSE PIGMENTS.	
C. DO NOT THIN IN EXCESS OF MANUFACTURER'S RECOMMENDATIONS.	
D. RE-MIX PAINT DURING APPLICATION; ENSURE COMPLETE DISPERSION OF SETTLED PIGMENT AND UNIFORMITY OF COLOR AND GLOSS.	
<b>PART 3      EXECUTION</b>	
3.1 EXAMINATION	
A. TEST SHOP APPLIED PRIMER FOR COMPATIBILITY WITH SUBSEQUENT COATINGS.	
B. MEASURE MOISTURE CONTENT OF SURFACES USING ELECTRONIC MOISTURE METER. DO NOT APPLY COATINGS UNLESS MOISTURE CONTENT OF SURFACES ARE BELOW FOLLOWING MAXIMUMS:	1. GYPSUM BOARD AND PLASTER: 12 PERCENT.
	2. WOOD: 15 PERCENT, MEASURED TO ASTM D4442.
3.2 PREPARATION	
A. GENERAL:	1. PROTECT ADJACENT AND UNDERLYING SURFACES.
	2. REMOVE OR MASK ELECTRICAL PLATES, HARDWARE, LIGHT FIXTURE TRIM, ESCUTCHEONS, AND FITTINGS PRIOR TO PREPARING SURFACES OR FINISHING.
	3. CORRECT DEFECTS AND CLEAN SURFACES CAPABLE OF AFFECTING WORK OF THIS SECTION.
	4. SEAL MARKS THAT MAY BLEED THROUGH SURFACE FINISHES WITH SHELLAC.
B. IMPERVIOUS SURFACES: REMOVE MILDEW BY SCRUBBING WITH SOLUTION OF TRISODIUM PHOSPHATE AND BLEACH. RINSE WITH CLEAN WATER AND ALLOW TO DRY.	
C. GYPSUM BOARD:	1. FILL MINOR DEFECTS WITH FILLER COMPOUND. SPOT PRIME DEFECTS AFTER REPAIR.
D. PLASTER:	1. FILL HAIRLINE CRACKS, SMALL HOLES, AND IMPERFECTIONS WITH LATEX PATCHING PLASTER. FINISH SMOOTH AND FLUSH WITH ADJACENT SURFACES.
	2. WASH AND NEUTRALIZE HIGH ALKALI SURFACES.
E. ALUMINUM: SSPC METHOD SP1 - SOLVENT CLEANING.	
F. UNCOATED FERROUS METALS: SSPC METHOD SP2 - HAND TOOL CLEANING OR METHOD SP3 - POWER TOOL CLEANING.	
G. SHOP PRIMED FERROUS METALS:	1. SSPC METHOD SP2 - HAND TOOL CLEANING OR METHOD SP3 - POWER TOOL CLEANING.
	2. FEATHER EDGES TO MAKE PATCHES INCONSPICUOUS.
	3. PRIME BARE STEEL SURFACES.
H. INTERIOR WOOD:	1. WIPE OFF DUST AND GRIT.
	2. SEAL KNOTS, PITCH STREAKS, AND SAPPY SECTIONS WITH SEALER.
	3. FILL NAIL HOLES AND CRACKS AFTER PRIMER HAS DRIED, SAND BETWEEN COATS.
I. EXISTING SURFACES:	1. REMOVE LOOSE, FLAKING, POWDERY, AND PEELING PAINTS.
	2. LIGHTLY SAND GLOSSY PAINTED SURFACES.
	3. FILL HOLES, CRACKS, DEPRESSIONS AND OTHER IMPERFECTIONS WITH PATCHING COMPOUND, SAND FLUSH WITH SURFACE.
	4. REMOVE OIL, GREASE, AND WAX BY SCRAPING, SOLVENT WASH AND THOROUGHLY RINSE.
	5. REMOVE RUST BY WIRE BRUSHING TO EXPOSE BASE METAL.
3.3 APPLICATION	
A. APPLY PAINTS IN ACCORDANCE WITH MPI PAINTING MANUAL, PREMIUM GRADE FINISH REQUIREMENTS.	
B. APPLY PRIMER OR FIRST COAT CLOSELY FOLLOWING SURFACE PREPARATION TO PREVENT RECONTAMINATION.	
C. DO NOT APPLY FINISHES TO SURFACES THAT ARE NOT DRY.	
D. APPLY COATINGS TO MINIMUM DRY FILM THICKNESS RECOMMENDED BY MANUFACTURER.	
E. APPLY EACH COAT OF PAINT SLIGHTLY DARKER THAN PRECEDING COAT UNLESS SPECIFIED OTHERWISE.	
F. APPLY COATINGS TO UNIFORM APPEARANCE WITHOUT LAPS, SAGS, CURTAINS, HOLIDAYS, AND BRUSH MARKS.	
G. ALLOW APPLIED COATS TO DRY BEFORE NEXT COAT IS APPLIED.	
H. WHEN REQUIRED ON DEEP AND BRIGHT COLORS APPLY AN ADDITIONAL FINISH COAT TO ENSURE COLOR CONSISTENCY.	
I. CONTINUE PAINT FINISHES BEHIND WALL-MOUNTED ACCESSORIES.	
J. SAND BETWEEN COATS ON INTERIOR WOOD AND METAL SURFACES.	
K. MATCH FINAL COAT TO APPROVED COLOR SAMPLES.	
L. WHERE CLEAR FINISHES ARE SPECIFIED, TINT FILLERS TO MATCH WOOD. WORK FILLERS INTO GRAIN BEFORE SET. WIPE EXCESS FROM SURFACE.	
M. PRIME CONCEALED SURFACES OF INTERIOR WOOD AND INTERIOR WOOD IN CONTACT WITH MASONRY OR CEMENTITIOUS MATERIALS) WITH ONE COAT PRIMER PAINT.	
N. MECHANICAL AND ELECTRICAL COMPONENTS:	1. PAINT FACTORY PRIMED EQUIPMENT.
	2. REMOVE UNFINISHED AND PRIMED LOUVERS, GRILLES, COVERS, AND ACCESS PANELS; PAINT SEPARATELY.
	3. PAINT EXPOSED AND INSULATED PIPES, CONDUIT, BOXES, DUCTS, HANGERS, BRACKETS, COLLARS, AND SUPPORTS UNLESS FACTORY FINISHED.
	4. DO NOT PAINT NAME TAGS OR IDENTIFYING MARKINGS.
	5. PAINT EXPOSED CONDUIT AND ELECTRICAL EQUIPMENT IN FINISHED AREAS.
	6. PAINT DUCT WORK BEHIND LOUVERS, GRILLS, AND DIFFUSERS FLAT BLACK TO MINIMUM OF 18 INCHES OR BEYOND SIGHT LINE.
O. DO NOT PAINT:	1. SURFACES INDICATED ON DRAWINGS OR SPECIFIED TO BE UNPAINTED OR UNFINISHED.
	2. SURFACES WITH FACTORY APPLIED FINISH COAT OR INTEGRAL FINISH.
	3. ARCHITECTURAL METALS, INCLUDING BRASS, BRONZE, STAINLESS STEEL, AND CHROME PLATING.
3.4 ADJUSTING	

A. TOUCH UP OR REFINISH DISFIGURED SURFACES.
3.5 CLEANING
A. REMOVE PAINT FROM ADJACENT SURFACES.
3.6 NEW BUILDING - EXTERIOR FINISH SCHEDULE
A. DOORS AND TRIM
1. BACK DOOR
GALVANIZED IRON, NEW
PRIMER: PRO INDUSTRIAL PRO-CRYL UNIVERSAL PRIMER, B66-310 SERIES, <100 G/L VOC
1ST COAT: PRO INDUSTRIAL ZERO VOC ACRYLIC SEMI-GLOSS, B66-650 SERIES, 0 G/L VOC
2ND COAT: PRO INDUSTRIAL ZERO VOC ACRYLIC SEMI-GLOSS, B66-650 SERIES, 0 G/L VOC
2. ALUMINUM TRIM
PRIME COAT: S-W DTM WASH PRIMER, B71Y1 (3.4 MILS. WET, 0.7 MILS. DRY)
1ST COAT: PRO INDUSTRIAL ZERO VOC ACRYLIC SEMI-GLOSS, B66-650 SERIES, 0 G/L VOC
2ND COAT: PRO INDUSTRIAL ZERO VOC ACRYLIC SEMI-GLOSS, B66-650 SERIES, 0 G/L VOC
3.7 NEW BUILDING - INTERIOR FINISH SCHEDULE - N/A
3.8 REMODELING SPECIFICATIONS - EXTERIOR FINISH SCHEDULE (PAINTING OVER METAL)
A. EXTERIOR METAL PANELS (ATAS)
ALUMINUM, REPAINT- REFER TO SHERWIN WILLIAMS APPLICATION BULLETIN 1.23 AND 1.27 FOR DETAILED INFORMATION
SPOT PRIME: S-W PRO-CRYL UNIVERSAL PRIMER AT AREAS WHICH HAVE SIGNS OF RUST
1ST COAT: S-W BOND-PLEX ACRYLIC COATING
2ND COAT: S-W BOND-PLEX ACRYLIC COATING
B. BACK DOOR (NEW, REPAINTED OR WEATHERED)
PRIMER: PRO INDUSTRIAL PRO-CRYL UNIVERSAL PRIMER, B66-310 SERIES, <100 G/L VOC
1ST COAT: PRO INDUSTRIAL ZERO VOC ACRYLIC SEMI-GLOSS, B66-650 SERIES, 0 G/L VOC
2ND COAT: PRO INDUSTRIAL ZERO VOC ACRYLIC SEMI-GLOSS, B66-650 SERIES, 0 G/L VOC
C. EXTERIOR WALLS
CMU (STANDARD)
1ST COAT: S-W PREPRITE BLOCK FILLER, B25W25 (75-125 SQ FT/GAL)
2ND COAT: S-W A-100 EXTERIOR LATEX GLOSS, A8 SERIES
3RD COAT: S-W A-100 EXTERIOR LATEX GLOSS, A8 SERIES (4 MILS WET, 1.4 MILS DRY PER COAT)
3.9 REMODELING SPECIFICATIONS - INTERIOR FINISH SCHEDULE (REFER TO SECTION 3.6 FOR ALL WALLS, SOFFITS, CEILINGS, DOORS AND TRIMS NOT LISTED BELOW)
A. DOORS AND TRIMS
WOOD, REPAINT
PRIMER: HARMONY ZERO VOC WALL PRIMER, B11W1500, 0 G/L VOC
1ST COAT: PRO INDUSTRIAL ZERO VOC ACRYLIC SEMI-GLOSS, B66-650 SERIES, 0 G/L VOC
2ND COAT: PRO INDUSTRIAL ZERO VOC ACRYLIC SEMI-GLOSS, B66-650 SERIES, 0 G/L VOC

**SECTION 26 1000  
ELECTRICAL**

**PART 1      GENERAL**

**1.1 WORK INCLUDED**

**A. FURNISH ALL LABOR, MATERIAL AND EQUIPMENT NECESSARY FOR THE COMPLETE INSTALLATION OF THE ELECTRICAL SYSTEM AS SHOWN ON THE DRAWINGS, INCLUDING FINAL CONNECTIONS TO LESSEES OR FRANCHISE OWNER'S EQUIPMENT AND SIGNS, AS SPECIFIED HEREIN, IN ACCORDANCE WITH THE NATIONAL ELECTRICAL CODE, STATE ELECTRICAL CODE, THE REQUIREMENTS OF THE LOCAL UTILITY COMPANY, AND ALL APPLICABLE CODES AND LAWS.**

**B. IT IS THE INTENT OF THIS SECTION OF THE SPECIFICATIONS AND ACCOMPANYING ELECTRICAL DRAWINGS TO REQUIRE THESE SYSTEMS TO BE FURNISHED COMPLETE IN EVERY RESPECT. FURNISH ALL WIRING AND EQUIPMENT NEEDED AND USUALLY FURNISHED IN CONNECTION WITH SUCH WORK, WHETHER SPECIFICALLY MENTIONED OR NOT.**

**1.2 PERMITS**

**A. PROCURE ALL NECESSARY PERMITS FOR WORK INSTALLED; PAY ALL FEES AND CHARGES CONNECTED HEREIN. DELIVER CERTIFICATES OF APPROVAL BY AUTHORITIES HAVING JURISDICTION OVER WORK, TO THE OWNER, BEFORE THE WORK WILL BE FINALLY ACCEPTED.**

**1.3 FRANCHISE OWNER'S EQUIPMENT AND SIGNS**

**A. MAKE FINAL CONNECTIONS TO ALL LESSEES OR FRANCHISE OWNER'S SIGNS AND EQUIPMENT AND FURNISH AND INSTALL ANY FITTINGS OR INCIDENTAL ACCESSORIES THAT MAY BE NECESSARY OR THAT MAY BE REQUIRED BY LOCAL CODES FOR COMPLETING FINAL CONNECTIONS AND MAKING EQUIPMENT READY FOR OPERATION.**

**B. COORDINATE WITH THE APPROVED SIGN INSTALLATION COMPANY AND, IN CONJUNCTION WITH THE SIGN COMPANY, MAKE FINAL CONNECTIONS TO SIGNS AT THE TIME OF INSTALLATION.**

**1.4 UNDER-SLAB UTILITIES**

**A. DIMENSIONS FOR ALL UNDER-SLAB UTILITIES ARE CRITICAL FOR LATER EQUIPMENT INSTALLATION. CROSS REFERENCE ALL DRAWINGS AND EQUIPMENT SPECIFICATIONS WITH THIS WORK INCLUDING THE ELEVATIONS SHOWING DIMENSIONAL LOCATION OF ALL STUBS FOR EQUIPMENT.**

**1.5 ALL-ELECTRICAL BUILDING**

**A. IN AREAS WHERE NO GAS SERVICE IS AVAILABLE AND ELECTRICITY IS REQUIRED FOR COOKING AND HEATING, ARCHITECT WILL FURNISH DRAWINGS FOR AN ALL-ELECTRIC BUILDING, WITH INCREASED SIZING OF ELECTRIC SERVICE AND EQUIPMENT TO SUIT.**

**1.6 GUARANTEES AND INSTRUCTIONS**

**A. GUARANTEE ALL EQUIPMENT, SYSTEMS AND WORK FURNISHED AND INSTALLED UNDER THIS SECTION FOR A PERIOD OF ONE (1) YEAR FROM DATE OF SUBSTANTIAL COMPLETION THEREOF, AGAINST DEFECTS IN MATERIAL, DESIGN AND WORKMANSHIP.**

**B. FAILURE OF ANY PART OR PARTS DURING GUARANTEE, OWING TO ABOVE CAUSES, SHALL BE REPLACED PROMPTLY UPON NOTICE BY ARCHITECT, WITHOUT CHARGE TO THE OWNER.**

**1.7 HEATING, VENTILATING & AIR CONDITIONING & LESSEES OR FRANCHISE OWNER'S EQUIPMENT - N/A**

<b>PART 2      PRODUCTS</b>
2.1 SERVICE MATERIAL
A. ARRANGE FOR AND INSTALL 30 AMP. MINIMUM TEMPORARY ELECTRICAL SERVICE, 120-208 VOLTS, 3-WIRE, SINGLE PHASE. REMOVE FROM SITE AFTER PERMANENT SERVICE IS OPERATING.
B. FURNISH AND INSTALL 120-208 VOLTS, 3 PHASE, 4-WIRE, 60-HERTZ PERMANENT SERVICE. AMPERAGE AS INDICATED ON DRAWINGS. MAIN SERVICE SWITCH TO BE SIZED AND FUSED COMPATIBLE WITH HEATING, VENTILATING & AIR CONDITIONING UNIT SIZE. (SEE DRAWINGS AND SECTION 15200 OF SPECIFICATIONS FOR UNIT SIZE.)
2.2 WIRES
A. MINIMUM SIZE FOR BRANCH CIRCUIT WIRING SHALL BE NO. 12 AWG SOLID COPPER FOR 600 VOLT SERVICE, WHERE PERMITTED BY LOCAL CODE. NON-METALLIC SHEATHED CABLE TYPE NMC (ROMEX) WITH GROUND WIRE MAY BE USED, IF REQUIRED BY LOCAL CODE. USE BX ARMORED CABLE OR TYPE THHN WIRE ENCLOSED IN APPROVED METAL RACEWAYS. ALUMINUM WIRE SHALL NOT BE USED.
2.3 CONDUIT
A. UNDERGROUND CONDUITS FOR PYLON SIGN, AREA LIGHTING AND DRIVE-THRU MENU SYSTEM, AS INDICATED ON THE SITE DRAWING SHALL BE HEAVY WALL, SCHEDULE 40 PVC. CONDUIT SHALL BE CAPPED DURING CONSTRUCTION TO PREVENT ENTRANCE OF FOREIGN MATTER. IF THE USE OF PVC IS NOT PERMITTED BY LOCAL CODES, ALL UNDERGROUND CONDUITS SHALL BE RIGID STEEL, HEAVY WALL GALVANIZED. CONDUIT FITTINGS EXPOSED TO WEATHER SHALL BE OF A TYPE APPROVED FOR SUCH USE AND SHALL BE PROVIDED WITH GASKETS OR OTHER MEANS OF EXCLUDING MOISTURE.
B. CONDUIT CLAMPS SHALL BE OF THE ONE SCREW MALLEABLE TYPE WITH MATCHING CLAMP BACKS, APPLIED ON THE ELECTRICAL COMPANY OR PERFORMANCE EQUAL.
C. SWAB CONDUIT DRY BEFORE PULLING WIRES. THREADS SHALL BE PROTECTED. UNDERGROUND CONDUIT IN YARD RUNS SHALL BE LAID WITH 2 FT. MINIMUM COVER OF SAND OR AS REQUIRED BY LOCAL CODE. WHERE REQUIRED BY LOCAL CODE, USE RIGID STEEL CONDUIT, HEAVY WALL GALVANIZED FOR ALL WORK WITHIN BUILDING. OTHERWISE, WHERE RACEWAYS ARE REQUIRED USE THINWALL ELECTRICAL METALLIC TUBING.
D. SEALTITE CONDUIT AND FITTINGS SHALL BE USED FOR FINAL MOTOR CONNECTIONS. SMALLEST SIZE CONDUIT FOR BRANCH CIRCUIT WIRING SHALL BE ½ INCH CONDUIT, UNLESS OTHERWISE NOTED.
2.4 DISTRIBUTION
A. SERVICE ENTRY EQUIPMENT AND DISTRIBUTION PANELS SHALL BE AS SPECIFIED AND DETAILED ON THE DRAWINGS, OR APPROVED EQUAL ONLY, IF AUTHORIZED IN WRITING BY THE ARCHITECT.
B. ALL WIRING TO AND FROM PANEL BOARDS, INCLUDING MAIN SERVICE, TO BE RUN WITHIN THE 2 BY 6 WALL (CHASE) AS SHOWN ON THE DRAWINGS.
2.5 SWITCHES AND OUTLETS
A. ALL TOGGLE SWITCHES AND RECEPTACLES SHALL BE FLUSH WITH THE FINISH WALL, UNLESS SPECIFICALLY NOTED OTHERWISE.
1. INTERIOR FLUSH BOXES SHALL BE CODE GRADE STEEL, SECURELY FASTENED WITH APPROVED DEVICES TO STUDS OR MASONRY AND SHALL BE AS MANUFACTURED BY RACO, OR APPROVED EQUAL.
2. TOGGLE SWITCHES SHALL BE TYPE 54521-21 (IVORY) AS MANUFACTURED BY LEVITON, INC., AND SHALL BE TUMBLER TYPE 20 AMP. QUIET TYPE.
3. ALL INDOOR CONVENIENCE OUTLETS SHALL BE TYPE CR-151 AS MANUFACTURED BY

LEVITON. ALL CONVENIENCE OUTLETS IN THE SALES AND DINING AREAS, ARE TO BE BROWN IF LOCATED BELOW CHAIR RAIL. ALL OTHERS ABOVE CHAIR RAIL TO BE BONE.
4. OUTLET AND SWITCH PLATES SHALL BE OF STAINLESS STEEL - LEVITON.
2.8 LIGHTING FIXTURES AND EQUIPMENT
A. LIGHTING FIXTURES, INCLUDING LAMPS AND CLOCKS IN KITCHEN AND SALES AREA, SHALL BE AS SPECIFIED AND DETAILED ON THE DRAWINGS. NO SUBSTITUTIONS WILL BE PERMITTED, UNLESS AUTHORIZED IN WRITING BY THE ARCHITECT.
1. FURNISH AND INSTALL ALL LIGHTING FIXTURES AND LAMPS IN ACCORDANCE WITH THE FIXTURE SCHEDULE SHOWN ON DRAWINGS. COMPLETE WITH NECESSARY COMPONENTS, MOUNTING AND HANGING DEVICES REQUIRED TO INSTALL THE PARTICULAR FIXTURE IN ITS DESIGNATED LOCATION, COMPLETELY WIRED AND READY FOR OPERATION.
2. KITCHEN FRYER EXHAUST HOOD WILL BE FURNISHED WITH TWO (2) VAPOR-PROOF FIXTURES. FURNISH AND INSTALL TWO (2) "A" TYPE LAMPS IN THE FIXTURES. INSTALL FIXTURES COMPLETE WITH ALL ACCESSORIES SUCH AS CLOSE NIPPLES, EXTENSION COUPLINGS, CONNECTING STRAP AND SCREWS, LOCK NUTS, HICKEYS, PLASTER RINGS TO FORM A COMPLETE FIXTURE INSTALLATION FOR USE WITH ANY TYPE OF STANDARD OUTLET OR SWITCHBOX.
3. ALL FLUORESCENT FIXTURES SHALL BE SUPPORTED INDEPENDENT OF FURRED OR SUSPENDED CEILINGS TO THE BUILDING STRUCTURE.
4. LAMPS SHALL BE LED, FLUORESCENT AND / OR INCANDESCENT AS INDICATED - 120 VOLT, SYLVANIA, WESTINGHOUSE, GENERAL ELECTRIC, OR APPROVED EQUAL. INCANDESCENT LAMPS SHALL BE RATED AT 130 VOLTS DESIGN VOLTAGE.
5. FLUORESCENT FIXTURE BALLASTS SHALL BE "P" RATED, WITH POWER FACTOR, CBM-ETL CERTIFIED AND LISTED BY THE UNDERWRITERS' LABORATORIES. ALL BALLASTS TO HAVE INTEGRAL THERMAL PROTECTION WITH AUTOMATIC RESET, UNIVERSAL OR APPROVED EQUAL.
6. REFER TO DRAWINGS FOR CEILING LAYOUT AND CONSTRUCTION.
7. ALL SALES AREA LIGHTING TO HAVE WARM WHITE LAMPS, FURNISH AND INSTALL IN EACH TOILET ONE (1) ELECTRICAL HAND DRYER AS MANUFACTURED BY EXCEL DRYER, INC. (AS PROVIDED BY NEWTON DISTRIBUTION- SEE NATIONAL ACCOUNTS), XL MODEL, WHITE METAL COVER WITH BRAND APPROVED MESSAGING, 110-120V, 12.5 AMPS, 60 HZ.
2.7 PANELBOARDS
DUNKIN' HAS A NATIONAL ACCOUNT PROGRAM FOR PANELBOARDS WITH VILLA LIGHTING. PLEASE CALL VILLA LIGHTING AT 1-800-325-0963
AND/OR EMAIL DEANNA.MCCLANAHAN@VILLALIGHTING.COM.
A. ALL PANELBOARDS SHALL BE DEAD-FRONT, SAFETY-TYPE EQUIPPED WITH SINGLE OR MULTI-POLE CIRCUIT BREAKERS, SPECIFIED IN THIS SECTION AND AS SCHEDULED ON THE DRAWINGS. ALL PANELBOARDS SHALL BE RECESSED WALL MOUNTED WITH A MINIMUM CAPACITY OF 42 CIRCUITS
B. PANELBOARDS SHALL BE SUITABLE FOR 120-208 VOLTS, THREE PHASE, FOUR WIRE OPERATIONS AS SCHEDULED ON THE DRAWINGS.
C. ALL PANELBOARDS SHALL HAVE A CIRCUIT DIRECTORY CARD MOUNTED IN A FRAME WITH PLASTIC COVER INSTALLED ON THE INSIDE OF THE DOOR. ALL DIRECTORY CARDS SHALL BE ELECTRICALLY FILLED IN "TYPE WRITTEN" AND INDICATING AREAS AND DEVICES SERVED BY EACH CIRCUIT.
D. ALL CIRCUIT BREAKERS SHALL BE BOLTED-TYPE, QUICK-MADE AND QUICK-BREAK TYPE OF MANUAL OPERATION, TRIP FREE, AND WITH INVERSE TIME CHARACTERISTICS SECURED THROUGH THE USE OF BIMETALLIC THERMAL-MAGNETIC TRIPPING ELEMENTS. ALL MULTI-POLE BREAKERS SHALL HAVE A SIMULTANEOUS TRIP.
E. SINGLE POLE, DOUBLE AND THREE-POLE CIRCUIT BREAKERS FOR LIGHTING AND POWER PANEL BOARDS SHALL BE 240 VOLTS, TYPE THQB FROM 15 AMPS THROUGH 100 AMPS, HAVING NAME INTERRUPTING CAPACITY NOT LESS THAN 10,000 AMPERES A.C. AT 240 VOLTS OR LESS.
F. PANELBOARDS SHALL BE TYPE AQ PANEL BOARDS AS MANUFACTURED BY GENERAL ELECTRIC OR EQUAL, SQUARE "D" COMPANY, I.T.E., WESTINGHOUSE OR PETERSON.
G. CIRCUIT BREAKERS IN LIGHTING PANEL SHALL BE APPROVED "SWITCHING TYPE" CIRCUIT BREAKERS.
2.8 SAFETY SWITCHES AND FUSES
DUNKIN' HAS A NATIONAL ACCOUNT PROGRAM FOR SWITCHES & FUSES WITH VILLA LIGHTING. PLEASE CALL VILLA LIGHTING AT 1-800-325-0963
AND/OR EMAIL DEANNA.MCCLANAHAN@VILLALIGHTING.COM
A. SAFETY SWITCHES SHALL BE OF THE FUSIBLE TYPE EQUIPPED WITH AN EXTERNAL LEVER OR HANDLE FOR MANUAL OPERATION WITH INTERLOCKING COVER.
B. NEUTRAL CONDUCTORS SHALL BE SOLID THROUGHOUT. SAFETY SWITCHES SHALL BE TYPE TH AS MANUFACTURED BY GENERAL ELECTRIC OR EQUAL, SQUARE "D" COMPANY, I.T.E. AND WESTINGHOUSE.
C. ALL FUSES INSTALLED IN SAFETY SWITCHES THROUGHOUT THE CONTRACT SHALL BE NON-RENEWABLE DUAL ELEMENT TYPE. FUSES SHALL BE AS MANUFACTURED BY GOULD SHAWMUT.

<b>PART 2      PRODUCTS</b>
2.1 MATERIALS
A. ENGINEERED FILL: CRUSHED STONE OR GRAVEL GRADED PER ASTM C136.
B. SAND: NATURAL RIVER OR BANK SAND, WASHED, FREE FROM SILT, CLAY, LOAM, FRIABLE OR SOLUBLE MATERIALS, AND ORGANIC MATTER, GRADED PER ASTM C136.
C. COMMON FILL: REUSED SITE OR IMPORTED SOILS FREE FROM TRASH, DEBRIS, ROOTS OVER 1 INCH IN DIAMETER, MATTED ROOTS, ROCKS OVER 3 INCHES IN DIAMETER, TOPSOIL, AND OTHER DELETERIOUS MATTER.
2.2 SOURCE QUALITY CONTROL
A. TESTING AND INSPECTION SERVICES: TEST ENGINEERED FILL PRIOR TO PLACEMENT:
1. LIQUID LIMIT, PLASTIC LIMIT, AND PLASTICITY INDEX: TEST TO ASTM D4318.
2. MOISTURE/DENSITY RELATIONSHIP: TEST TO ASTM D698.
3. PROVIDE SOIL DESCRIPTION; DETERMINE COMPLIANCE WITH GRADATION AND QUALITY REQUIREMENTS.
<b>PART 3      EXECUTION</b>
3.1 EXCAVATING
A. EXCAVATE TO GRADES AND SUBGRADES INDICATED. MAKE EXCAVATIONS LARGE ENOUGH TO PERMIT PLACING AND INSPECTION OF WORK.
B. STOCKPILE EXCAVATED MATERIALS THAT ARE SUITABLE FOR REUSE SEPARATELY FROM SUBGRADE MATERIAL.
C. REMOVE AND DISPOSE OF EXCAVATED MATERIAL THAT IS UNSUITABLE OR NOT REQUIRED FOR BACKFILLING. REMOVE UNDERGROUND OBSTRUCTIONS.
D. BRACE SIDES OF EXCAVATIONS WHERE NECESSARY. MAINTAIN UNTIL PERMANENT CONSTRUCTION IS IN PLACE. REMOVE TEMPORARY SHORING AND BRACINGS AS BACKFILL IS PLACED.
E. EXCAVATION FOR STRUCTURES:
1. FORM BOTTOMS OF EXCAVATIONS REASONABLY LEVEL.
2. MAINTAIN MOISTURE LEVEL IN EXCAVATIONS AS NEAR THEIR NATURAL LEVEL AS POSSIBLE.
F. CORRECT OVER-EXCAVATION UNDER FOOTINGS BY USE OF LEAN CONCRETE. CORRECT OTHER OVER-EXCAVATION BY USE OF ENGINEERED FILL, COMPACTED TO DENSITY OF EXISTING SUBGRADE.
G. KEEP EXCAVATIONS FREE OF WATER.
3.2 FILLING
A. PRIOR TO PLACING FILL ON EXISTING SUBSOILS:
1. PROOF ROLL TO DETECT SOFT AND WEAK ZONES. REMOVE SOFT AND SPONGY SOILS DOWN TO FIRM SUBSOIL.
2. REPLACE UNDERCUT AREAS WITH ENGINEERED FILL PLACED IN MAXIMUM 8 INCH DEEP LOOSE, EVEN, HORIZONTAL LIFTS. COMPACT EACH LIFT TO 95 PERCENT OF ASTM D1557 MODIFIED PROCTOR MAXIMUM DRY DENSITY.
B. FILL LOW AREAS OUTSIDE OF STRUCTURES AND UNDER PAVING WITH COMMON FILL TO ACHIEVE REQUIRED GRADES AND ELEVATIONS.
1. PLACE FILL IN MAXIMUM 8 INCH DEEP LOOSE, EVEN, HORIZONTAL LIFTS.
2. COMPACT EACH LIFT TO 95 PERCENT OF ASTM D1557 MODIFIED PROCTOR MAXIMUM DRY DENSITY.
C. FILL UNDER STRUCTURES WITH ENGINEERED FILL.
1. PLACE FILL IN MAXIMUM 8 INCH DEEP LOOSE, EVEN, HORIZONTAL LIFTS.
2. COMPACT EACH LIFT TO 95 PERCENT OF ASTM D1557 MODIFIED PROCTOR MAXIMUM DRY DENSITY.
D. DO NOT FILL OVER POROUS, WET, FROZEN, OR SOFT SUBGRADES.
E. BENCH FILL INTO SLOPES.
F. WHEN MOISTURE MUST BE ADDED TO AID IN COMPACTION, UNIFORMLY APPLY WATER TO SURFACE, BUT DO NOT FLOOD. FREE WATER SHALL NOT APPEAR ON SURFACE DURING OR AFTER COMPACTION OPERATIONS.
G. SCARIFY SOIL, TOO WET FOR PROPER COMPACTION AND ALLOW TO DRY. REPLACE AND RECOMPACT.
H. UNIFORMLY GRADE AREAS TO SMOOTH SURFACE AT REQUIRED GRADES AND ELEVATIONS. ADJUST CONTOURS TO ELIMINATE WATER PONDING AND PROVIDE POSITIVE DRAINAGE. MAKE GRADE CHANGES GRADUALLY. BLEND SLOPES INTO LEVEL GRADES.
I. TOLERANCES: WITHIN PLUS OR MINUS 1 INCH OF REQUIRED SUBGRADE ELEVATION.
3.3 TRENCHING
A. CUT TRENCHES SUFFICIENTLY WIDE TO ALLOW FOR INSTALLATION OF UTILITIES AND FOR INSPECTION OF WORK.
B. HAND TRIM EXCAVATIONS, REMOVE LOOSE MATTER.
C. REMOVE ROCKS AND OBSTRUCTIONS.
D. CORRECT OVER-EXCAVATION BY USE OF LEAN CONCRETE OR PIPE BEDDING MATERIAL.
E. KEEP TRENCHES FREE OF WATER.
3.4 BACKFILLING
A. BACKFILL UNDER STRUCTURES WITH ENGINEERED FILL.
1. PLACE BACKFILL IN LOOSE, EVEN, HORIZONTAL LIFTS MAXIMUM 8 INCHES DEEP.
2. COMPACT EACH LIFT TO 95 PERCENT OF ASTM D1557 MODIFIED PROCTOR MAXIMUM DRY DENSITY.
B. BACKFILL OUTSIDE OF STRUCTURES AND UNDER PAVING WITH COMMON FILL.
1. PLACE BACKFILL IN LOOSE, EVEN, HORIZONTAL LIFTS MAXIMUM 8 INCHES DEEP.
2. COMPACT EACH LIFT TO 95 PERCENT OF ASTM D1557 MODIFIED PROCTOR MAXIMUM DRY DENSITY.

<b>PART 3      EXECUTION</b>
3.1 SERVICE INSTALLATION
A. SERVICE SHALL BE BROUGHT OVERHEAD TO REAR OF BUILDING WITHOUT CROSSING ROOF OF SHOP. PROVIDE GALVANIZED PIPE AND WEATHER HEAD IN SIZE AS SHOWN ON DRAWINGS. BOLTED TO WALL WITH THROUGH BOLTS AND PLATE WASHERS INSIDE (UNLESS OTHERWISE SHOWN ON DRAWINGS). PIPE TO EXTEND 8 FT. MINIMUM ABOVE ROOF AND 6 FT. ON WALL. PROVIDE ADDITIONAL SUPPORT TO MAST, EXTENDING ABOVE ROOF, IF REQUIRED, TO PREVENT BENDING. PIPE TO OFFSET IF NECESSARY FOR CLEARANCE OF STRUCTURE.
B. SEE SITE PLAN FOR UNDERGROUND SERVICE TO REAR OF BUILDING. INCLUDE ANY CHANGES REQUIRED IN THE ELECTRICAL PANELS, SWITCHES, MOTORS, WIRING, BREAKER SIZES, AND EQUIPMENT NECESSARY TO ADAPT TO THE SERVICE AVAILABLE, THE REQUIREMENTS OF THE UTILITY COMPANY, LOCAL CODES OR THE SIZE OF HEATING, VENTILATING & AIR CONDITIONING EQUIPMENT SPECIFIED.
3.2 TELEPHONE INSTALLATION - N/A
3.3 INSTALLATION - GENERAL
A. COOPERATE WITH OTHER SECTIONS FOR THE PROPER EXECUTION OF THIS WORK. SUPPLY AND COOPERATE IN THE PLACEMENT OF INSERTS, SLEEVES AND OTHER EQUIPMENT TO BE INSTALLED IN MASONRY. CAREFULLY CUT NECESSARY HOLES FOR THE INSTALLATION OF EQUIPMENT AND PATCH IN SUCH A MANNER AS TO MATCH THE ORIGINAL WORK.
B. MAKE GROUND CONNECTION BETWEEN ALL APPARATUS, SIGNS AND CONDUIT AND THE WATER PIPING AS REQUIRED BY THE NATIONAL ELECTRICAL CODE AND ACCORDING TO THE REQUIREMENTS OF LOCAL AUTHORITIES.
C. MUSIC SYSTEM - SPEAKERS - N/A
3.4 CASH REGISTERS - N/A
3.6 TESTS
A. AFTER COMPLETE CONNECTIONS AND INSTALLATION OF ALL THE LESSEES OR FRANCHISE OWNER'S EQUIPMENT, TEST ALL WORK AND EQUIPMENT AS REQUIRED BY AUTHORITIES HAVING JURISDICTION, FURNISH ALL EQUIPMENT NECESSARY, PERSONNEL AND ELECTRICAL POWER. TEST THE ENTIRE INSTALLATION FOR SHORTS, GROUNDS AND OPEN CIRCUITS, AND CORRECT ALL DEFECTS BEFORE ACCEPTANCE OF THE WORK. ALL WORK SHALL BE DEMONSTRATED TO BE IN PROPER OPERATING CONDITION TO THE COMPLETE SATISFACTION OF THE FRANCHISE OWNER. INSTRUCT THE OWNER'S REPRESENTATIVES IN THE CARE AND OPERATION OF ALL APPARATUS AND EQUIPMENT FORMING THE INSTALLATION.
3.7 EMERGENCY LIGHTING - N/A
3.8 EXTERIOR AREA LIGHTING
A. FURNISH AND INSTALL THE EXTERIOR LIGHTING AS INDICATED BY SYMBOLS ON SITE DRAWING. POLE AND WEDGE SERIES POLE LIGHTS SHALL BE MANUFACTURED BY VILLA LIGHTING OR SECURITY LIGHTING SYSTEMS, INC. (SPECIFY VOLTAGE WHEN ORDERING). SEE ELECTRICAL PLANS FOR BUILDING LIGHTS.
B. FEATURES:
1. POLE - SQUARE STEEL POLE FINISHED WITH WEATHERPROOF RUST PREVENTATIVE PAINT. FOUR (4) GALVANIZED ANCHOR BOLTS WITH GALVANIZED NUTS AND WASHERS. METAL TEMPLATE, HAND HOLE, AND DECORATIVE ANCHOR BOLT COVER. VERIFY DIMENSIONS CONFORM TO ALL LOCAL CODE REQUIREMENTS AND RESTRICTIONS BEFORE PLACING ORDER.
2. FIXTURE - 400-WATT HIGH-PRESSURE SODIUM OR METAL HALIDE, DARK BRONZE OR BLACK FINISH. A COMPLETE MILL FINISHED ALUMINUM HOUSING WITH ACCESS TO LAMP AND BALLAST THROUGH HINGED DOOR ASSEMBLY. ONE-PIECE TEMPERED GLASS LENS AND OPTICAL SYSTEM FABRICATED OF POLISHED ALZAK ALUMINUM. ALSO INCLUDES ADJUSTABLE TENON ADAPTER AND INTEGRAL ADJUSTABLE LIGHT CUP OF SHIELD.

SECTION 31 1100 CLEARING AND GRUBBING	
<b>PART 1      GENERAL</b>	
1.1 SUMMARY	
A. SECTION INCLUDES:	1. REMOVAL OF SURFACE DEBRIS, PAVING AND CURBS.
	2. REMOVAL OF PLANT LIFE AND GRASS.
	3. GRUBBING ROOTS.
	4. TOPSOIL EXCAVATION.
B. RELATED SECTIONS:	1. SECTION 31 2200 - GRADING.
<b>PART 2      PRODUCTS</b>	
NOT APPLICABLE	
<b>PART 3      EXECUTION</b>	
3.1 SITE CLEARING	

A. REMOVE VEGETATION, DEBRIS, AND OBSTRUCTIONS FROM AREAS OF STRUCTURES, WALKS, PAVING AND PLANTING BEDS.
B. APPLY HERBICIDE TO REMAINING STUMPS AND PLANT LIFE TO INHIBIT GROWTH.
C. STRIP EXISTING TOPSOIL FROM AREAS OF STRUCTURES, WALKS, AND PAVING. STOCKPILE ON SITE FOR REUSE AS SPECIFIED IN SECTION 31 2200.
D. GRUB OUT ROOTS AND UNDERGROUND OBSTRUCTIONS TO MINIMUM DEPTH OF 12 INCHES.
E. REMOVE WASTE MATERIAL FROM SITE AS IT ACCUMULATES. COMPLY WITH APPLICABLE CODES AND ORDINANCES REGARDING WASTE TRANSPORTATION AND DISPOSAL.

**SECTION 31 2300  
EXCAVATION AND FILL**

**PART 1      GENERAL**

**1.1 SUMMARY**

**A. SECTION INCLUDES:**

1. EXCAVATING FOR STRUCTURES AND SITE COMPONENTS.
2. FILLING.
3. TRENCHING.
4. BACKFILLING.

**1.2 SYSTEM DESCRIPTION**

**A. LIMITS OF WORK: DO NOT EXTEND EARTHWORK BEYOND AREAS OF EXCAVATION OR CONSTRUCTION SHOWN ON DRAWINGS OR REASONABLY NECESSARY FOR PERFORMANCE OF WORK.**

**B. CONTRACTOR IS RESPONSIBLE FOR DESIGN OF TEMPORARY EARTH RETENTION SYSTEMS.**

**1.3 SUBMITTALS**

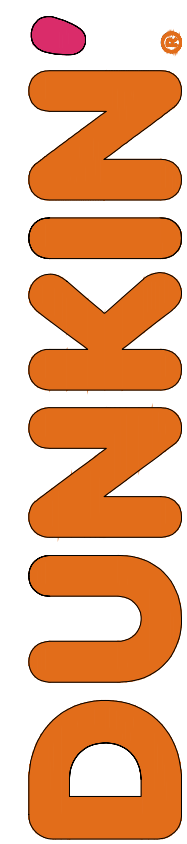
**A. SUSTAINABLE DESIGN SUBMITTALS:**

1. RESOURCE REUSE
2. REGIONAL MATERIALS.



	EXTERIOR WALL PAINT					
	CODE	MATERIAL	MANUFACTURER	PRODUCT #	DESCRIPTION / REMARKS	VENDOR CONTACTS
EXTERIOR FIBER CEMENT SIDING AND PAINT	PTE-01	PAINT	SHERWIN WILLIAMS	GRAY FINISH	SW 7019 "GAUNTLET GRAY" SHEEN: FLAT	PLACE ORDER WITH LOCAL SHERWIN WILLIAMS STORE FOR A STORE NEAR YOU CALL: 800-474-3794  HEATHER BOURGEOIS NATIONAL ACCOUNT EXECUTIVE O: 646-841-4412 EMAIL: HEATHER.R.BOURGEOIS@SHERWIN.COM
	PTE-02	PAINT	SHERWIN WILLIAMS	CHARCOAL FINISH	SW 7069 "IRON ORE" SHEEN: FLAT	
	PTE-04	PAINT	SHERWIN WILLIAMS	OFF WHITE FINISH	SW 7063 "NEBULOUS WHITE" SHEEN: FLAT	
	EXTERIOR FIBER-CEMENT EXTERIOR SIDINGAND PANELS					
	CODE	MATERIAL	MANUFACTURER	PRODUCT #	DESCRIPTION / REMARKS	VENDOR CONTACTS
EXTERIOR FIBER CEMENT SIDING AND PANELS	PS-03	FIBER CEMENT SIDING	WOODTONE	WOOD FINISH RUSTIC SERIES WOODTONE	COLOR:"HONEY GLAZE" WOOD PATTERN SURFACE: WOOD PATTERN PLANK DIMENSION: 8 1/4" X 12" X 5/16" THK WITH 6" SIDING EXPOSURE NOTE: NAILS TO MATCH WOOD FINISH	FOR WOODTONE PRODUCTS: LAURENCE TAYLOR, WOODTONE SALES REPRESENTATIVE PHONE: (604) 792-3680 CELL: (604) 798-2654 LAURENCET@WOODTONE.COM  TIM FOLSTER WOODTONE MANAGER, STRATEGIC ACCOUNTS PHONE: (604) 792-3680 CELL: (604) 845-9663 TIMF@WOODTONE.COM
	PS-04 LP	FIBER CEMENT PANEL	JAMES HARDIE	OFF WHITE FINISH LARGE FORMAT PANEL	COLOR:"ARCTIC WHITE" SURFACE: PRE-FINISHED REVEAL PANEL DIMENSION: (5/16" x 48"X96") WITH COLOR MATCHED TRIMS AND COLOR MATCHED SCREWS OR COLOR: "PRIMED FINISH" FIELD PAINT TO MATCH PTE-04	JEFF HARVEY 774-287-6278 JEFFERY.HARVEY@JAMESHARDIE.COM
	EXTERIOR METAL PAINTED COATINGS					
	CODE	MATERIAL	MANUFACTURER	PRODUCT #	DESCRIPTION / REMARKS	VENDOR CONTACTS
EXTERIOR METAL PAINTED COATINGS	PC-02	PAINTED COATING	MATTHEWS PAINT	CHARCOAL FINISH	COLOR: MP10269 DARK SLATE FINISH LVS SATIN V2.0	PLACE ORDER WITH LOCAL SHERWIN WILLIAMS STORE FOR A STORE NEAR YOU CALL: 800-474-3794  HEATHER BOURGEOIS NATIONAL ACCOUNT EXECUTIVE O: 646-841-4412 EMAIL: HEATHER.R.BOURGEOIS@SHERWIN.COM
		PAINTED COATING	SHERWIN WILLIAMS	CHARCOAL FINISH	SW 7069 "IRON ORE"	
		PAINTED COATING	POWDER COAT	CHARCOAL FINISH	SW 7069 "IRON ORE"	
	PC-04	PAINTED COATING	MATTHEWS PAINT	OFF WHITE FINISH	COLOR MATCH PMS COOL GREY 1C MAP ULTRA LOW V.O.C.	
		PAINTED COATING	SHERWIN WILLIAMS	OFF WHITE FINISH	SW 7063 "NEBULOUS WHITE"	
		PAINTED COATING	POWDER COAT	OFF WHITE FINISH	SW 7063 "NEBULOUS WHITE"	
	PC-12	PAINTED COATING	MATTHEWS PAINT	DD PINK FINISH	COLOR: MP79206 R161426 FINISH: LVS SATIN V1.0 OVER MP55898 WHITE BASECOAT	
		PAINTED COATING	SHERWIN WILLIAMS	DD PINK FINISH	COLOR MATCH PMS 7635C	
		PAINTED COATING	POWDER COAT	DD PINK FINISH	COLOR MATCH PMS 7635C	
	PC-13	PAINTED COATING	MATTHEWS PAINT	DD ORANGE FINISH	COLOR: MP79700 R161426 FINISH: LVS SATIN V1.0 OVER MP55898 WHITE BASECOAT	
		PAINTED COATING	SHERWIN WILLIAMS	DD ORANGE FINISH COLOR # 5059990	Blended At: Sherwin Williams Product Finishes, Lowell MA Product: LV3 - Genesis Low VOC Satin GT1039 Orange Toner 785.97g / 19gal GT1511 Low VOC Gloss Clear 529.21g / 12gal GT1043 Autumn Orange 194.04g / .05gal GT1011 Artic White 137.20g / .02gal GR1088 Reducer 442.38g / 1.9gal GT1510 Low VOC Flat Clear 2157.21g / 49gal	
					COLOR MATCH PMS 3664C	
					COLOR MATCH PMS 3564C	
					COLOR MATCH PMS 3564C	
		EXTERIOR METAL TRIM				
	CODE	MATERIAL	MANUFACTURER	PRODUCT #	DESCRIPTION / REMARKS	VENDOR CONTACTS
EXTERIOR METAL TRIM	TR-01	METAL	TAMLYN	EXTRUDED METAL CHANNEL USED AT TOWER ELEMENT	PINK ACCENT BAND SEE SF03 (PINK)	TAMLYN - XTREME TRIM IAN DANIELS 713-446-3075; idaniels@tamlyn.com  OR  HORACIO'S SHEET METAL MICHAEL TAVERES P: 508-985-9940; mke@horacios.com OR  AGI RANDY KERR 800-877-3810 EXT. 3248; rkerr@agi.net
		METAL	HORACIO			
		METAL	AGI			
	TR-02	METAL	TAMLYN	EXTRUDED METAL CHANNEL USED AT TOWER ELEMENT	OFF WHITE ACCENT BAND SEE SF04 (WHITE)	
		METAL	HORACIO			
		METAL	AGI			
	TR-04	METAL	TAMLYN	(XOCLP34) OUTSIDE CORNER TRIM. USED AT TOWER ELEMENT	TO MATCH FIBER CEMENT LAP SIDING PS-03	JEFF HARVEY 774-287-6278 JEFFERY.HARVEY@JAMESHARDIE.COM
	TR-05	METAL	TAMLYN	(XS516) BOTTOM "STARTER" TRIM. USED AT TOWER ELEMENT	CLEAR ANODIZED	
	TR-06	METAL	TAMLYN	(JMH34) VERTICAL TERMINATION TRIM-TYP. USED AT TOWER ELEMENT	FACTORY FINISH TO MATCH FIBER CEMENT LAP SIDING PS-03	
	TR-07	METAL	TAMLYN	(JMH716) TOP TRIM USED AT TOWER ELEMENT	FACTORY FINISH TO MATCH FIBER CEMENT LAP SIDING PS-03	
	TR-08	METAL	JAMES HARDIE	JH SURROUND VERTICAL TRIM	FINISH: FACTORY CLEAR ANODIZED 16 GA TRIM AVAILABLE IN 8'-0" LENGTHS. USED WITH JAMES HARDIE REVEAL PANELS	
TR-09	METAL	JAMES HARDIE	JH SURROUND HORIZONTAL TRIM	FINISH: FACTORY CLEAR ANODIZED 16 GA TRIM AVAILABLE IN 8'-0" LENGTHS. USED WITH JAMES HARDIE REVEAL PANELS		
TR-10	METAL	JAMES HARDIE	JH SURROUND OUTSIDE CORNER TRIM	FINISH: FACTORY CLEAR ANODIZED 16 GA TRIM AVAILABLE IN 8'-0" LENGTHS. USED WITH JAMES HARDIE REVEAL PANELS		
TR-11	METAL	JAMES HARDIE	JH SURROUND J-CHANNEL TRIM	FINISH: FACTORY CLEAR ANODIZED 16 GA TRIM AVAILABLE IN 8'-0" LENGTHS. USED WITH JAMES HARDIE REVEAL PANELS. NOTE: CAN BE USED VERTICALLY & HORIZONTALLY @ PENETRATION OR TRANSITION W/ OTHER MATERIALS		

		TRAFFIC STRIPING PAINT					
		CODE	MATERIAL	MANUFACTURER	PRODUCT #	DESCRIPTION	VENDOR CONTACTS
TRAFFIC STRIPING PAINT	<u>TP-01</u>	PAINT	SHERWIN WILLIAMS	PRO PARK	"WHITE": B97WD2434		PLACE ORDER WITH LOCAL SHERWIN WILLIAMS STORE FOR A STORE NEAR YOU CALL: 800-474-3794
	<u>TP-02</u>	PAINT	SHERWIN WILLIAMS	PRO PARK	"BLUE": B97LD2022		
	<u>TP-03</u>	PAINT	SHERWIN WILLIAMS	PRO PARK	"YELLOW": B97YD2467		
	<u>TP-04</u>	PAINT	SHERWIN WILLIAMS	PRO PARK	"ORANGE": CUSTOM MIX B97YD2467 CCE* COLORANT OZ 32 64 128 W1-WHITE        - 6 1 --- R4-NEW RED     4 53 1 --- Y3-DEEP GOLD   - 06 - 1		HEATHER BOURGEOIS NATIONAL ACCOUNT EXECUTIVE O: 646-841-4412 EMAIL: HEATHER.R.BOURGEOIS@SHERWIN.COM
	<u>TP-05</u>	PAINT	SHERWIN WILLIAMS	PRO PARK	"PINK": CUSTOM MIX B97RD2012 CEE* COLORANT OZ 32 64 128 W1-WHITE        6 -- -- L1-BLUE         - 6 -- --		



ALL DRAWINGS, SPECIFICATIONS AND PLANS ARE INSTRUMENTS OF SERVICE. THEREFORE ARE PROPERTY OF MRV ARCHITECTS, INC. THEY MAY NOT BE REUSED, COPIED OR REPRODUCED WITHOUT PERMISSION AND EXPRESS WRITTEN CONSENT OF MRV ARCHITECTS

REVISION	DESCRIPTION	ISSUE DATES	DRAWN	EV
1		-		
2		-	CHECKED	MW
3		-		
4		-	DATE	08-15-24
5		-		
6		-		
7		-	PROJECT NO	24042
8		-		
9		-		
10		-		
11		-		
12		-		
13		-		
14		-		
15		-		
16		-		
17		-		
18		-		
19		-		
20		-		
21		-		
22		-		
23		-		
24		-		
25		-		
26		-		
27		-		
28		-		
29		-		
30		-		
31		-		
32		-		
33		-		
34		-		
35		-		
36		-		
37		-		
38		-		
39		-		
40		-		
41		-		
42		-		
43		-		
44		-		
45		-		
46		-		
47		-		
48		-		
49		-		
50		-		
51		-		
52		-		
53		-		
54		-		
55		-		
56		-		
57		-		
58		-		
59		-		
60		-		
61		-		
62		-		
63		-		
64		-		
65		-		
66		-		
67		-		
68		-		
69		-		
70		-		
71		-		
72		-		
73		-		
74		-		
75		-		
76		-		
77		-		
78		-		
79		-		
80		-		
81		-		
82		-		
83		-		
84		-		
85		-		
86		-		
87		-		
88		-		
89		-		
90		-		
91		-		
92		-		
93		-		
94		-		
95		-		
96		-		
97		-		
98		-		
99		-		
100		-		

MASTER FINISH SCHEDULE	
DUNKIN'	
950 MAIN AVE. A	
DE PERE, WI 54115	
PC# 352721	

SHEET

# GN-2.0

1. FOR COMPLETE NATIONAL ACCOUNTS SOURCE INFORMATION, REFER TO THE DUNKIN' NATIONAL ACCOUNT WEB SITE (<http://extranet.dunkinbrands.com>). TO OBTAIN A USER NAME AND PASSWORD PLEASE CONSULT YOUR LOCAL CONSTRUCTION MANAGER.  
2. CONTRACTOR TO IDENTIFY ONESELF AS WORKING WITH DUNKIN' WHEN ORDERING FROM NATIONAL ACCOUNTS.



Allen Industries	Allen Industries	Keith Whitley	919-410-1234	keith.whitley@allenindustries.com
Bollard Covers	Post Guard	Michelle Mobbs	248-663-9115	michelle@postguard.com
Bollard Covers (orange)	Ideal Shield	Bindu Abraham or Richard Popp	Bindu 888-308-7290 / Rich 248-219-2907	BAbraham@idealsield.com or rpopp@idealsield.com
Coming Soon Banners	LSM Now	Megan Buckley	1-855-576-6669	lsmnow@weldmedia.com
Door Handles (DD and BR)	Trimco	Anthony Mastroianni	410-804-5070	amastroianni@trimcohardware.com
Drive Thru Stencil	DGS Retail	Karen McCue	508-337-2990 / 508-337-5040	dgsretail.com
Drive Thru Timers	Acrelec (Formerly Hyperactive)	Kevin Donohue	O 412-960-4116	kevin.donohue@acrelec.com
Exterior Fiber-Cement Siding and Panels	James Hardie	Jeff Harvey	774-287-6278	jeffery.harvey@jameshardie.com
Exterior Finishes	Nichiha	Scott Landi/Matt Stephenson	678-296-9537	dunkindonuts@nichiha.com mstephenson@nichiha.com
Exterior Finishes	Woodtone	Tim Foster	800-663-9844 X1122	timf@woodtone.com
Exterior Metal (Building Band/Canopy)	Uni-Structures, Inc.	Dana Fredericks	678-974-1773	d.fredericks@unistructures.com
Exterior Metal (Building Band/Canopy)	LSI Industries	Vicki Mancill	M713-744-4178	vicki.mancill@lsi-industries.com
Extruded Metal Channel at Exterior	Horacio's Sheet Metal	Michael Tavares	508-985-9940 / 508-985-9965	mike@horacios.com
Light Fixtures	Villa Lighting	Deanna McClanahan	1-800-325-0963 x 508	Deanna.McClanahan@villalighting.com
Light Fixtures	Specialty Lighting	Anush Kazarian	O:860-767-0110 X252/M:508-922-0786+G100	anush.kazarian@sslighting.com
Lighting Fixtures: Interior & Exterior	Light Check Services	Alan Safer	401-714-5567	alan@lightcheck.com
Metal Trim (Branded)	Tamlyn	Ian Daniels	713-446-3075	idaniels@tamlyn.com
Outdoor Patio Furniture	Florida Seating	Kal Khalaf	727-540-9802	kal@floridaseating.com - sales@floridaseating.com
Outdoor Patio Furniture	HJC	David Lightfoot	479-366-0642	david.lightfoot@hjinc.com
Outdoor Patio Furniture	Wasau Tile	Caitlin Gustafson	(715) 241-0311	cgustafson@wasautile.com
Outdoor Patio Furniture	24/7			
Outdoor Patio Furniture	Plantation Prestige			
Outdoor Patio Furniture (BR Only)	Union Office Interiors	Douglas Bumstead	P: 978-752-1830 F: 1-781-628-1020	Dbumstead@unionoffice.com
Outdoor Patio Furniture (Dunkin' and BR)	Wabash			
Outside Furniture: (Light Weight)	Key Office Interiors	Douglas Bumstead	857-991-1376 / 617-439-0322	dunkinorders@keyofficeinteriors.com
Paint	Benjamin Moore	Stacey White	857-250-7395	
Paint	Sherwin Williams	Jim Cooley	M: 617-595-7126	James.cooley@sherwin.com
Pavement Stencils	Pavement Stencil Company	Calvin Bell	800.250.5547	stencils@pavementstencil.com
Sign Manufacturer	AGI	Jeff Ogle	(865)771-5676	Dunkinbrands@agi.net
Sign Manufacturer	Everbrite	Daniel Kleiman / Nick Bailey	804-456-8121 / C: 414-207-2353	dunkinbrands@everbrite.com / nbailey@everbrite.com
Sign Manufacturer	Persona Signs	Samantha Fieber	800-843-9888 Ext 304	stieber@personasigns.com
Sign Manufacturer	Poyant Signs	Bill Gavigan	C:860-324-1353	bgavigan@poyantsigns.com
Sign Manufacturer	Sign Resource	Ken Siegert	810-241-0272	ksiegert@signresource.com
Store Graphics	DGS Retail	Karen McCue	508-337-2990 / 508-337-5040	karenmccue@dgsretail.com
Umbrellas	East Coast Umbrellas	Nicole Locklear	919-975-7414	umbrellas@eastcoastumbrella.com umbrellas@eastcoastumbrella.com /
Umbrellas & Umbrella Stands	East Coast Umbrellas	Nikole Locklear	919-975-7414	nicole@eastcoastumbrella.com
Umbrellas & Umbrella Stands	Tuuci	Frank Munoz Martin	305-636-7890	fmartin@Tuuci.com
Umbrellas & Umbrella Stands	24/7			
Video Loss Prevention Surveillance	March Networks	Graham Shelton	909-622-4899	Gshelton@marchproducts.com
Video Loss Prevention Surveillance - DTIQ	DTIQ	Sharon Costanza	954-649-0951	scostanza@dtiq.com

		<u><b>SITE REQUIREMENTS</b></u>						
		ELEMENT	RESPONSIBILITY TO:			GENERAL CONTRACTORS RESPONSIBILITIES	NOTES	
			PURCHASE	PROVIDE	INSTALL			
<b>SITE REQUIREMENTS</b>	BOLLARD COVERS	<b>GC</b>	<b>GC</b>	<b>GC</b>	INSTALL NEW COVER OVER EXISTING BOLLARDS.	N/A		
	DIRECTIONAL SIGNAGE	O	EP	SV	PROVIDE ALTERNATIVE PRICING: CAST NEW CONCRETE FOUNDATION AS REQ'D IF THE OWNER CHOOSES TO UTILIZE THE BRANDS NEW, LARGER SIGNAGE, REUSE EXISTING ELECTRICAL CONNECTION	N/A		
	DRIVE-THRU GROUND LOOPS	O	O	<b>GC</b>	VERIFY CONDITION OF EXISTING EQUIPMENT	N/A		
	DRIVE-THRU ELEMENT ASPHALT PAINTING	<b>GC</b>	EP	<b>GC</b>	DRIVE-THRU STRIPPING AND GRAPHICS TO BE PAINTED AT SPECIFIED LOCATIONS	STENCILS TO BE PROVIDED BY DGS RETAIL FOR DRIVE-THRU GRAPHICS. REFER TO NATIONAL ACCOUNTS. SEE DGS.		
	DRIVE-THRU MENU BOARD / SPEAKER ORDER POST	O	EP	<b>GC</b>	NEW EQUIPMENT TO BE INSTALLED AT THE EXISTING CONCRETE BASE. UTILIZE EXISTING ELECTRICAL CONNECTIONS. PROVIDE DATA CONNECTION AS REQ'D TO DIGITAL MENU BOARD.	N/A		
	HEIGHT LIMITATION BAR	O	EP	SV	PROVIDE ALTERNATIVE PRICING: CAST NEW CONCRETE FOUNDATION(S) AS REQ'D.	N/A		
	PYLON SIGNAGE	O	EP	SV	COORDINATE WITH OWNER FOR REMOVAL OF EXISTING SIGNAGE CABINET FOR NEW EQUIPMENT.	N/A		

5105 TOLLVIEW DR., SUITE 200  
ROLLING MEADOWS, IL 60007

ALL DRAWINGS, SPECIFICATIONS AND PLANS ARE INSTRUMENTS OF SERVICE. THEREFORE ARE PROPERTY OF MRV ARCHITECTS, INC. THEY MAY NOT BE REUSED, COPIED OR REPRODUCED WITHOUT PERMISSION AND EXPRESS WRITTEN CONSENT OF MRV ARCHITECTS

REVISION	DESCRIPTION	ISSUE DATES	DRAWN	EV
1		1		
2		2		
3		3		
4		4	CHECKED	MV
5		5		
6		6	DATE	08-15-24
7		7		
8		8		
9		9		
10		10	PROJECT NO	24042
11		11		
12		12		
13		13		
14		14		
15		15		
16		16		
17		17		
18		18		
19		19		
20		20		
21		21		
22		22		
23		23		
24		24		
25		25		
26		26		
27		27		
28		28		
29		29		
30		30		
31		31		
32		32		
33		33		
34		34		
35		35		
36		36		
37		37		
38		38		
39		39		
40		40		
41		41		
42		42		
43		43		
44		44		
45		45		
46		46		
47		47		
48		48		
49		49		
50		50		
51		51		
52		52		
53		53		
54		54		
55		55		
56		56		
57		57		
58		58		
59		59		
60		60		
61		61		
62		62		
63		63		
64		64		
65		65		
66		66		
67		67		
68		68		
69		69		
70		70		
71		71		
72		72		
73		73		
74		74		
75		75		
76		76		
77		77		
78		78		
79		79		
80		80		
81		81		
82		82		
83		83		
84		84		
85		85		
86		86		
87		87		
88		88		
89		89		
90		90		
91		91		
92		92		
93		93		
94		94		
95		95		
96		96		
97		97		
98		98		
99		99		
100		100		

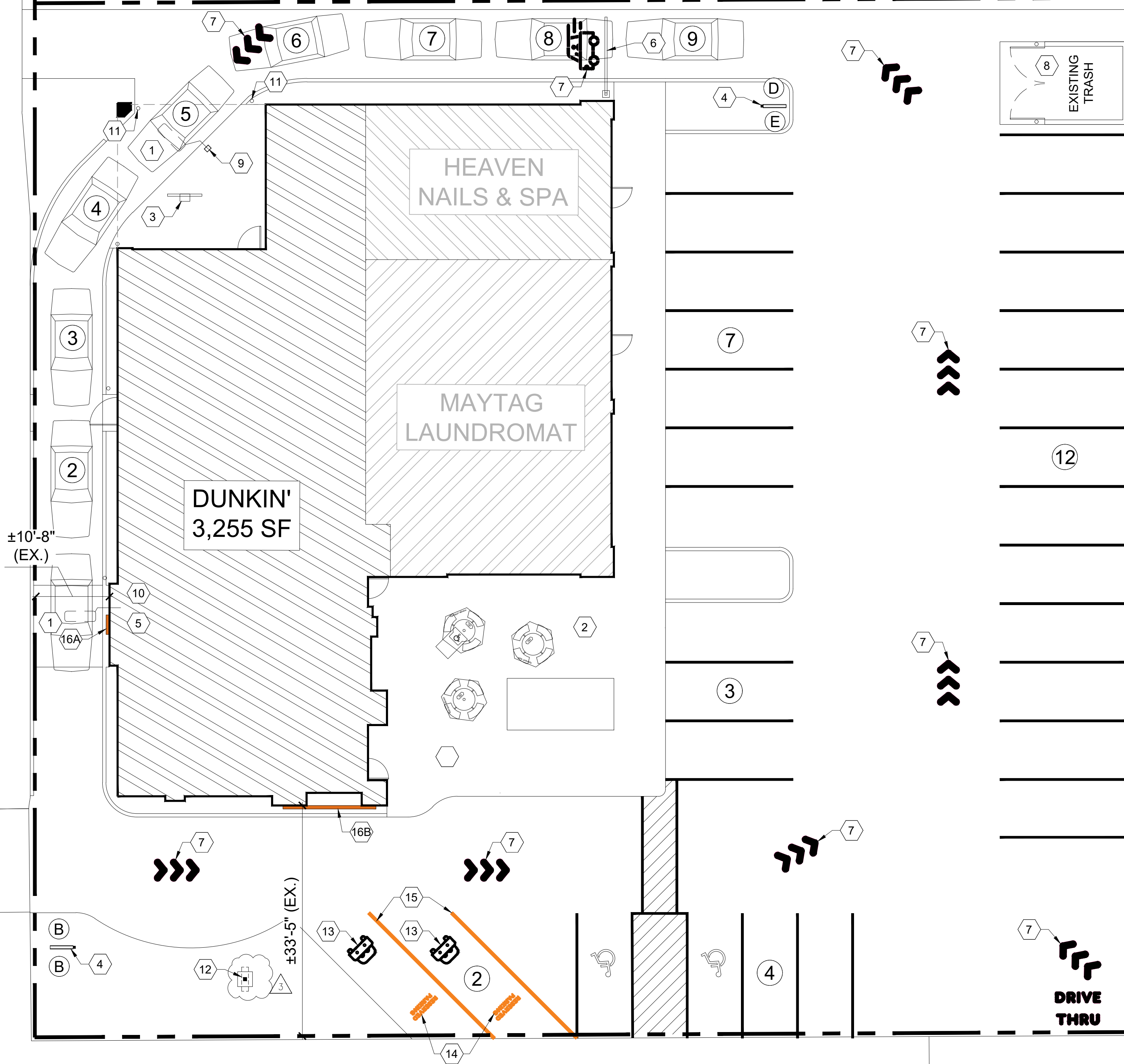
PC# 352721

SHEET

# GN-3.0



N. 10th ST.



MAIN AVE.

GENERAL NOTES

1. REFER TO ELECTRICAL DRAWINGS FOR FURTHER INFORMATION ON CONDUIT LOCATIONS AND QUANTITY CORRESPONDING TO EACH DRIVE THRU SET UP OPTION. G.C. TO PROVIDE PVC CONDUIT FOR ALL NEW LOCATIONS, REFER TO ELECTRICAL DRAWING FOR ADDITIONAL INFORMATION ON LOOP REQUIREMENTS
2. REFERENCE TO MASTER SCHEDULE FOR TRAFFIC STRIPING PAINT.
3. REFER TO CONSTRUCTION SPECIFICATIONS SHEETS AND DUNKIN' WEBSITE FOR FURTHER INFORMATION; <http://extranet.dunkinbrands.com>
4. GC TO VERIFY OPERATING CONATION OF ALL ELECTRICAL EQUIPMENT/ CONNECTIONS PRIOR TO AT START AND END OF PROJECT; SUCH AS SIGNAGE, EXTERIOR BUILDING AND SITE LIGHTING, AND EXTERIOR EQUIPMENT CONNECTIONS. GC TO NOTIFY OWNER OF ITEMS OUTSIDE SCOPE OF WORK PRIOR MAKING ANY ADJUSTMENTS.
5. GC TO VERIFY THAT ADA PARKING STALLS AND AISLE, SIDEWALKS, OUTDOOR PATIO, AND POSSIBLE ADA PATH OF TRAVELS ARE COMPLIANT WITH LOCAL ACCESSIBILITY CODES. INFORM OWNER IF THERE ARE AN CONDITIONS THAT MAY NEED TO BE ADDRESSED PRIOR TO MAKING ADJUSTMENTS.

SITE NOTES

1. EXISTING CONC. PAD W/ EXISTING GROUND LOOPS TO REMAIN; TOP OF SLAB SHOULD BE FLUSH WITH ADJACENT PAVEMENT SURFACE. PATCH AND REPAIR AS REQD. GC TO VERIFY OPERATING CONDITION OF EXISTING GROUND LOOPS
2. EXISTING CONCRETE OUTDOOR PATIO. OWNER TO COORDINATE PURCHASE AND DELIVERY OF EXTERIOR FURNITURE TO THE SITE.
3. REMOVE AND DISPOSE OF EXISTING MENU BOARD EQUIPMENT FOR INSTALLATION OF NEW DIGITAL MENU BOARD; REFER TO SHEET SP-1.1. GC TO VERIFY THAT EXISTING CONCRETE BASE AND ELECTRICAL CONNECTIONS CAN BE UTILIZED FOR NEW EQUIPMENT; AS WELL PROVIDE DATA CONNECTION AS REQD. EQUIPMENT TO BE INSTALLED SO ITS ANGLED 30° TO ON COMING TRAFFIC.
4. EXISTING DIRECTIONAL SIGNAGE TO BE REFACED WITH THE BRAND'S LATEST SIGNAGE PANELS; REFER TO SHEET SP-1.1 GC TO TOUCH UP PAINT OF EXISTING SIGNAGE POLE AS REQD IN THE FIELD [EC-13]. VENDOR TO VERIFY SIZE OF EXISTING SIGNAGE PANELS IN FIELD; REFER TO SIGNAGE VENDOR'S PACKAGE FOR FURTHER INFORMATION.
5. EXISTING DRIVE THRU WINDOW TO REMAIN
6. REMOVE AND DISPOSE OF EXISTING HEIGHT LIMITATION BAR FOR INSTALLATION OF NEW EQUIPMENT; REFER TO SHEET SP-1.1. GC TO VERIFY THAT EXISTING CONCRETE BASE CAN BE UTILIZED FOR NEW EQUIPMENT
7. DRIVE THRU GRAPHIC (SEE NATL. ACCOUNTS), PAINT [TP-01] WHITE
8. EXISTING TRASH ENCLOSURE AND HEAVY DUTY CONCRETE PAD TO REMAIN. PATCH AND REPAIR AS REQUIRED.
9. REMOVE AND DISPOSE OF EXISTING ORDER SPEAKER POST EQUIPMENT FOR INSTALLATION OF NEW EQUIPMENT; REFER TO SHEET SP-1.1. GC TO VERIFY THAT EXISTING CONCRETE BASE AND ELECTRICAL CONNECTIONS CAN BE UTILIZED FOR NEW EQUIPMENT
10. EXISTING HOME RUN CONDUIT TO DRIVE THRU TIMER MONITOR ADJACENT TO DRIVE THRU WINDOW TO REMAIN.
11. EXISTING CONCRETE FILLED BOLLARDS ON SITE TO RECEIVE NEW COVER(SEE NATL. ACCOUNTS)
12. DUNKIN'S PORTION OF EXISTING PYLON SIGNAGES TO BE REFACED TO REFLECT THE BRANDS NEW IMAGE. REFER TO DETAIL #6/ SP-1.0 FOR FURTHER INFORMATION. OWNER TO COORDINATE WITH GC/ SIGNAGE VENDOR/ CITY TO ENSURE NEW SIGNAGE CABINET DOES NOT CONFLICT WITH ADJACENT DRIVE AISLE, OVERHEAD POWER LINES, AND POSSIBLE EASEMENTS PRIOR TO CONSTRUCTION AND ORDERING MATERIALS
17. DUNKIN' RESERVED PARKING SPACE GRAPHIC (SEE NATL. ACCOUNTS), PAINT [TP-01] WHITE
18. DUNKIN' RESERVED PARKING SPACE GRAPHIC (SEE NATL. ACCOUNTS), PAINT [TP-04] ORANGE
19. 6" LINE STRIPING PAINT [TP-04] ORANGE
20. NEW WALL SIGNAGE TO MATCH SURFACE AREA OF EXISTING. REFER TO EXTERIOR ELEVATIONS FOR FURTHER INFORMATION:
  - 16A. WALL SIGNAGE INSTALLED 15'-10" AFF. SURFACE AREA: 11.46 SF
  - 16B. WALL SIGNAGE INSTALLED 17'-8" AFF. SURFACE AREA: 33.66 SF

DUNKIN'

MRV

ARCHITECTS, INC.

5105 TOLLVIEW DR., SUITE 201  
ROLLING MEADOWS, IL 60008

ALL DRAWINGS, SPECIFICATIONS AND PLANS ARE INSTRUMENTS OF SERVICE. THEREFORE ARE PROPERTY OF MRV ARCHITECTS, INC. THEY MAY NOT BE REUSED, COPIED OR REPRODUCED WITHOUT PERMISSION AND EXPRESS WRITTEN CONSENT OF MRV ARCHITECTS

REVISION	DESCRIPTION	ISSUE DATES	DRAWN	EV
1	SITE PLAN REVIEW REVISION #1	10-06-24	DRAWN	EV
2	SITE PLAN REVIEW REVISION #2	10-11-24	CHECKED	MV
3	SITE PLAN REVIEW REVISION #3	10-15-24	DATE	08-15-24
			PROJECT No	24042

SITE PLAN & NOTES

DUNKIN'  
950 MAIN AVE. A  
DE PERE, WI 54115

PC# 352721

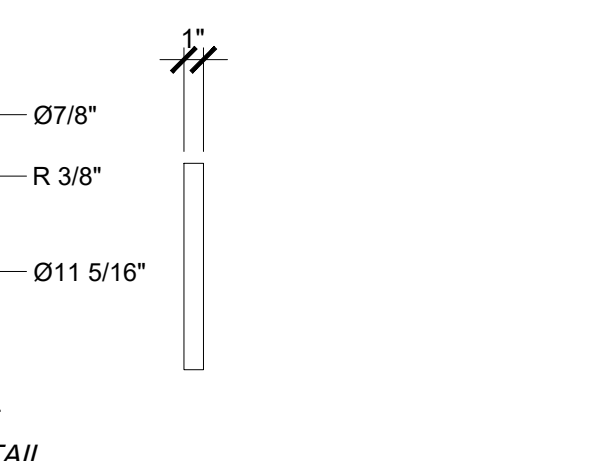
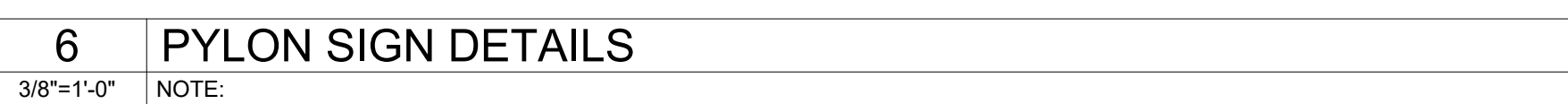
SHEET

SP-1.0

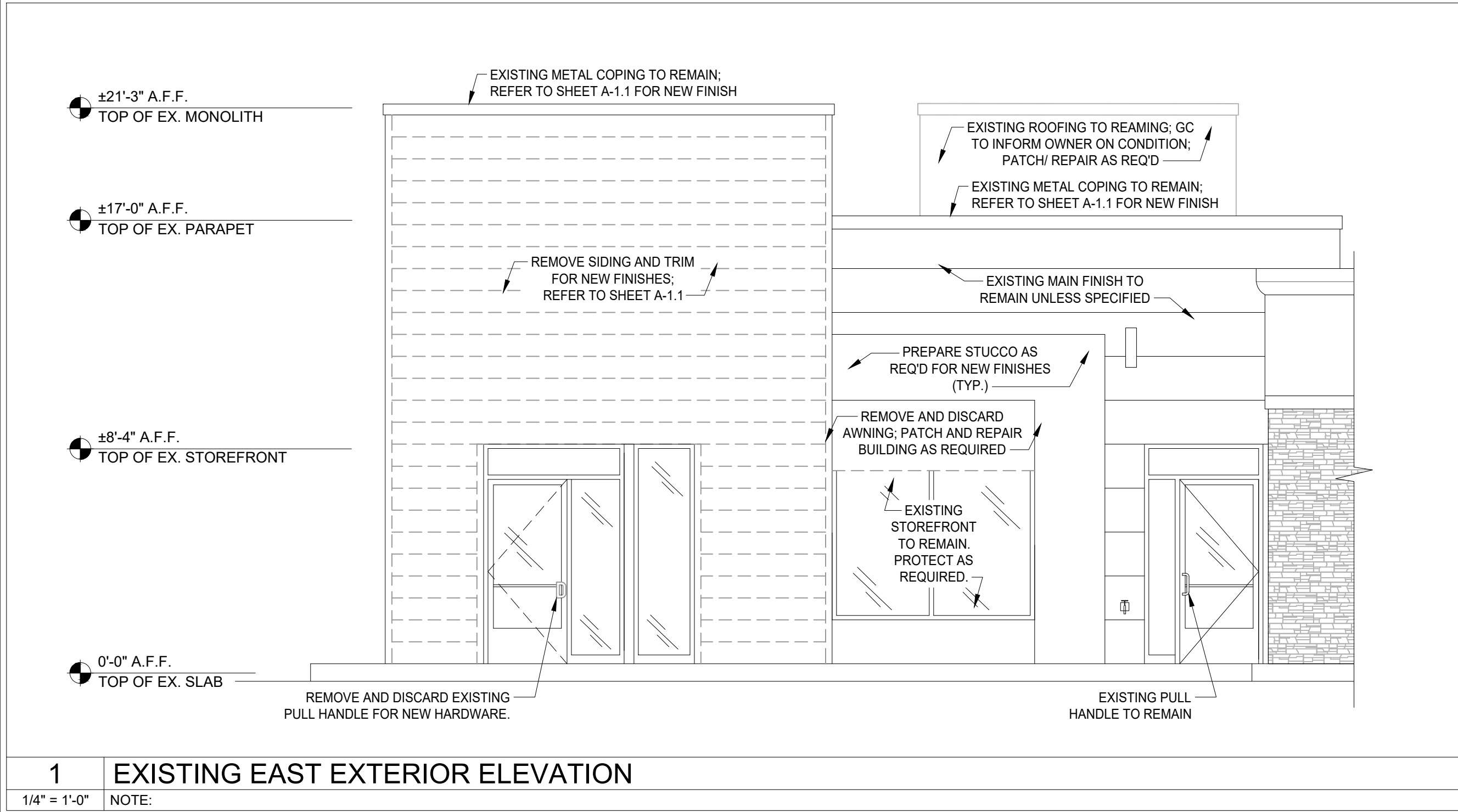




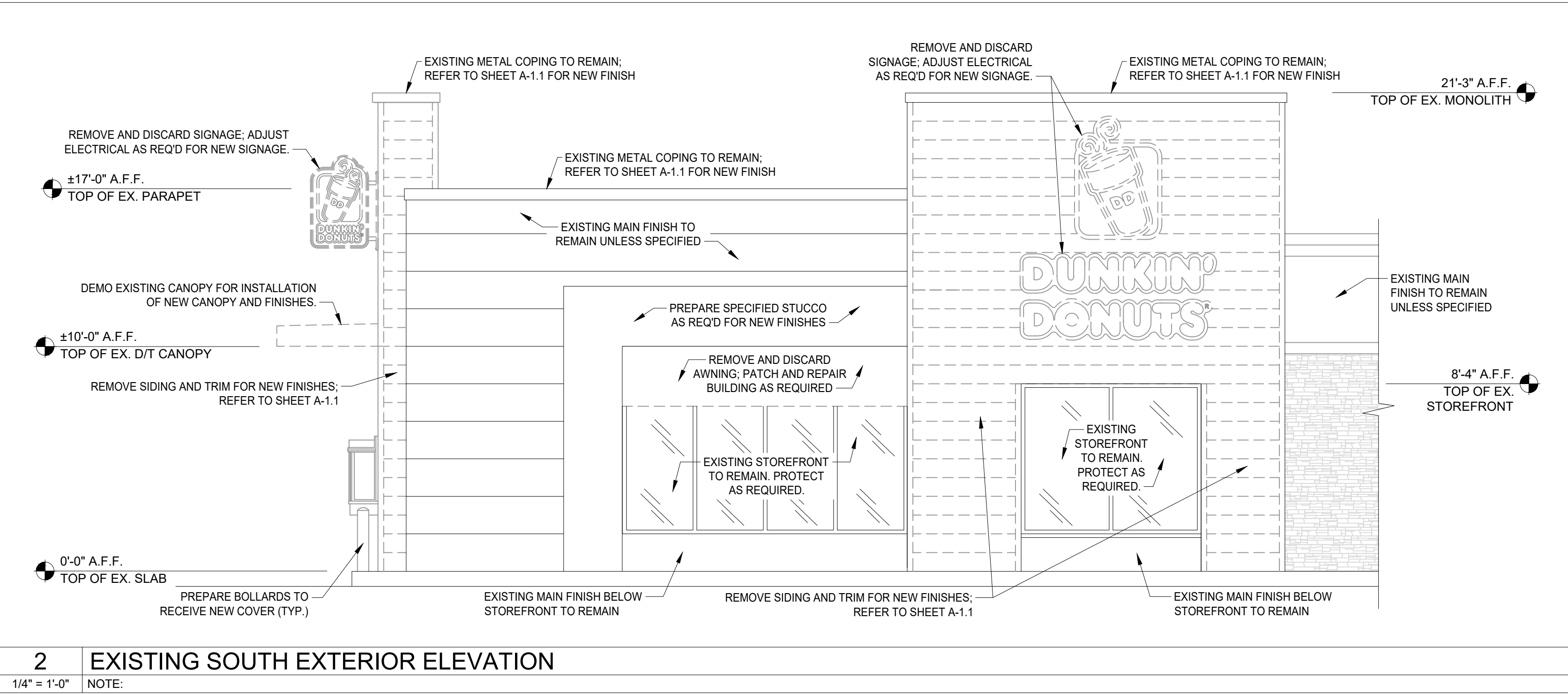
1. REFER TO ELECTRICAL DRAWINGS FOR FURTHER INFORMATION ON CONDUIT LOCATIONS AND QUANTITY CORRESPONDING TO EACH DRIVE THRU SET UP OPTION. G.C. TO PROVIDE PVC CONDUIT FOR ALL NEW LOCATIONS, REFER TO ELECTRICAL DRAWING FOR ADDITIONAL INFORMATION ON LOOP REQUIREMENTS
2. REFERENCE TO MASTER SCHEDULE FOR TRAFFIC STRIPING PAINT.
3. REFER TO CONSTRUCTION SPECIFICATIONS SHEETS AND DUNKIN' WEBSITE FOR FURTHER INFORMATION; <http://extranet.dunkinbrands.com>



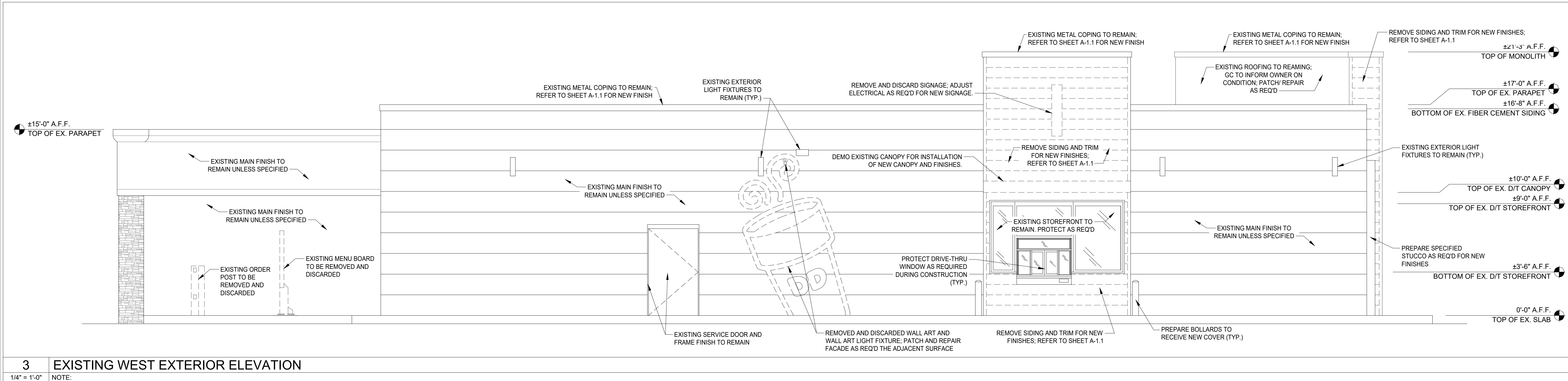




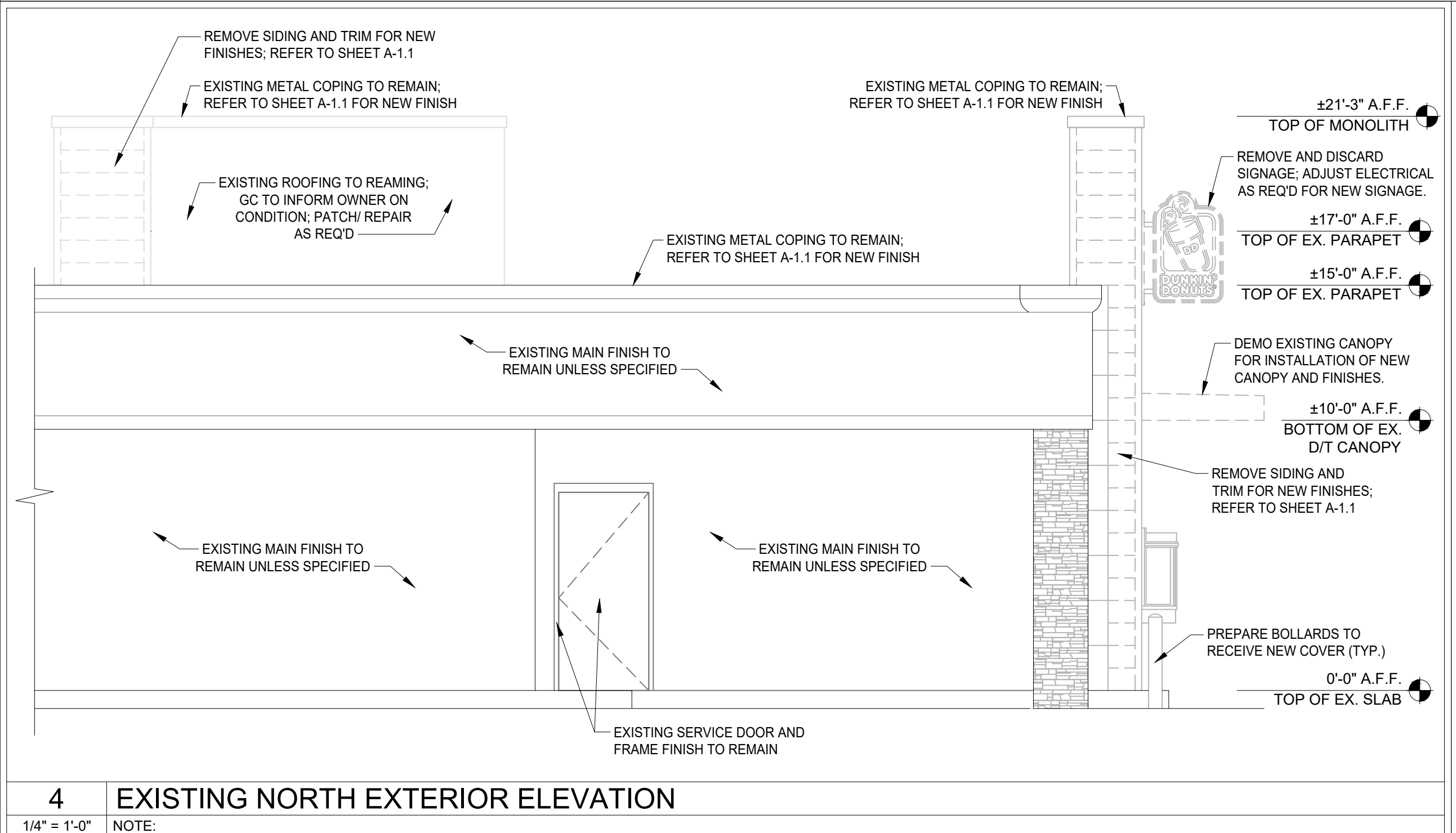
1 EXISTING EAST EXTERIOR ELEVATION  
1/4" = 1'-0" NOTE:



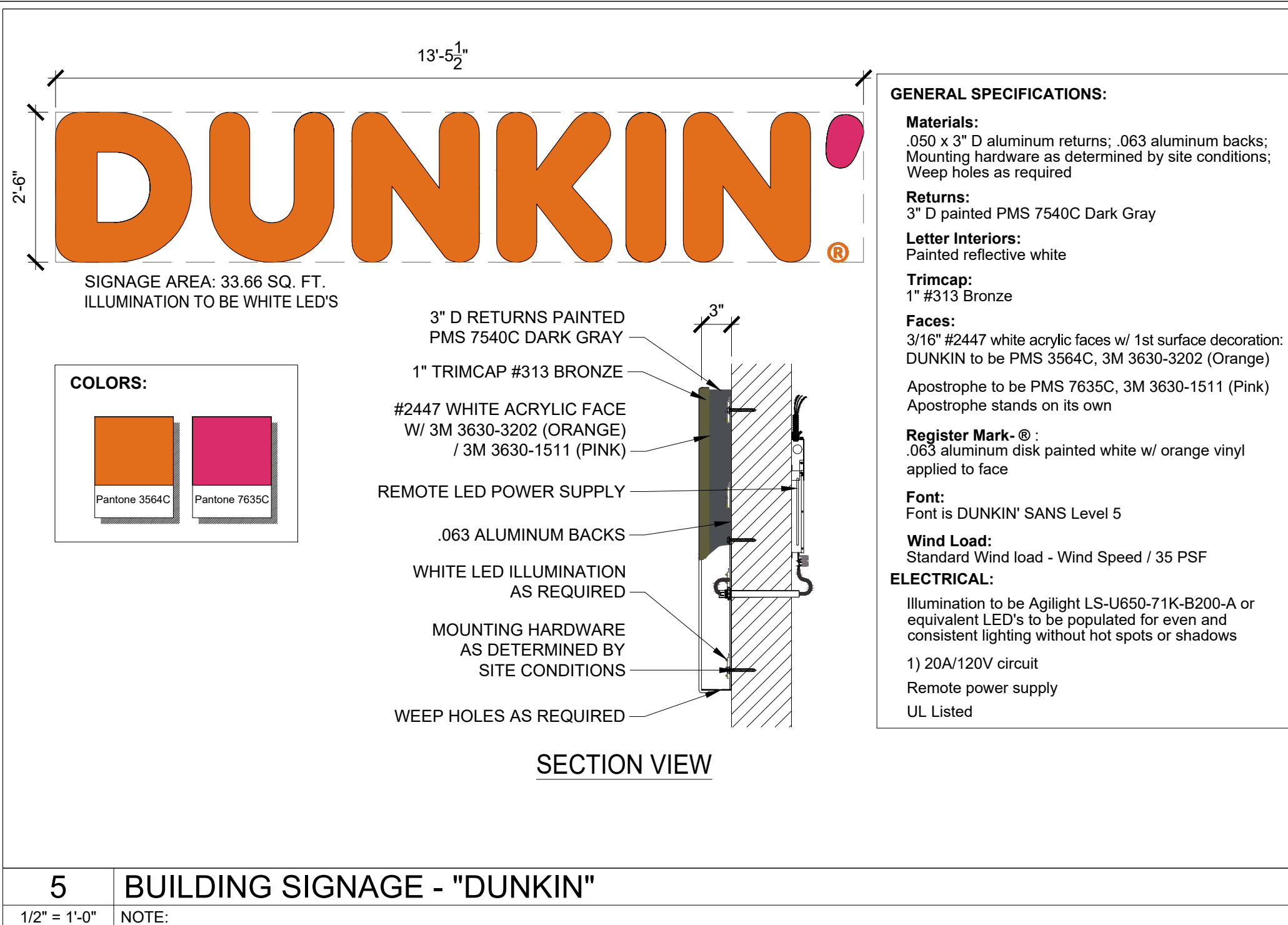
2 EXISTING SOUTH EXTERIOR ELEVATION  
1/4" = 1'-0" NOTE:



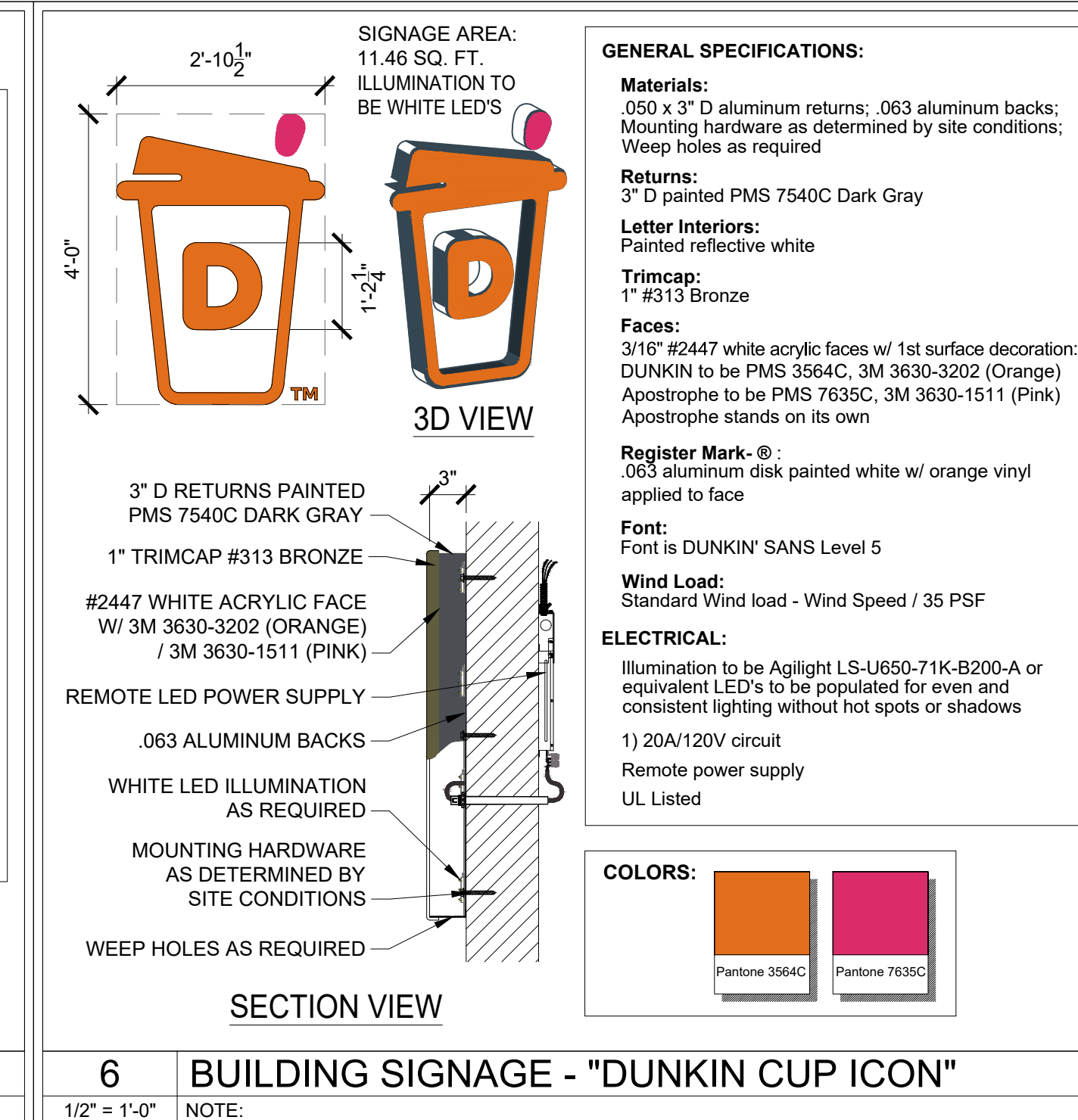
3 EXISTING WEST EXTERIOR ELEVATION  
1/4" = 1'-0" NOTE:



4 EXISTING NORTH EXTERIOR ELEVATION  
1/4" = 1'-0" NOTE:



5 BUILDING SIGNAGE - "DUNKIN"  
1/2" = 1'-0" NOTE:



6 BUILDING SIGNAGE - "DUNKIN CUP ICON"  
1/2" = 1'-0" NOTE:



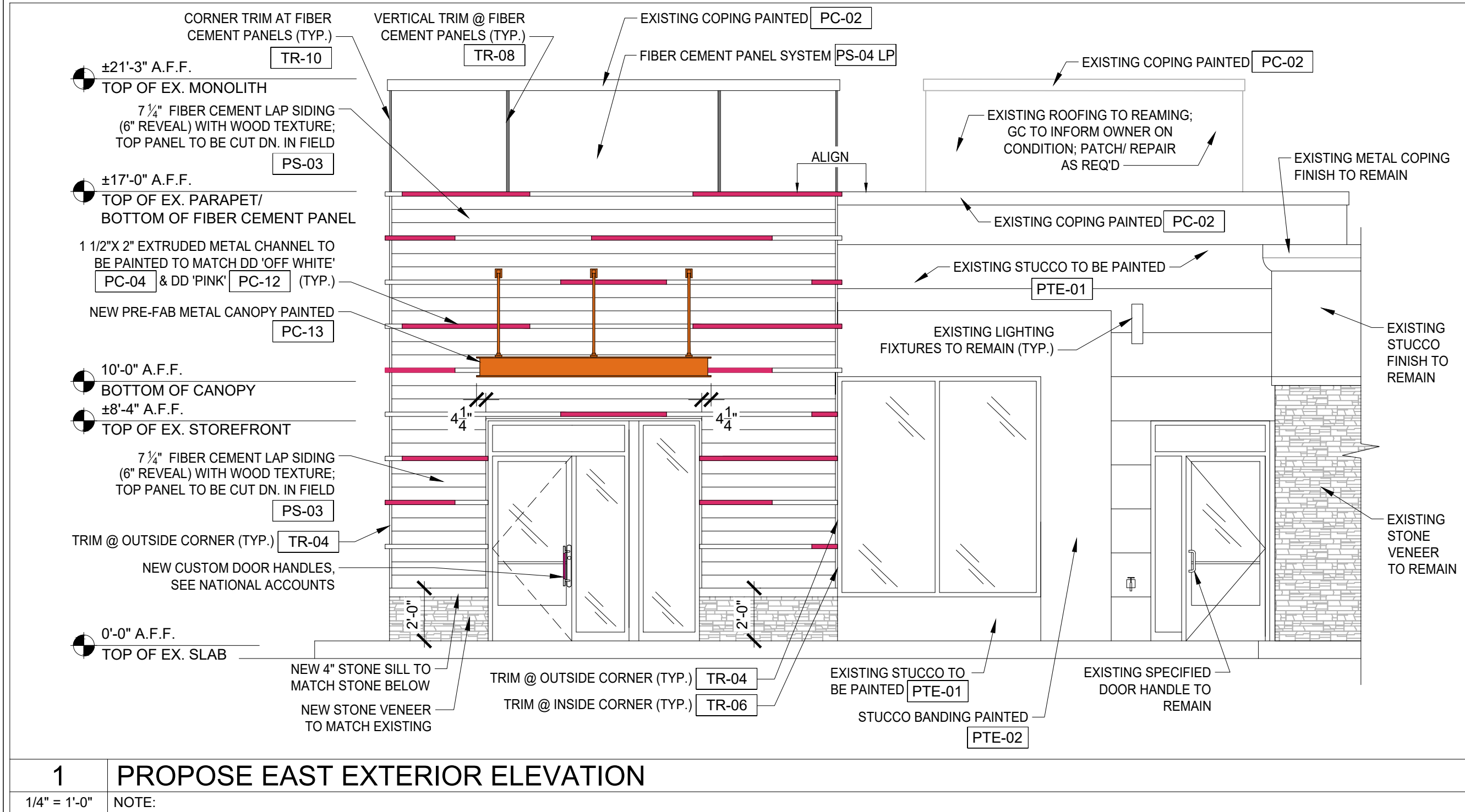
MRV  
ARCHITECTS, INC.  
5105 TOLLVIEW DR., SUITE 201  
ROLLING MEADOWS, IL 60008

EV	MV	08-15-24	24042
DRAWN	CHECKED	DATE	PROJECT NO
.	.	.	.
ISSUE DATES	.	.	.
DESCRIPTION	.	.	.
REVISION	.	.	.

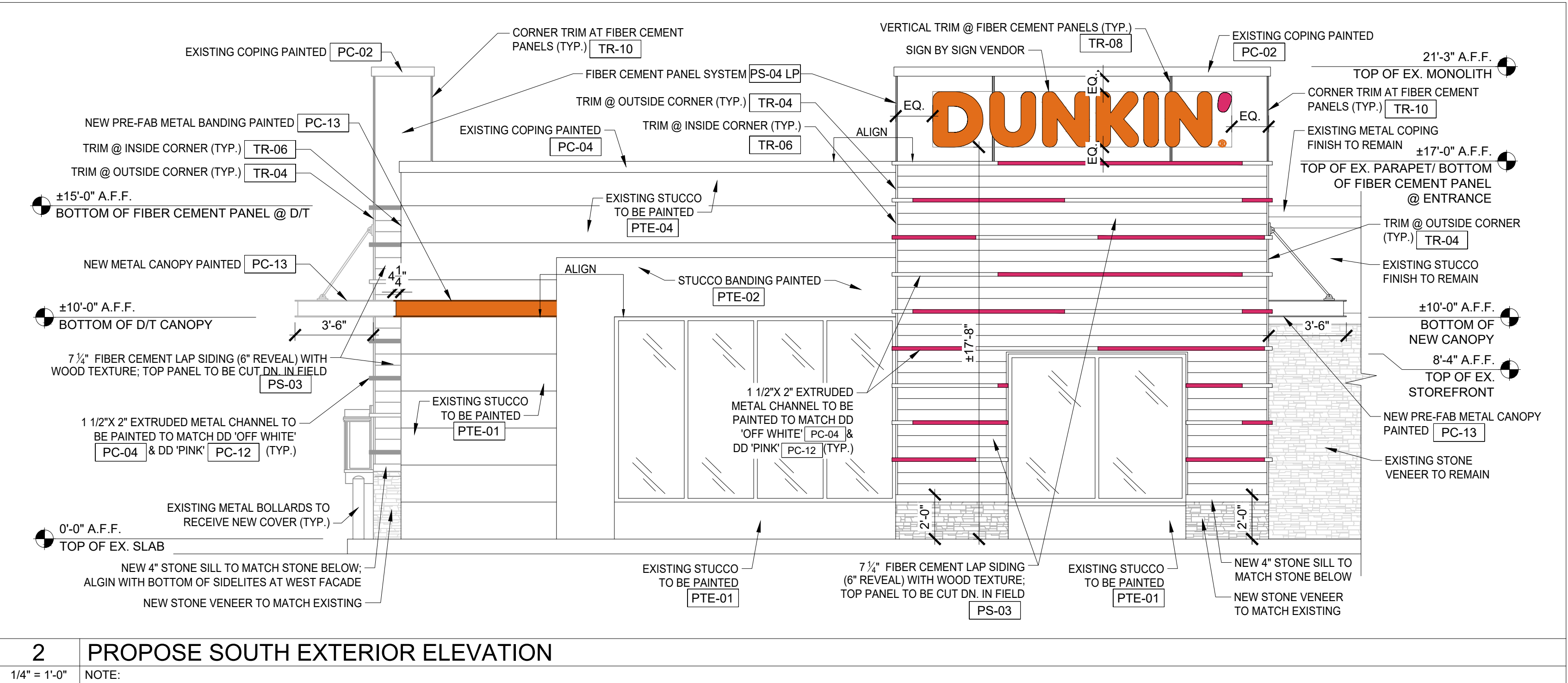
EXISTING  
EXTERIOR ELEVATIONS  
DUNKIN'  
950 MAIN AVE. A  
DE PERE, WI 54115  
PC # 352721

SHEET  
A-1.0

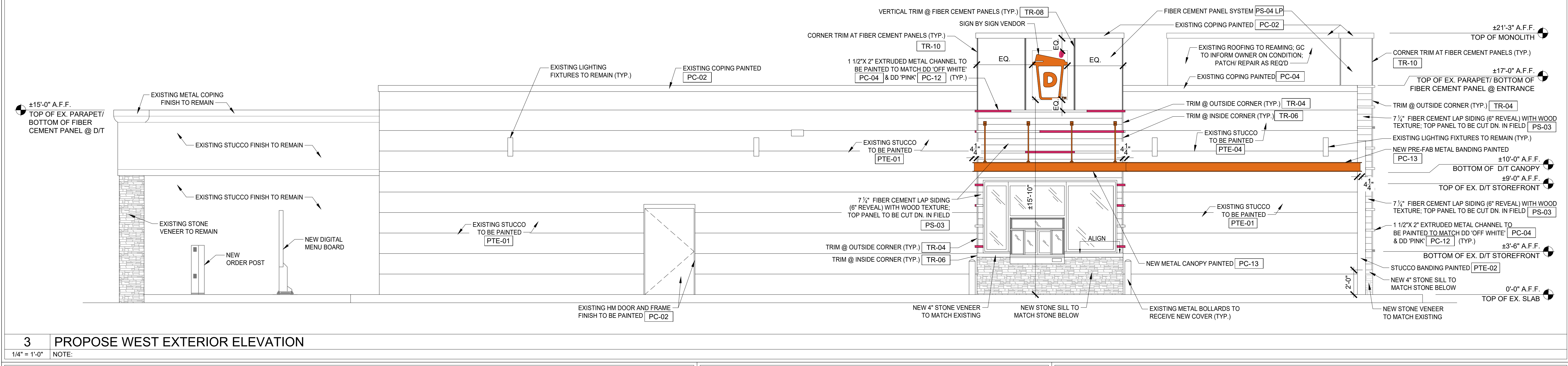




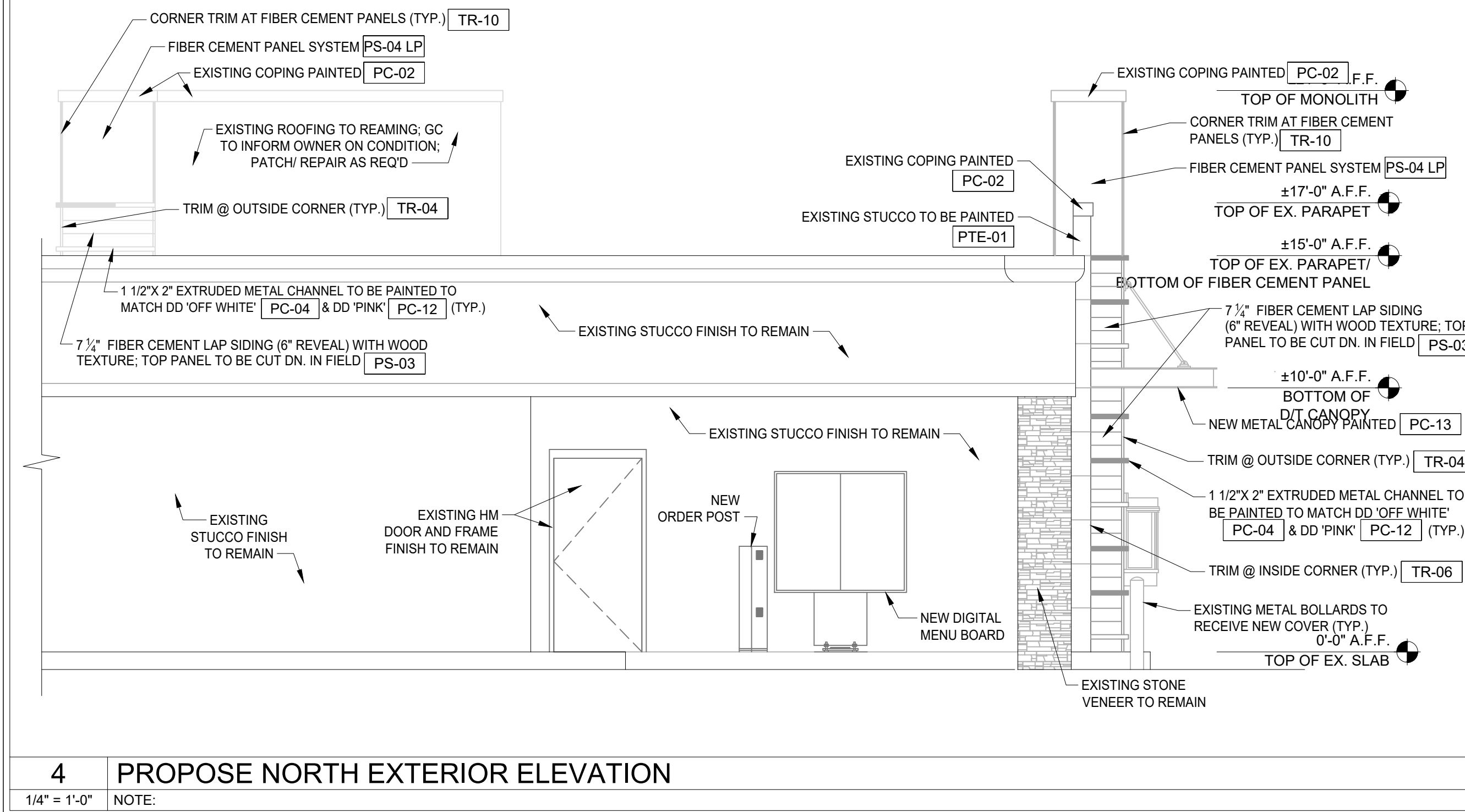
1 PROPOSE EAST EXTERIOR ELEVATION  
1/4" = 1'-0" NOTE:



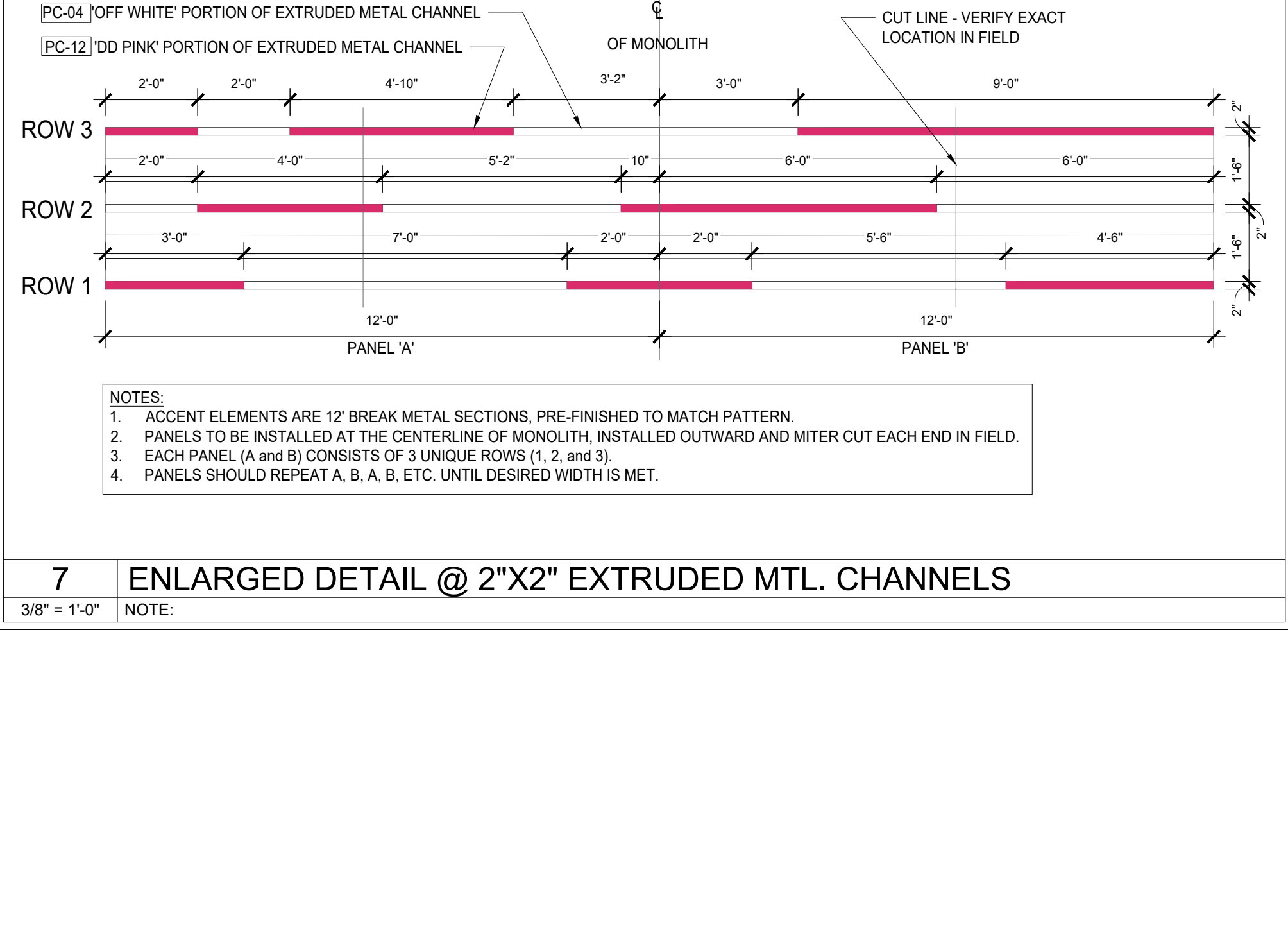
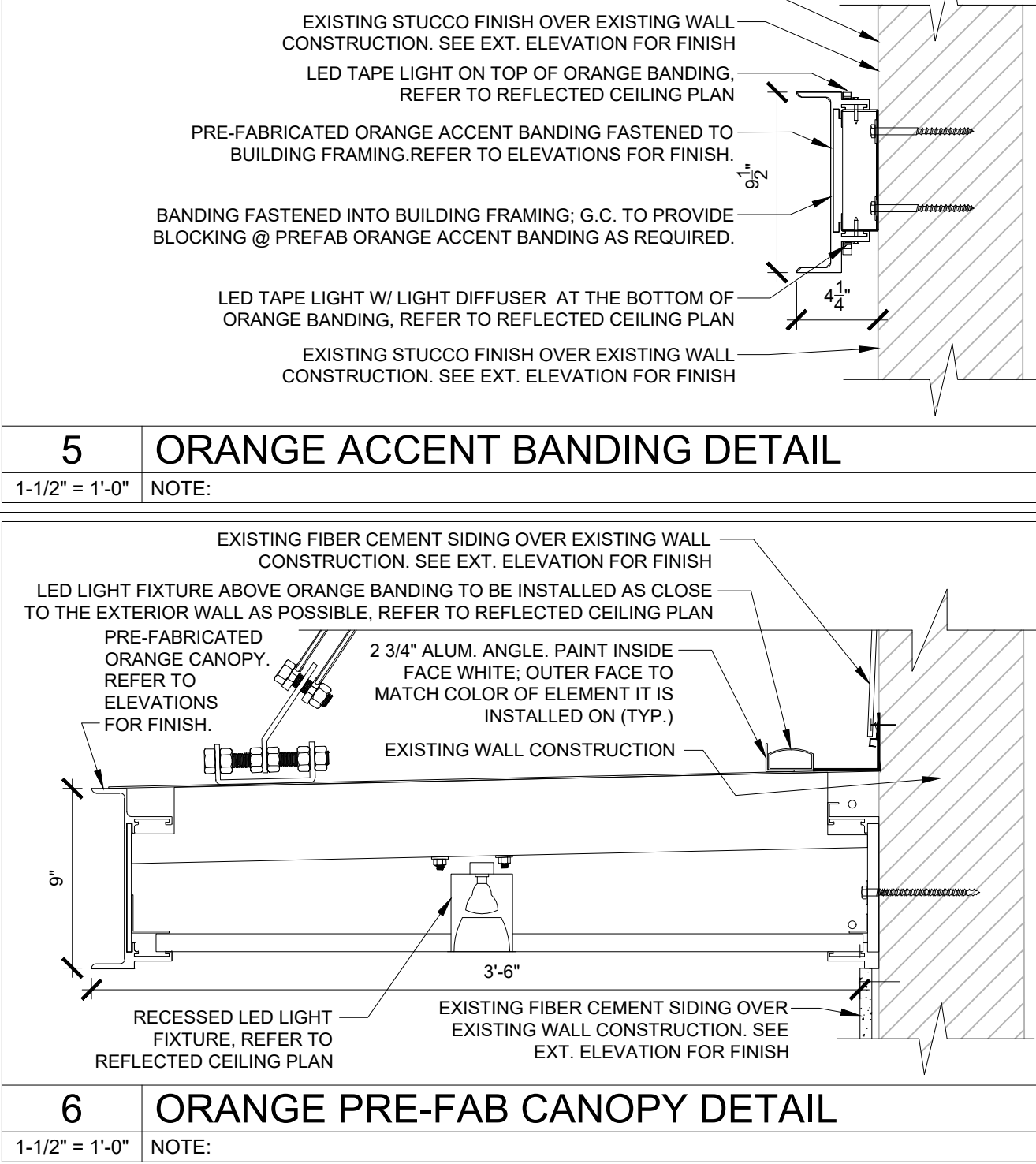
2 PROPOSE SOUTH EXTERIOR ELEVATION  
1/4" = 1'-0" NOTE:



3 PROPOSE WEST EXTERIOR ELEVATION  
1/4" = 1'-0" NOTE:



4 PROPOSE NORTH EXTERIOR ELEVATION  
1/4" = 1'-0" NOTE:



7 ENLARGED DETAIL @ 2"X2" EXTRUDED MTL. CHANNELS  
3/8" = 1'-0" NOTE:

**DUNKIN'**

**MRV**  
ARCHITECTS, INC.

5105 TOLLVIEW DR., SUITE 201  
ROLLING MEADOWS, IL 60008

ALL DRAWINGS, SPECIFICATIONS AND PLANS ARE INSTRUMENTS OF SERVICE. THEREFORE ARE PROPERTY OF MRV ARCHITECTS, INC. THEY MAY NOT BE REUSED, COPIED OR REPRODUCED WITHOUT PERMISSION AND EXPRESS WRITTEN CONSENT OF MRV ARCHITECTS

EV	MV	08-15-24	24042
DRAWN	CHECKED	DATE	PROJECT NO
1	1	10/24	1

REVISION	DESCRIPTION	DATE	BY	APP
1	SITE PLAN REVIEW	10/24		

PRELIMINARY  
EXTERIOR ELEVATIONS

DUNKIN'  
950 MAIN AVE. A  
DE PERE, WI 54115

PC # 352721

SHEET

**A-1.1**