

# PRESS RELEASE

For Immediate Release: Oct. 5, 2022

City of De Pere  
335 South Broadway  
De Pere, WI 54115-1199  
[www.deperewi.gov](http://www.deperewi.gov)



## Road closure: Major traffic impacts on Main Avenue (STH 32) in De Pere on Oct. 11 and 12

**DE PERE, WIS.** – Main Avenue (STH 32) will be closed to all traffic between Eighth Street and Fort Howard Avenue on Tuesday, Oct. 11 and Wednesday, Oct. 12. The closure is occurring for an emergency repair to the Canadian National Railroad Bridge that was damaged in an accident. The closure will result in significant travel impacts in the area. The recommended detour for the project will be as follows:

### Westbound Traffic:

Main Avenue (STH 32) to Fifth Street (CTH EE). Fifth Street (CTH EE) to Grant Street (CTH EE). Grant Street (CTH EE) to Lawrence Drive. Lawrence Drive to Main Avenue (STH 32).

### Eastbound Traffic:

#### 1) Recommended Detours:

- a. Traffic from US41: Main Avenue (STH 32) to Lawrence Drive. Lawrence Drive to Grant Street (CTH EE). Grant Street (CTH EE) to Fifth Street (CTH EE). Fifth Street (CTH EE) to Reid Street (STH 32).
- b. Traffic from Ashland Avenue (STH 32): N. Eighth Street (STH 32) to Main Avenue (STH 32). Main Avenue (STH 32) to Lawrence Drive. Lawrence Drive to Grant Street (CTH EE). Grant Street (CTH EE) to Fifth Street (CTH EE). Fifth Street (CTH EE) to Reid Street (STH 32).

- 2) Secondary Detours: Main Avenue (STH 32) to N. Eighth Street (STH 32). N. Eighth Street (STH 32) to Ashland Avenue (STH 32). Ashland Avenue (STH 32) to Parkview Street. Parkview Street to Fort Howard Avenue. Fort Howard Avenue to Main Avenue/Reid Street (STH 32).

### Notes:

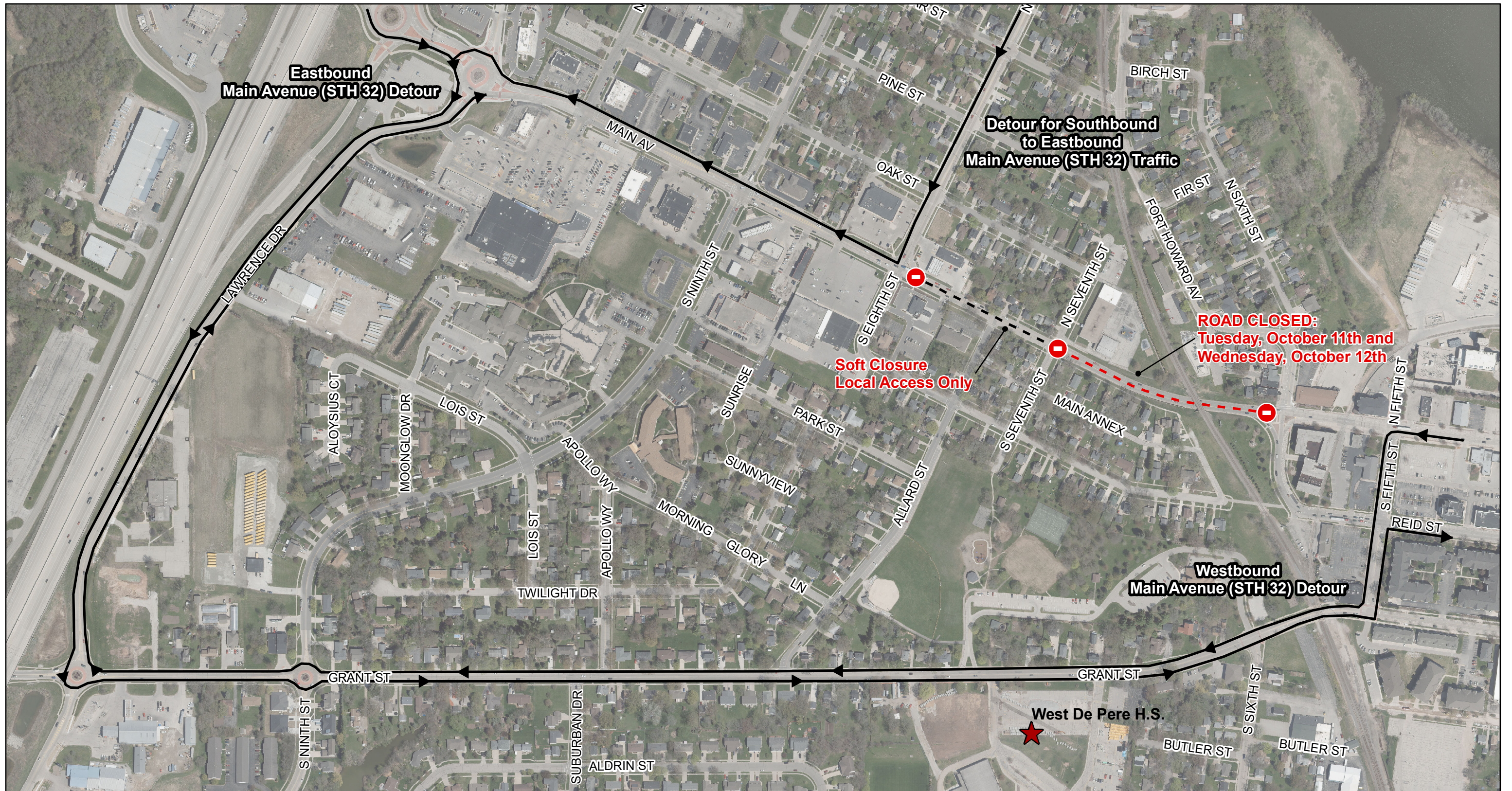
- 1) The secondary detour for eastbound traffic includes a railroad crossing at Parkview Road where Parkview Road is at a stop for Fort Howard Avenue. There is very little storage room for vehicles at this location. Do not block the railroad tracks.
- 2) Grant Street (CTH EE) will be particularly congested between 7 and 8 am with West De Pere School District students and staff accessing the high school.

- 3) The control at the intersection of Grant Street (CTH EE) and Fifth Street (CTH EE) will be modified during these two days to accommodate the additional traffic.
- 4) The signals at Reid Street (STH 32) and Fifth Street (CTH EE) will be modified to accommodate the traffic during these two days.

For updates, please follow City of De Pere social media platforms or visit [www.deperewi.gov](http://www.deperewi.gov).

###





# **Exhibit A:** **East and Westbound Traffic Detour for Main Avenue (STH 32)**

1 inch = 375 feet



This map was produced utilizing a variety of sources the City of De Pere reasonably believes are reliable, including GIS data, some of which was under development at the time this map was produced. The City of De Pere makes no warranty, either expressed or implied, including no warranty as to fitness for a particular use, of the information contained in or comprising, this map.



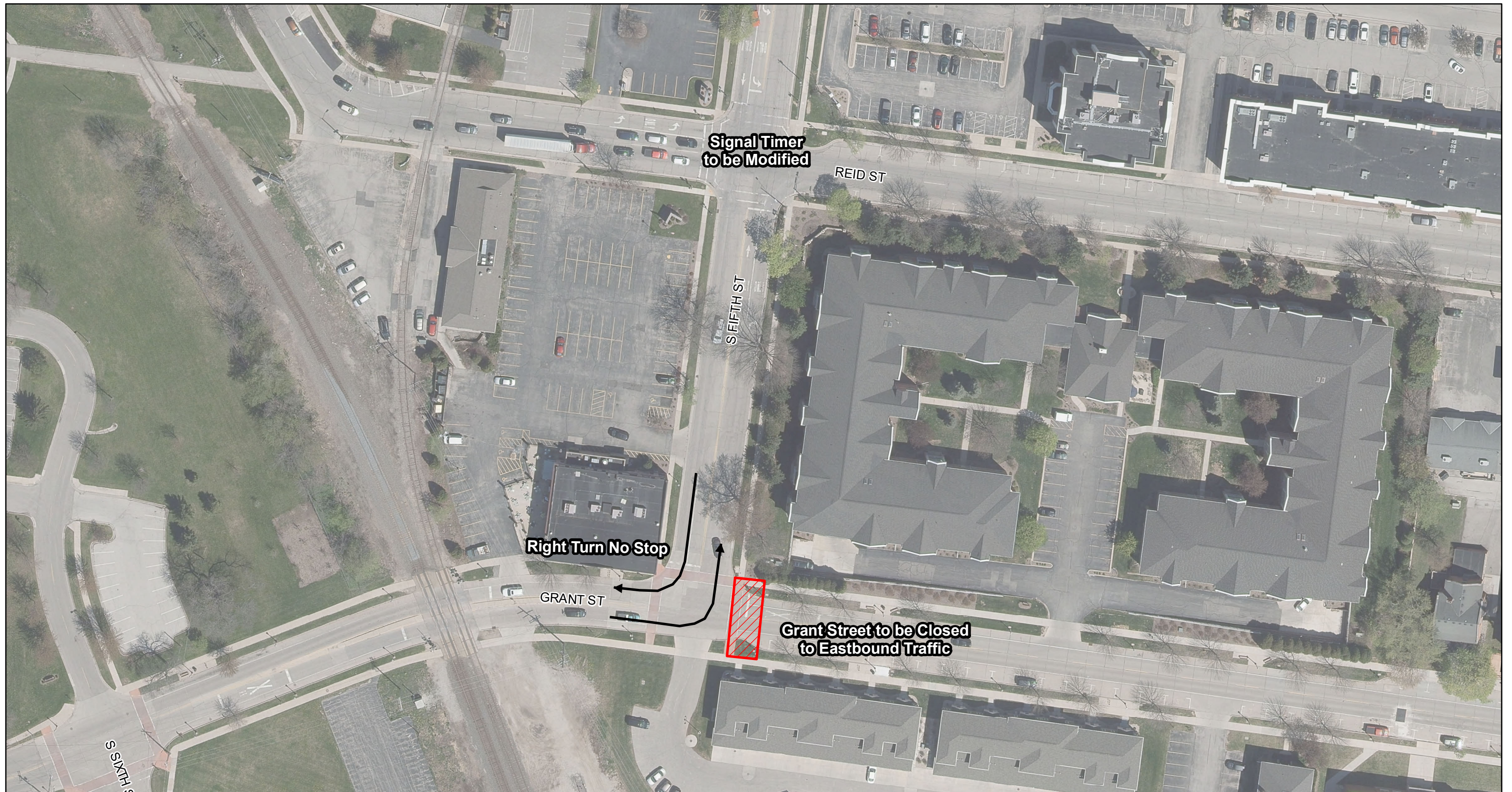


## Exhibit B: Secondary Detour for Main Avenue (STH 32)

1 inch = 450 feet

This map was produced utilizing a variety of sources the City of De Pere reasonably believes are reliable, including GIS data, some of which was under development at the time this map was produced. The City of De Pere makes no warranty, either expressed or implied, including no warranty as to fitness for a particular use, of the information contained in or comprising, this map.





## Exhibit C: Grant Street and Reid Street at Fifth Street

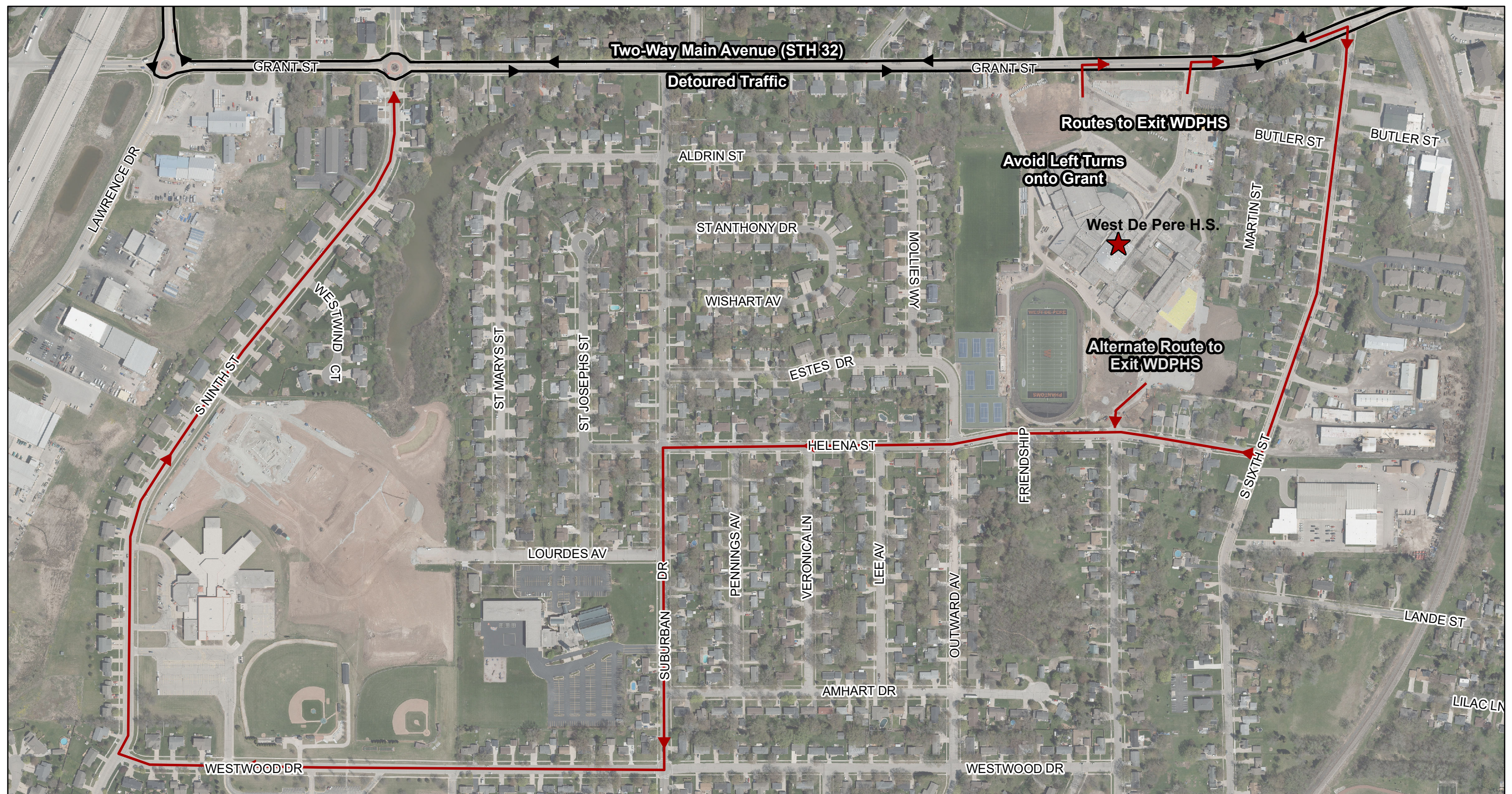
1 inch = 75 feet

N



This map was produced utilizing a variety of sources the City of De Pere reasonably believes are reliable, including GIS data, some of which was under development at the time this map was produced. The City of De Pere makes no warranty, either expressed or implied, including no warranty as to fitness for a particular use, of the information contained in or comprising, this map.





## Exhibit D: WDPHS Alternate Route

1 inch = 375 feet



This map was produced utilizing a variety of sources the City of De Pere reasonably believes are reliable, including GIS data, some of which was under development at the time this map was produced. The City of De Pere makes no warranty, either expressed or implied, including no warranty as to fitness for a particular use, of the information contained in or comprising, this map.