

# CITY OF DE PERE

## Engineering Division

925 S. Sixth Street, De Pere, WI | 920-339-4061 | [www.deperewi.gov/engineering](http://www.deperewi.gov/engineering)



February 23, 2022

ADDENDUM NO. 1  
PROJECT 22-20  
AMERICAN BOULEVARD AND COMMERCE DRIVE CONCRETE PAVING

TO: Prospective Bidders

FROM: City of De Pere

Notice is hereby given that the contract documents for the Project 22-20 are amended as hereinafter set forth. If you will be submitting a bid for Project 22-20, you must sign this addendum and include it with your submittal.

This addendum consists of 9 pages.

CHANGES TO PROJECT BID DOCUMENTS:

1. Section 00 41 43, Bid Schedule
  - a. Delete Section 00 41 43, Bid Schedule in its entirety and insert 00 41 43R, Bid Schedule.
  - b. Bid item SD-02, Provide Borrow Material and Placement adjacent to Curb has been increased from 10,400 LF to 11,200 LF.

CHANGES TO GENERAL REQUIREMENTS:

1. Section 01 22 04, Measurement and Payment Street and Drainage Construction
  - a. Under Section 1.8 Portland Cement Concrete Driveway and Sidewalk, A., insert the following:  
"15. Providing and placing topsoil adjacent to sidewalk on Garroman, including seed and mulch."

CHANGES TO PLANS:

1. Delete Sheet C417 and insert Sheet C417R. The construction drums have been eliminated from Commerce Drive. Drums are not required because Commerce Drive will be closed to traffic. The contractor will be responsible to protect concrete during construction.

2. Delete Sheet C419 and insert Sheet C419R. The construction drums have been eliminated from Commerce Drive.

Sincerely,

DEPARTMENT OF PUBLIC WORKS



Eric P. Rakers, P.E.  
City Engineer



Acknowledged by: \_\_\_\_\_ Date: \_\_\_\_\_

SECTION 00 41 43

CITY OF DE PERE

PROJECT 22-20

BID SCHEDULE – UNIT PRICE

ITEM	ITEM DESCRIPTION	UNIT	QUANTITY	UNIT PRICE	AMOUNT BID
<b>STORM SEWER</b>					
ST-01	Provide Type B Inlet Casting	EA	1	\$ _____	\$ _____
ST-02	Provide Type A Field Inlet Casting	EA	1	\$ _____	\$ _____
<b>STREET AND DRAINAGE</b>					
SD-01	Unclassified Excavation, Pavement Removal, and Borrow Placement Commerce Cul de Sac	LS	1	\$ _____	\$ _____
SD-02	Provide Borrow Material and Placement adjacent to Curb	LF	11,200	\$ _____	\$ _____
SD-03	Provide 1 1/4" Crushed Aggregate Base Course	TON	850	\$ _____	\$ _____
SD-04	Provide 3/4" Crushed Aggregate Base Course	TON	150	\$ _____	\$ _____
SD-05	Provide 24" Concrete Curb and Gutter	LF	1,000	\$ _____	\$ _____
SD-06	Provide 9" Doweled Concrete Pavement with Integral Curb	SY	22,850	\$ _____	\$ _____
SD-07	Remove Concrete and/or Asphalt and Replace with 9" Concrete Pavement with Integral Curb (American Boulevard Patch)	SY	250	\$ _____	\$ _____
SD-08	Remove Replace with 9" Concrete Pavement with Integral Curb (Commerce Drive Patch)	SY	100	\$ _____	\$ _____

**Project 22-20**  
**American Boulevard and Commerce Drive Concrete Paving**

**City of De Pere**

ITEM	ITEM DESCRIPTION	UNIT	QUANTITY	UNIT PRICE	AMOUNT BID
<b>STREET AND DRAINAGE CONTINUED</b>					
SD-09	Provide Raised and Corrugated Concrete Median	SY	230	\$ _____	\$ _____
SD-10	Provide 24" Integral Curb and Gutter	LF	10,200	\$ _____	\$ _____
SD-11	Provide 4" Concrete Sidewalk, Ramp, and Driveway	SY	590	\$ _____	\$ _____
SD-12	Provide 6" Concrete Sidewalk, Ramp, and Driveway	SY	20	\$ _____	\$ _____
SD-13	Provide 8" Concrete Sidewalk, Ramp, and Driveway	SY	200	\$ _____	\$ _____
SD-14	Provide #4 Reinforcement Bars for Curb and Sidewalk	LF	160	\$ _____	\$ _____
SD-15	Drilled Tie Bars (Existing Sidewalk, Driveway, and Curb and Gutter)	EA	12	\$ _____	\$ _____
SD-16	Drilled Dowel Bars	EA	100	\$ _____	\$ _____
SD-17	Drilled Tie Bars (Concrete Pavement)	EA	50	\$ _____	\$ _____
SD-18	Pavement Marking Stop Line Epoxy 12-Inch (Yellow)	LF	90	\$ _____	\$ _____
SD-19	Pavement Marking Epoxy 8-Inch (White)	LF	120	\$ _____	\$ _____
SD-20	Pavement Marking Epoxy 4-Inch (Yellow)	LF	6,760	\$ _____	\$ _____
SD-21	Pavement Marking Epoxy 4-Inch (Double Yellow)	LF	310	\$ _____	\$ _____
SD-22	Pavement Marking Epoxy 4-Inch (White)	LF	5,960	\$ _____	\$ _____
SD-23	Pavement Marking Epoxy Corrugated Median (Yellow)	SY	90	\$ _____	\$ _____
SD-24	Pavement Marking Epoxy Island Nose (Yellow)	EA	2	\$ _____	\$ _____



**Project 22-20**  
**American Boulevard and Commerce Drive Concrete Paving**

**City of De Pere**

ITEM	ITEM DESCRIPTION	UNIT	QUANTITY	UNIT PRICE	AMOUNT BID
<b>STREET AND DRAINAGE CONTINUED</b>					
SD-25	Pavement Marking Arrows Epoxy Type-2 (White)	EA	13	\$ _____	\$ _____
SD-26	Pavement Marking Arrows Epoxy Type-5 Lane Drop (White)	EA	2	\$ _____	\$ _____
SD-27	Pavement Marking Epoxy Bike Lane Arrow (White)	EA	9	\$ _____	\$ _____
SD-28	Pavement Marking Epoxy Bike Lane Symbol (White)	EA	9	\$ _____	\$ _____
SD-29	Pavement Marking Epoxy Bike Lane Words (White)	EA	1	\$ _____	\$ _____
SD-30	Provide Detectable Warning Field (Natural)	EA	2	\$ _____	\$ _____
SD-31	Landscaping-Topsoil, Seed, Fertilizer and Mulch	SY	4,700	\$ _____	\$ _____
<b>SPECIAL CONSTRUCTION</b>					
SC-01	Inlet Protection Type D	EA	40	\$ _____	\$ _____
SC-02	Adjust Inlet	EA	31	\$ _____	\$ _____
SC-03	Adjust Field inlet	EA	1	\$ _____	\$ _____
SC-04	Provide End of Roadway Marker (W5-56)	EA	3	\$ _____	\$ _____
SC-05	Provide "STOP" Sign (R1-1)	EA	2	\$ _____	\$ _____
SC-06	Provide Right Reverse Curve Arrow Symbol Sign (W1-4R)	EA	2	\$ _____	\$ _____
SC-07	Provide "25 MPH" Advisory Speed Sign (W13-1)	EA	2	\$ _____	\$ _____
SC-08	Provide Median Ahead with Two Way Arrows Symbol Sign (W6-1)	EA	1	\$ _____	\$ _____
SC-09	Provide Median Behind with Two Way Arrows Symbol Sign (W6-2)	EA	1	\$ _____	\$ _____

**Project 22-20**  
**American Boulevard and Commerce Drive Concrete Paving**

**City of De Pere**

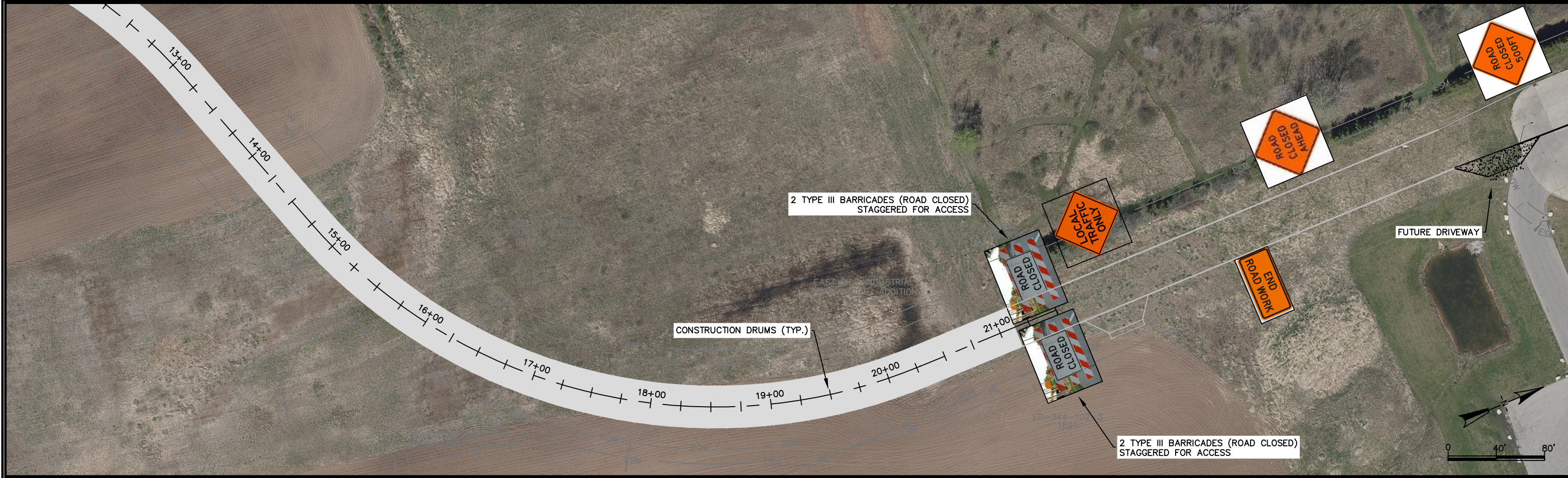
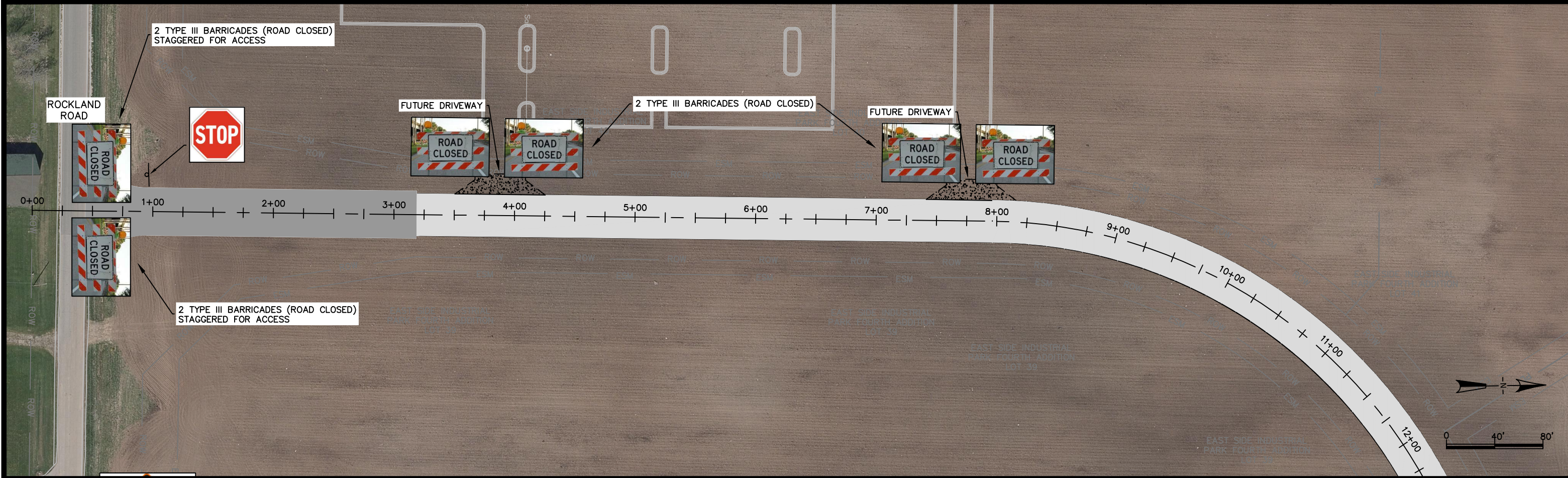
ITEM	ITEM DESCRIPTION	UNIT	QUANTITY	UNIT PRICE	AMOUNT BID
<b>SPECIAL CONSTRUCTION CONTINUED</b>					
SC-10	Provide "DO NOT ENTER" Sign (R5-1)	EA	1	\$ _____	\$ _____
SC-11	Provide "WRONG WAY" Sign (R5-1A)	EA	1	\$ _____	\$ _____
SC-12	Provide Median on Left Symbol Sign (R4-7)	EA	1	\$ _____	\$ _____
SC-13	Provide "LANE ENDS MERGE LEFT" Sign (W9-2L)	EA	1	\$ _____	\$ _____
SC-14	Provide Merge Left Symbol Sign (W4-2R)	EA	1	\$ _____	\$ _____
SC-15	Traffic Control - American Boulevard Patch	LS	1	\$ _____	\$ _____
SC-16	Traffic Control - American Boulevard Paving	LS	1	\$ _____	\$ _____
SC-17	Traffic Control - Commerce Drive Paving	LS	1	\$ _____	\$ _____
<b>ELECTRICAL</b>					
E-01	Conduit Rigid Nonmetallic Schedule 40, 2-Inch	LF	5,850	\$ _____	\$ _____
E-02	Conduit Bored, 2-Inch	LF	360	\$ _____	\$ _____
E-03	Pull Box 24x42 Inch	EA	8	\$ _____	\$ _____
E-04	Concrete Base, Type 5	EA	22	\$ _____	\$ _____
E-05	Poles, Type 5-Aluminum Anodized Black	EA	22	\$ _____	\$ _____
E-06	Transformer Base Breakaway 11 1/2 Bolt Circle, Anodized Black with Factory Applied Black Finish	EA	22	\$ _____	\$ _____
E-07	Luminaire Arms Single Member Mast Arm 4-1/2 Inch Clamp, 8-foot, Anodized Black	EA	10	\$ _____	\$ _____

**Project 22-20**  
**American Boulevard and Commerce Drive Concrete Paving**

**City of De Pere**

ITEM	ITEM DESCRIPTION	UNIT	QUANTITY	UNIT PRICE	AMOUNT BID
<b>ELECTRICAL CONTINUED</b>					
E-08	Luminaire Arms Single Member Truss Type Arm 4-1/2 Inch Clamp, 12-foot, Anodized Black	EA	12	\$ _____	\$ _____
E-09	Concrete Control Cabinet Base, Type L24	EA	2	\$ _____	\$ _____
E-10	Lighting Control Cabinet, 120/240 24-inch	EA	2	\$ _____	\$ _____
E-11	Electrical Service Meter Breaker Pedestal	EA	2	\$ _____	\$ _____
E-12	Electrical Wire Lighting 12 AWG	LF	1,080	\$ _____	\$ _____
E-13	Electrical Wire Lighting 4 AWG	LF	25,100	\$ _____	\$ _____
E-14	Luminaires Utility LED	EA	22	\$ _____	\$ _____
E-15	Remove Existing Light Pole (Salvage to City) and Base	EA	1	\$ _____	\$ _____
<b>TOTAL AMOUNT BID:</b>					\$ _____









**CITY OF DE PERE**

ENGINEERING DIVISION 925 S. SIXTH ST DE PERE WI 54115  
OFFICE 920-339-4061 FAX 920-339-4071

**ROCKLAND ROAD  
TRAFFIC CONTROL &  
PERMANENT SIGNING PLAN**

NAME: AMERICAN BLVD AND  
COMMERCE DR  
CONCRETE PAVING  
PROJECT # 22-20

NO.	DATE	BY	DATE
1	02-2022	MAL	12-2021
		MJT	12-2021
		EPR	02-2022

REVISIONS / ISSUES			
NO.	DATE	BY	REMARKS
1	02-2022	MAL	REMOVED CONSTRUCTION DRUMS